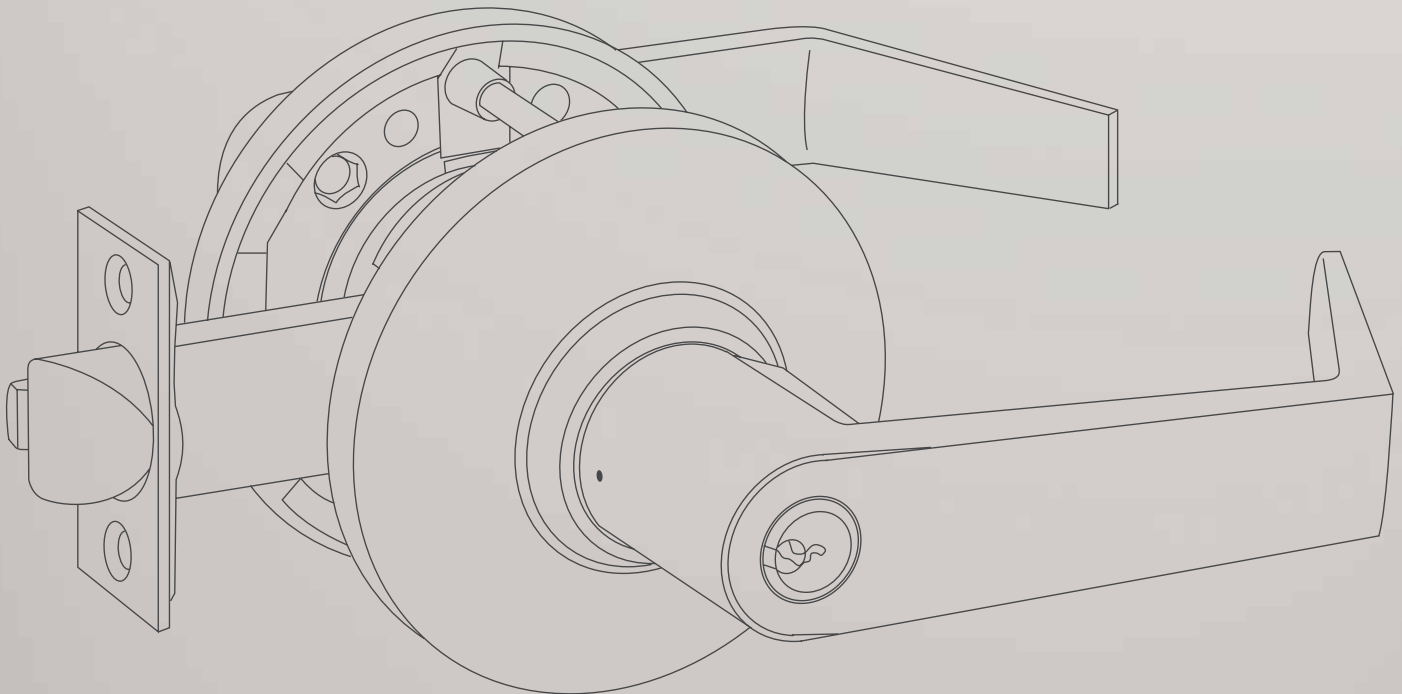


CLX3300 SERIES

Cylindrical Lockset Parts Manual



 **WARNING**

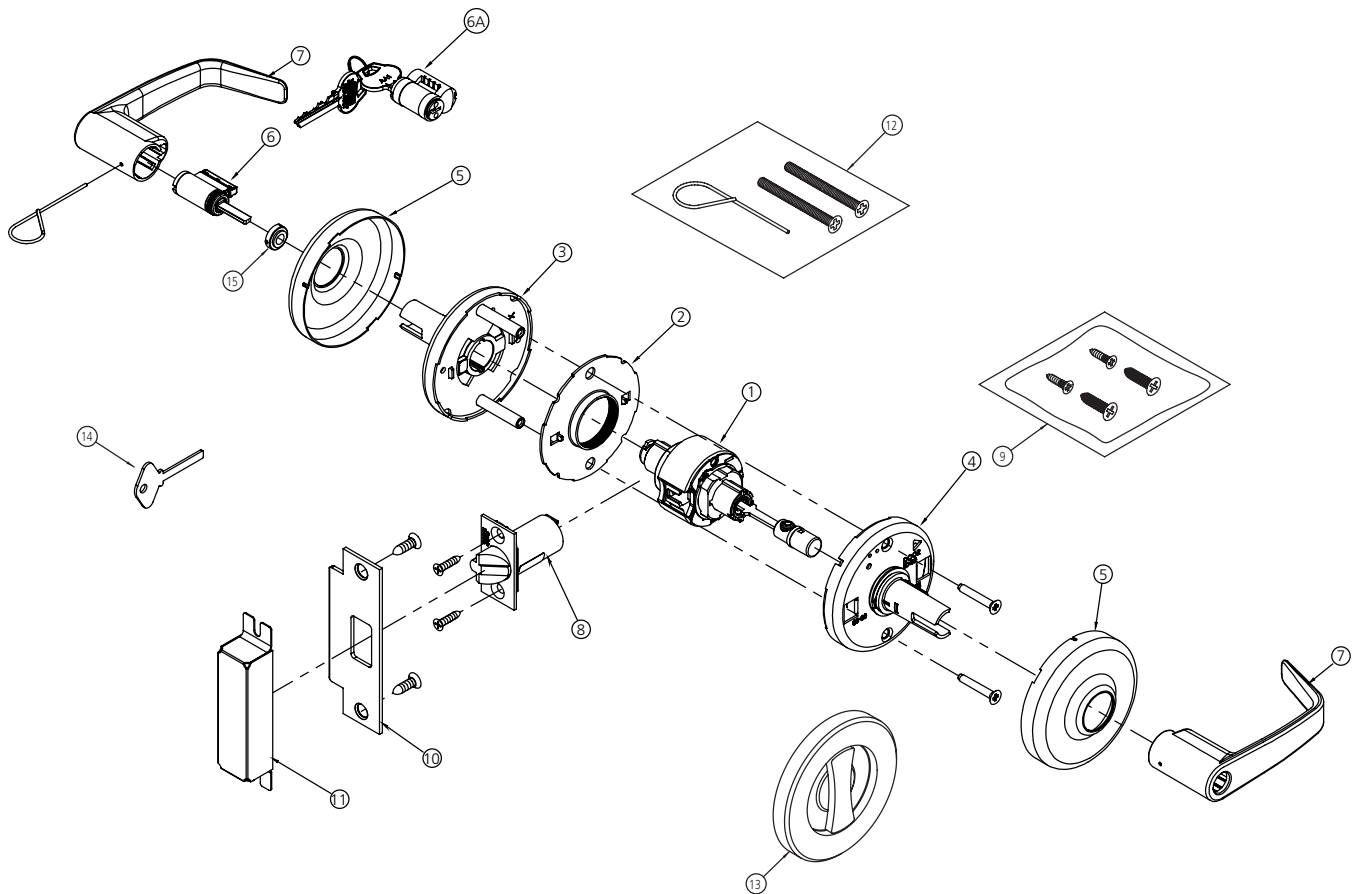
This product can expose you to lead which is known to the state of California to cause cancer and birth defects or other reproductive harm. For more information go to www.P65warnings.ca.gov.

Experience a safer
and more open world

Exploded View.....	3
Lockbodies & Buttons	4
Spring Housing Assemblies	5
Roses/Liners and Misc	6
Screw Packs	7
Latches	8
Strikes.....	9
Cylinders.....	10-13
Standard Levers	14-15
Indicator Lever Assemblies	16-17
How to Order Parts.....	18
Finishes.....	18

The warranty on Corbin Russwin products becomes void if the product is modified in any way, regardless of whether the modifications causes or contributes to any alleged defect. If a Corbin Russwin product is modified it may no longer meet industry certification and quality control standards applicable to the original product and is no longer a genuine Corbin Russwin product.

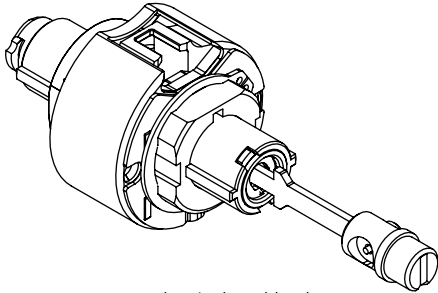
Copyright © 2021-2025, ASSA ABLOY Access and Egress Hardware Group, Inc. All rights reserved. Reproduction in whole or in part without the express written permission of ASSA ABLOY Access and Egress Hardware Group, Inc. is prohibited. Patent pending and/or patent www.assaabloydss.com/patents.



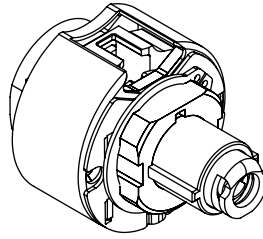
Item	Description	Page #
1	Lockbody	4
2	Rose Liner/Mounting Plate	6
3	Spring Housing Assembly, Outside	5
4	Spring Housing Assembly, Inside	5
5	Rose	6
6	Cylinder	10
6A	Core	11
7	Lever	14
8	Latch	8
9	Screw pack	7
10	Strike	9
11	Strike Box	9
12	Thru Bolt Mounting Pack	7
13	Thumbturn Assembly (CLX3390 only)	5
14	Emergency Release Tool (CLX3320 only)	6
15	Cylinder Spacer	13

The warranty on Corbin Russwin products becomes void if the product is modified in any way, regardless of whether the modifications causes or contributes to any alleged defect. If a Corbin Russwin product is modified it may no longer meet industry certification and quality control standards applicable to the original product and is no longer a genuine Corbin Russwin product.

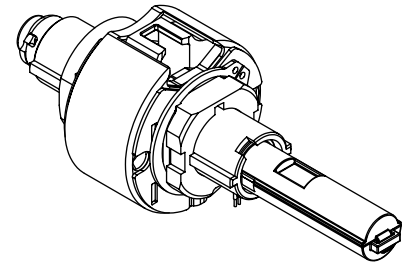
Copyright © 2021-2025, ASSA ABLOY Access and Egress Hardware Group, Inc. All rights reserved. Reproduction in whole or in part without the express written permission of ASSA ABLOY Access and Egress Hardware Group, Inc. is prohibited. Patent pending and/or patent www.assaabloydss.com/patents.



Mechanical Lockbody



Half Trim Lockbody
(e.g. CLX3380, CLX3381, CLX3383 CLX3390)



Electrified Lockbody

Mechanical Lockbodies 1-3/8" - 2-1/4" Door (does not include rose liner/mounting plate)

Description	Function	Part Number			
		Std/Freewheeling	Std/Freewheeling (VSL only**)	Rigid Lever	Rigid Lever (VSL only**)
Passage or Closet	CLX3310	861F708	N/A	N/A	N/A
Privacy, Bedroom or Bathroom	CLX3320	861F748 Fin*	892F780 Fin*	861F758 Fin*	892F790 Fin*
Hospital Privacy	CLX3320H	861F748 Fin*	892F780 Fin*	861F758 Fin*	892F790 Fin*
Time Out Lock	CLX3320TO	861F728 Fin*	N/A	861F738 Fin*	N/A
Hotel or Motel	CLX3329	861F768 Fin*	N/A	861F778 Fin*	N/A
Privacy, Bedroom or Bathroom	CLX3330	861F748 Fin*	892F780 Fin*	861F758 Fin*	892F790 Fin*
Institutional or Utility	CLX3332	861F968	N/A	861F978	N/A
Patio or Privacy	CLX3340	861F748 Fin*	892F780 Fin*	861F758 Fin*	892F790 Fin*
Exit Latch	CLX3340NT	861F358	N/A	861F368	N/A
Keyed Privacy Indicator	CLX3349	N/A	892F840 Fin*	N/A	N/A
Entrance or Office	CLX3351	861F828 Fin*	892F820 Fin*	861F838 Fin*	892F830 Fin*
Classroom Intruder	CLX3352	861F848	898F720	861F858	898F730
Classroom	CLX3355	861F848	898F680	861F858	898F700
Storeroom or Closet	CLX3357	861F358	892F820	861F368	892F830
Barrier Free Storeroom or Public Restroom	CLX3359	861F868	N/A	861F878	N/A
Entry or Office	CLX3361	861F788 Fin*	892F840 Fin*	861F798 Fin*	892F850 Fin*
Communicating	CLX3362	861F988	N/A	861F998	N/A
Apartment, Exit or Public Toilet	CLX3372	862F008	N/A	862F018	N/A
Corridor/Dormitory Lock	CLX3375	861F888 Fin*	892F860 Fin*	861F898 Fin*	892F870 Fin*
Corridor/Dormitory Lock (modified)	CLX3376	861F908 Fin*	898F670 Fin*	861F918 Fin*	898F660 Fin*
Passage Lever x Blank Plate	CLX3380	861F718	N/A	N/A	N/A
Classroom x Blank Plate	CLX3381	861F928	N/A	861F938	N/A
Store Door Lock	CLX3382	862F028	N/A	862F038	N/A
Storeroom x Blank Plate	CLX3383	861F948	N/A	861F958	N/A
Passage Lever x Turnpiece	CLX3390	861F718	N/A	N/A	N/A
Service Station	CLX3393	900F038 Fin*	899F250 Fin*	900F048 Fin*	899F490 Fin*

*Includes finished button. Specify finish.

**Lockbody used with VSL trim only.

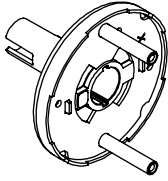
Note: If ordering replacement lockbodies for 2-3/8" (B238) units shipped prior to October 1, 2024, existing latchbolts will not be compatible. See page 8 for latchbolts.

Electrified Lockbodies 1-3/8" - 2-1/4" Door (includes lock harness)

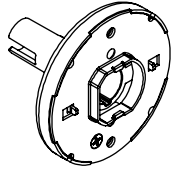
Description	Function	Part Number	
		Std/Freewheeling	Rigid Lever
Electromechanical	CLX33903	886F000	886F010
	CLX33905		

The warranty on Corbin Russwin products becomes void if the product is modified in any way, regardless of whether the modifications causes or contributes to any alleged defect. If a Corbin Russwin product is modified it may no longer meet industry certification and quality control standards applicable to the original product and is no longer a genuine Corbin Russwin product.

Copyright © 2021-2025, ASSA ABLOY Access and Egress Hardware Group, Inc. All rights reserved. Reproduction in whole or in part without the express written permission of ASSA ABLOY Access and Egress Hardware Group, Inc. is prohibited. Patent pending and/or patent www.assaabloydss.com/patents.



Part No. 860F608
Spring Housing Assembly, Outside



Part No. 860F618
Spring Housing Assembly, Inside

Outside Spring Housing Assemblies (1-3/8" - 2-1/4" Door)

Part #	Description
860F608	All Functions except CLX3380, CLX3381, CLX3383, CLX3350, CLX3370, and VSL Trim
892F880	All Functions with VSL Trim
860F638	All Functions for ASSA ABLOY ACCENTRA® LFIC except with VSL Trim
892F890	All Functions with VSL Trim for ASSA ABLOY ACCENTRA® LFIC

Inside Spring Housing Assemblies (1-3/8" - 2" Door)

Part #	Description
860F618	All Functions except CLX3332, CLX3352, CLX3362, CLX3372, CLX3381, CLX3382, CLX3383, CLX3390, CLX3350, CLX3370
860F628	Functions CLX3332, CLX3352, CLX3362, CLX3372, CLX3381, CLX3382, CLX3383 (not for CLX3352 with VSL Trim)
899F520	CLX3352 Function with VSL Trim
860F648	Functions CLX3332, CLX3352, CLX3362, CLX3372, CLX3381, CLX3382, CLX3383 for ASSA ABLOY ACCENTRA® LFIC (not for CLX3352 with VSL Trim)
899F570	CLX3352 Function with VSL for ASSA ABLOY ACCENTRA® LFIC
885F860	Mechanical and EM functions with Request to Exit Option (M92)

Inside Spring Housing Assemblies (2-1/4" Door)

Part #	Description
889F690	All Functions except CLX3332, CLX3352, CLX3362, CLX3372, CLX3381, CLX3382, CLX3383, CLX3390, CLX3350, CLX3370
889F700	Functions CLX3332, CLX3352, CLX3362, CLX3372, CLX3381, CLX3382, CLX3383 (not for CLX3352 with VSL Trim)
899F580	CLX3352 Function with VSL Trim
889F710	Functions CLX3332, CLX3352, CLX3362, CLX3372, CLX3381, CLX3382, CLX3383 for ASSA ABLOY ACCENTRA® LFIC (not for CLX3352 with VSL Trim)
899F590	CLX3352 Function with VSL for ASSA ABLOY ACCENTRA® LFIC
885F870	Mechanical and EM functions with Request to Exit Option (M92)

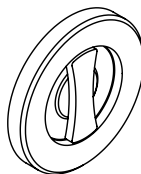
Dummy Spring Housing Assemblies

Part #	Description
863F108	Outside CLX3350, CLX3370
863F118	Inside CLX3370

Thumbturn Assembly (CLX3390)

Part #	Description
865F32 x Fin*	1-3/4"-2" door thickness
865F33 x Fin*	2-1/4" door thickness

* Specify Finish

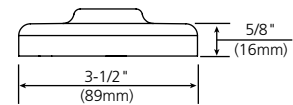


The warranty on Corbin Russwin products becomes void if the product is modified in any way, regardless of whether the modifications causes or contributes to any alleged defect. If a Corbin Russwin product is modified it may no longer meet industry certification and quality control standards applicable to the original product and is no longer a genuine Corbin Russwin product.

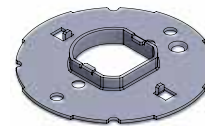
Copyright © 2021-2025, ASSA ABLOY Access and Egress Hardware Group, Inc. All rights reserved. Reproduction in whole or in part without the express written permission of ASSA ABLOY Access and Egress Hardware Group, Inc. is prohibited. Patent pending and/or patent www.assaabloydss.com/patents.

Roses/Rose Liners

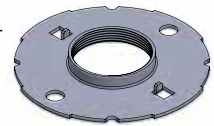
Part No.	Description
678F25 Fin*	Rose
892F372 Fin*	Rose (used with VSL Trim only)
598F59 Fin*	Blank Rose/Plate (CLX3380, CLX3381, CLX3383)
789F018	Rose Liner Inside 1-3/4" - 2"
789F028	Rose Liner Inside Over 2"
789F058	Rose Liner Outside 1-3/4" - 2"
789F068	Rose Liner Outside Over 2"
789F228	Rose Liner Assembly Outside CLX3380, CLX3381, CLX3383



678F25



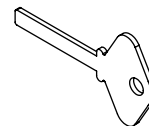
Inside Rose Liner



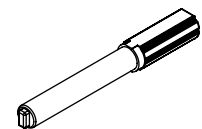
Outside Rose Liner

Miscellaneous

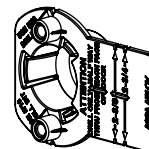
Part No.	Description
865F298	Emergency Release Tool (CLX3320)
867F388	1-3/8" Door Adapter Plates Pack (D138)
865F199	Hotel Adjustment Tool
041F478	Hotel Shut-out Key
889F829	Plastic door prep tool (through-bolts at 12 & 6 o'clock with 2-3/4" center to center)



865F298



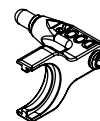
865F199



889F829

Miscellaneous (for VSL Trim only)

Part No.	Description
892F570	Button Arm Assembly, All Functions with Inside Indicator Except CLX3352
886F787	Shank Insert 1-3/8" - 1-3/4" Door, All Functions Except CLX3352
886F797	Shank Insert 2" Door, All Functions Except CLX3352
886F807	Shank Insert 2-1/4" Door, All Functions Except CLX3352
684F188	Outside Rose Liner Screw #8-32 x 3/8" PFHUTS



Button Arm Assembly



Shank Insert

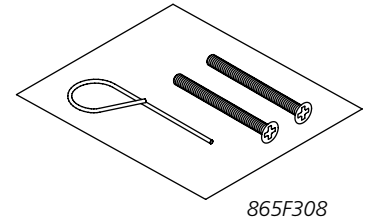
* Specify Finish

The warranty on Corbin Russwin products becomes void if the product is modified in any way, regardless of whether the modifications causes or contributes to any alleged defect. If a Corbin Russwin product is modified it may no longer meet industry certification and quality control standards applicable to the original product and is no longer a genuine Corbin Russwin product.

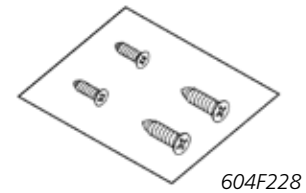
Copyright © 2021-2025, ASSA ABLOY Access and Egress Hardware Group, Inc. All rights reserved. Reproduction in whole or in part without the express written permission of ASSA ABLOY Access and Egress Hardware Group, Inc. is prohibited. Patent pending and/or patent www.assaabloydss.com/patents.

Mounting Screw Packs

Part No.	Description
865F308	1-3/8" - 2" Doors
865F398	Over 2" up to 2-1-4" Doors
867F73 Fin*	CLX3390 1-3/8" - 2-1/4" Phillips Head
867F74 Fin*	CLX3390 1-3/8" - 2-1/4" Spanner Head
867F75 Fin*	CLX3390 1-3/8" - 2-1/4" Torx Head
867F70 Fin*	CLX3350 Half Dummy Trim - Phillips Head
867F71 Fin*	CLX3350 Half Dummy Trim - Spanner Head
867F72 Fin*	CLX3350 Half Dummy Trim - Torx Head
869F150 Fin*	BHSS Trim - Security Pin Torx Head (includes mounting, latch and ANSI strike screws)

**Latch and Strike Screw Packs**

Part No.	Description
604F228 Fin*	Latch & ANSI Strike (4-7/8") - Phillips Head (Std)
604F238 Fin*	Latch & ANSI Strike (4-7/8") - Spanner Head
604F248 Fin*	Latch & ANSI Strike (4-7/8") - Torx Head
604F268 Fin*	Latch & T-Strike (2-3/4") - Phillips Head
604F278 Fin*	Latch & T-Strike (2-3/4") - Spanner Head
604F288 Fin*	Latch & T-Strike (2-3/4") - Torx Head



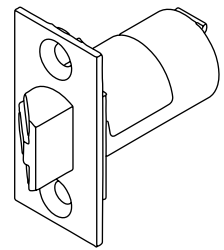
* Specify Finish

The warranty on Corbin Russwin products becomes void if the product is modified in any way, regardless of whether the modifications causes or contributes to any alleged defect. If a Corbin Russwin product is modified it may no longer meet industry certification and quality control standards applicable to the original product and is no longer a genuine Corbin Russwin product.

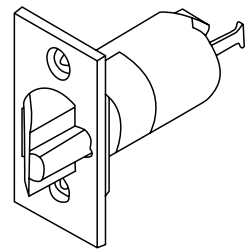
Copyright © 2021-2025, ASSA ABLOY Access and Egress Hardware Group, Inc. All rights reserved. Reproduction in whole or in part without the express written permission of ASSA ABLOY Access and Egress Hardware Group, Inc. is prohibited. Patent pending and/or patent www.assaabloydss.com/patents.

Plain Latch - CLX3310, CLX3320, CLX3320H, CLX3320TO

Part No.	Front	Front Width	Backset
867F20	Square Corner	1-1/8" (29mm)	2-3/4" (70mm)
867F26	Rounded Corner	1-1/8" (29mm)	2-3/4" (70mm)
897F60*	Square Corner	1" (25mm)	2-3/8" (60mm)
897F64*	Rounded Corner	1" (25mm)	2-3/8" (60mm)
897F58*	Square Corner	1-1/8" (29mm)	2-3/8" (60mm)
897F62*	Rounded Corner	1-1/8" (29mm)	2-3/8" (60mm)
867F22	Square Corner	1-1/8" (29mm)	3-3/4" (95mm)
867F28	Rounded Corner	1-1/8" (29mm)	3-3/4" (95mm)
867F24	Square Corner	1-1/8" (29mm)	5" (127mm)
867F30	Rounded Corner	1-1/8" (29mm)	5" (127mm)

**Plain****Deadlocking Latch - All Other Mechanical Functions**

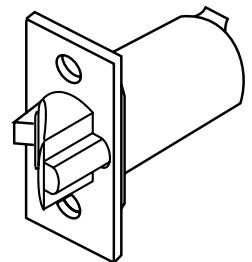
Part No.	Front	Front Width	Backset
867F21	Square Corner	1-1/8" (29mm)	2-3/4" (70mm)
867F27	Rounded Corner	1-1/8" (29mm)	2-3/4" (70mm)
897F61*	Square Corner	1" (25mm)	2-3/8" (60mm)
897F65*	Rounded Corner	1" (25mm)	2-3/8" (60mm)
897F59*	Square Corner	1-1/8" (29mm)	2-3/8" (60mm)
897F63*	Rounded Corner	1-1/8" (29mm)	2-3/8" (60mm)
867F23	Square Corner	1-1/8" (29mm)	3-3/4" (95mm)
867F29	Rounded Corner	1-1/8" (29mm)	3-3/4" (95mm)
867F25	Square Corner	1-1/8" (29mm)	5" (127mm)
867F31	Rounded Corner	1-1/8" (29mm)	5" (127mm)

**Deadlocking**

*These latchbolts are only compatible with 2-3/8" lockbodies shipped after October 1, 2024. For 2-3/8" latches used with lockbodies shipped prior to October 1, 2024, contact Technical Product Support.

Deadlocking Latch - Electrified Functions

Part No.	Front	Front Width	Backset
867F32	Square Corner	1-1/8" (29mm)	2-3/4" (70mm)
867F35	Rounded Corner	1-1/8" (29mm)	2-3/4" (70mm)
867F33	Square Corner	1-1/8" (29mm)	3-3/4" (95mm)
867F36	Rounded Corner	1-1/8" (29mm)	3-3/4" (95mm)
867F34	Square Corner	1-1/8" (29mm)	5" (127mm)
867F37	Rounded Corner	1-1/8" (29mm)	5" (127mm)

**3/4" Throw Deadlocking Fire Latch - for pair of doors****3/4" Throw Deadlocking Fire Latch**

Part No.	Front	Front Width	Backset
601F69	Square Corner	1-1/8" (29mm)	2-3/4" (70mm)

When ordering latchbolt, specify Part No. x Finish (e.g., 867F21 x 626). Screw pack must be ordered separately, see page 7.

The warranty on Corbin Russwin products becomes void if the product is modified in any way, regardless of whether the modifications causes or contributes to any alleged defect. If a Corbin Russwin product is modified it may no longer meet industry certification and quality control standards applicable to the original product and is no longer a genuine Corbin Russwin product.

Copyright © 2021-2025, ASSA ABLOY Access and Egress Hardware Group, Inc. All rights reserved. Reproduction in whole or in part without the express written permission of ASSA ABLOY Access and Egress Hardware Group, Inc. is prohibited. Patent pending and/or patent www.assaabloydss.com/patents.

ANSI Curved Lip (standard)

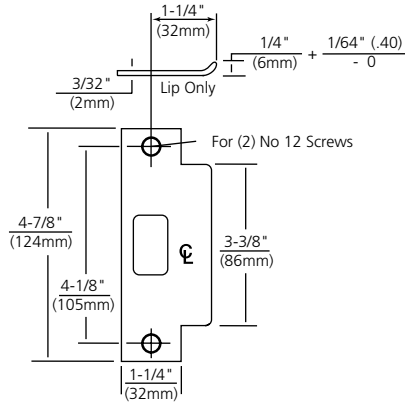
Brass or stainless steel.

4-7/8" (124mm) x 1-1/4" (32mm) x 1-1/4" (32mm) lip to center.

Optional lip lengths:

1" (25mm), 1-1/8" (29mm), 1-3/8" (35mm), 1-1/2" (38mm),
1-3/4" (44mm), 2" (51mm), 2-1/4" (57mm), 2-1/2" (64mm),
2-3/4" (70mm), 3" (76mm).

To order separately, specify Part No. x Finish.



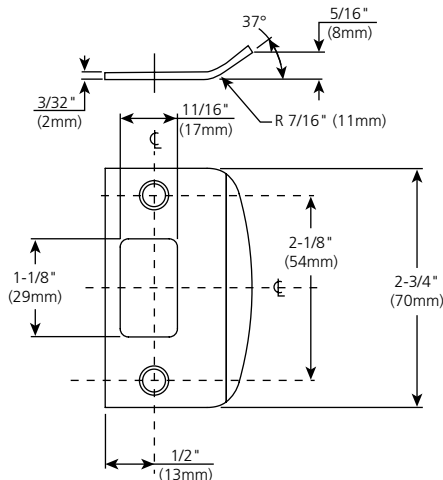
Full Lip Strike

Brass.

2- 3/4" (70mm) x full lip x 1-1/8" (29mm) lip to center.

No optional lip lengths.

To order separately, specify 607F76 x Finish.



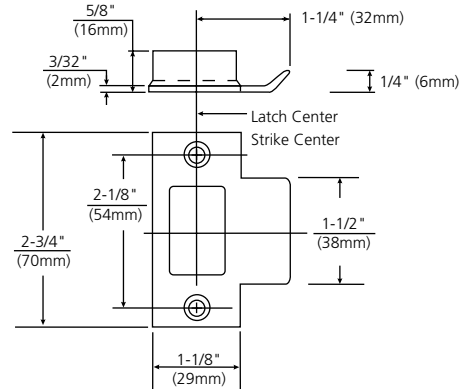
Curved Lip "T" Strike

Brass.

2-3/4" (70mm) x 1-1/8" (29mm) x 1-1/4" (32mm) lip to center.

Optional lip lengths: 1" (25mm), 1-1/8" (29mm), 1-3/8" (35mm), 1-1/2" (38mm), 1-3/4" (44mm), 2" (51mm), 2-1/4" (57mm), 2-1/2" (64mm), 2-3/4" (70mm), 3" (76mm).

To order separately, specify Part No. x Finish.

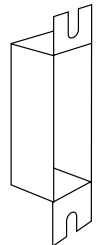


ANSI Wrought Strike Box

Used with ANSI 4-7/8" (124mm) strike .

To order with lockset, specify Quick Code M17.

To order separately, specify 120F768.



Strikes - 4-7/8" ANSI Curved Lip

Part No.	Description
217L13M016 Fin*	1" Lip Length
217L13M018 Fin*	1-1/8" Lip Length
217L13M020 Fin*	1-1/4" Lip Length
217L13M022 Fin*	1-3/8" Lip Length
217L13M024 Fin*	1-1/2" Lip Length
217L13M028 Fin*	1-3/4" Lip Length
217L13M032 Fin*	2" Lip Length
217L13M036 Fin*	2-1/4" Lip Length
217L13M040 Fin*	2-1/2" Lip Length
217L13M044 Fin*	2-3/4" Lip Length
217L13M048 Fin*	3" Lip Length

Strikes - 2-3/4" T- Curved Lip

Part No.	Description
586L19M016 Fin*	1" Lip Length
586L19M018 Fin*	1-1/8" Lip Length
586L19M020 Fin*	1-1/4" Lip Length
586L19M022 Fin*	1-3/8" Lip Length
586L19M024 Fin*	1-1/2" Lip Length
586L19M028 Fin*	1-3/4" Lip Length
586L19M032 Fin*	2" Lip Length
586L19M036 Fin*	2-1/4" Lip Length
586L19M040 Fin*	2-1/2" Lip Length
586L19M044 Fin*	2-3/4" Lip Length
586L19M048 Fin*	3" Lip Length

Strike - 2-3/4" Full Lip

Part No.	Description
607F76 Fin*	1-1/8" Lip Length

Strike Box

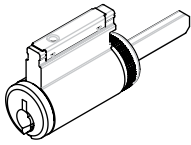
Part No.	Description
120F768	4-7/8" ANSI strike box

Screw pack must be ordered separately, see page 7.

*Specify finish

The warranty on Corbin Russwin products becomes void if the product is modified in any way, regardless of whether the modifications causes or contributes to any alleged defect. If a Corbin Russwin product is modified it may no longer meet industry certification and quality control standards applicable to the original product and is no longer a genuine Corbin Russwin product.

Copyright © 2021-2025, ASSA ABLOY Access and Egress Hardware Group, Inc. All rights reserved. Reproduction in whole or in part without the express written permission of ASSA ABLOY Access and Egress Hardware Group, Inc. is prohibited. Patent pending and/or patent www.assaabloydss.com/patents.

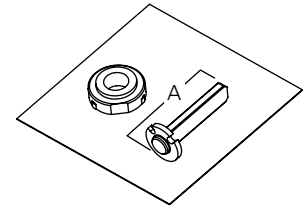


Access 3® - .510" plug diameter
 Pyramid - .496" plug diameter
 Conventional - .509" plug diameter
 Security - .552" plug diameter
 Brass, 6-pin
 2 nickel silver keys
 Finishes: 606, 626, BSP

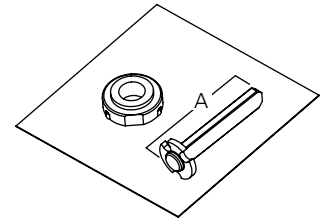
Fixed Core Cylinders for Mechanical Functions

Description	Cylinder Model Number	Door Thickness	Tailpiece Pack	Tailpiece ID Code*
6-Pin conventional, Security, Pyramid (7-Pin) and Access 3®	CR2000-034 (Std.) CR2010-034 CR2027-034 CR2020-034	1-3/8" - 2"	862F998	X6
	CR2000-034L CR2010-034L CR2027-034L CR2020-034L	2-1/4"	863F008	X6L
7-Pin conventional	CR2000-034-7	1-3/8" - 2"	863F018	X7
	CR2000-034L-7	2-1/4"	863F028	X7L
6-Pin competitor keyway	CR2400-034-C CR2400-034-C-KR CR2400-034-LA	1-3/8" - 2"	863F038	SX
	CR2400-034L-C CR2400-034L-C-KR CR2400-034L-LA	2-1/4"	863F048	SXL
Hotel function	CR2001-034A CR2001-034A-7 CR2501-034A	1-3/8" - 2-1/4"	N/A	—

*Cylinder type should be verified before ordering tailpiece pack.



862F998 (A=1.056")
 863F008 (A=1.280")
 863F018 (A=0.900")
 863F028 (A=1.124")

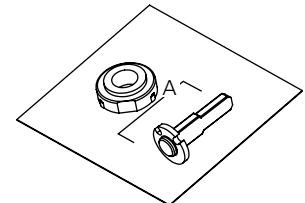


863F038 (A=1.056")
 863F048 (A=1.280")

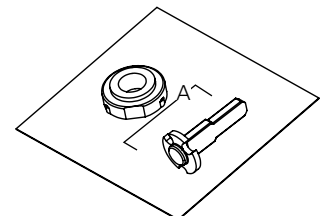
Fixed Core Cylinders for Electrified Functions

Description	Cylinder Model Number	Door Thickness	Tailpiece Pack	Tailpiece ID Code*
6-Pin conventional, security, Pyramid (7-Pin) and Access 3®	CR2000-E34 (Std.) CR2010-E34 CR2027-E34 CR2020-E34	1-3/8" - 2"	886F140	X6E
	CR2000-E34L CR2010-E34L CR2027-E34L CR2020-E34L	2-1/4"	886F150	X6LE
7-Pin conventional	CR2000-E34-7	1-3/8" - 2"	886F160	X7E
	CR2000-E34L-7	2-1/4"	886F170	X7LE
6-Pin competitor keyway	CR2400-E34-C CR2400-E34-C-KR CR2400-E34-LA	1-3/8" - 2"	886F180	SXE
	CR2400-E34L-C CR2400-E34L-C-KR CR2400-E34L-LA	2-1/4"	886F190	SXLE

*Cylinder type should be verified before ordering tailpiece pack.



886F140 (A=0.895")
 886F150 (A=1.058")
 886F160 (A=0.739")
 886F170 (A=0.902")

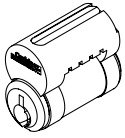


886F180 (A=0.895")
 886F190 (A=1.058")

The warranty on Corbin Russwin products becomes void if the product is modified in any way, regardless of whether the modifications causes or contributes to any alleged defect. If a Corbin Russwin product is modified it may no longer meet industry certification and quality control standards applicable to the original product and is no longer a genuine Corbin Russwin product.

Copyright © 2021-2025, ASSA ABLOY Access and Egress Hardware Group, Inc. All rights reserved. Reproduction in whole or in part without the express written permission of ASSA ABLOY Access and Egress Hardware Group, Inc. is prohibited. Patent pending and/or patent www.assaabloydss.com/patents.

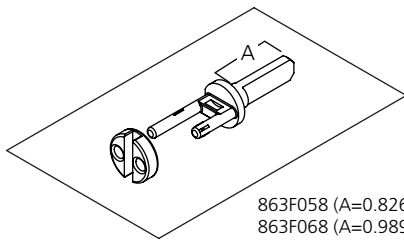
Large Format Interchangeable Core (LFIC) Mechanical and Electrified Functions



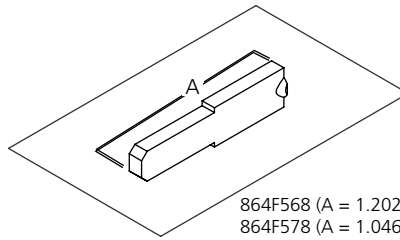
Access 3® - .510" plug diameter
 Pyramid - .496" plug diameter
 Conventional - .509" plug diameter
 Security - .552" plug diameter
 Brass, 6-pin
 2 nickel silver keys
 Finishes: 606, 626, BSP

Description	Core Model Number	Door Thickness	Mechanical Functions		Electrified Functions	
			Tailpiece Pack	Tailpiece ID Code*	Tailpiece Pack	Tailpiece ID Code*
6-or 7-Pin LFIC conventional, security, Pyramid and Access 3®	CR8000	1-3/8" - 2"	863F058	LFIC	886F200	EM LFIC
	CR8000-7					
	CR8010	2-1/4"	863F068	LF2	886F210	EM LF2
	CR8020					
Hotel function	CR8001-034A	1-3/8" - 2-1/4"	864F568	—	N/A	—
	CR8001-034A-7	1-3/8" - 2-1/4"	864F578	—	N/A	—

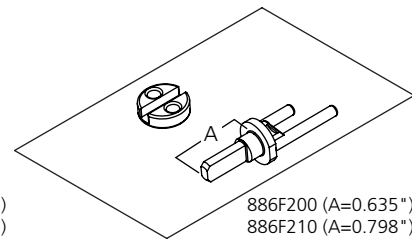
*Cylinder type should be verified before ordering tailpiece pack.



863F058 (A=0.826")
 863F068 (A=0.989")



864F568 (A = 1.202")
 864F578 (A = 1.046")

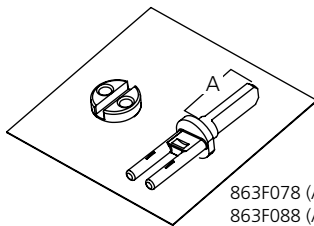


886F200 (A=0.635")
 886F210 (A=0.798")

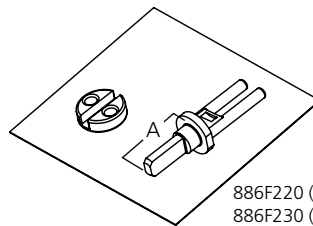
Small Format Interchangeable Core (SFIC) Mechanical and Electrified Functions

Description	Core Model Number	Door Thickness	Mechanical Functions		Electrified Functions	
			Tailpiece Pack	Tailpiece ID Code*	Tailpiece Pack	Tailpiece ID Code*
6-Pin SFIC	CR8200	1-3/8" - 2"	863F078	SFIC	886F220	EM SFIC
7-Pin SFIC	CR8200-7	2-1/4"	863F088	SF2	886F230	EM SF2

*Cylinder type should be verified before ordering tailpiece pack.



863F078 (A=0.826")
 863F088 (A=0.989")



886F220 (A=0.635")
 886F230 (A=0.798")

The warranty on Corbin Russwin products becomes void if the product is modified in any way, regardless of whether the modifications causes or contributes to any alleged defect. If a Corbin Russwin product is modified it may no longer meet industry certification and quality control standards applicable to the original product and is no longer a genuine Corbin Russwin product.

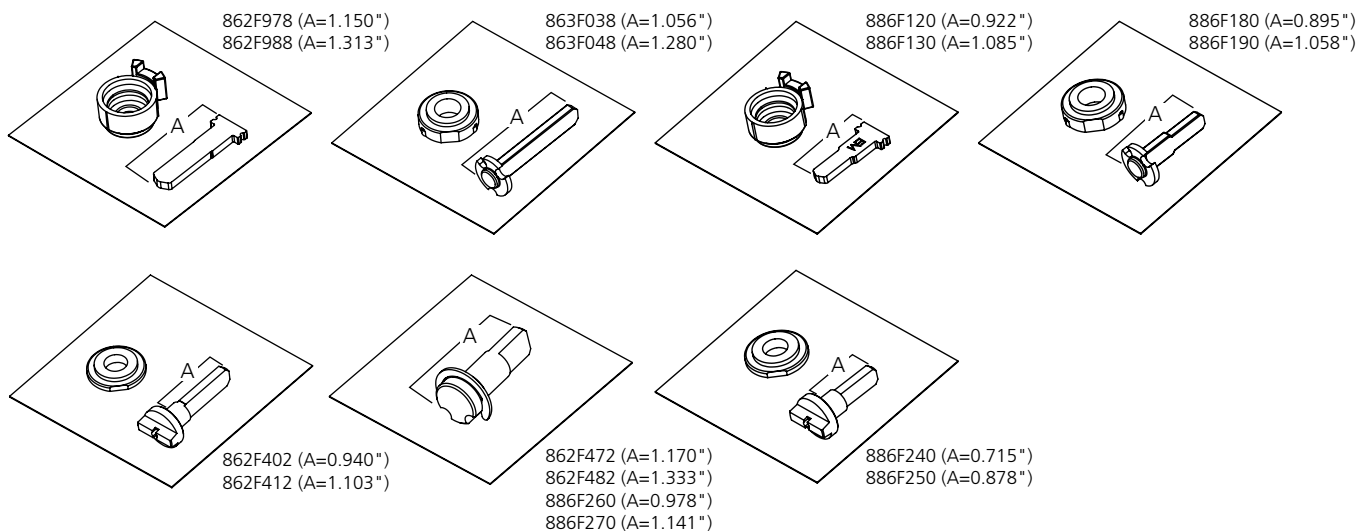
Copyright © 2021-2025, ASSA ABLOY Access and Egress Hardware Group, Inc. All rights reserved. Reproduction in whole or in part without the express written permission of ASSA ABLOY Access and Egress Hardware Group, Inc. is prohibited. Patent pending and/or patent www.assaabloydss.com/patents.

Compatibility with Competitive Cylinders/Cores*

Manufacturer	Cylinder Type	Door Thickness	Mechanical Functions		Electrified Functions		Option Code with Lock	Description
			Tailpiece Pack	Tailpiece ID Code**	Tailpiece Pack	Tailpiece ID Code**		
Fixed Core								
Sargent®	Fixed Core 6 Pin	1-3/8" - 2"	862F978	–	886F120	EM	M09	For Sargent® 6 pin cylinders (13-3266). Option code with lock includes special lever and tailpiece.
		2-1/4"	862F988	214	886F130	214E		
Schlage®	Fixed Core 6 Pin	1-3/8" - 2"	863F038	SX	886F180	SXE	M06	For Schlage® 6 pin conventional cylinders (21-002, 23-001 or 23-013) or Schlage Primus cylinders (20-548, 20-550, 20-748 or 20-750). Option code with lock includes tailpiece.
		2-1/4"	863F048	SXL	886F190	SXLE		
ASSA ABLOY ACCENTRA®	Fixed Core 6 Pin	1-3/8" - 2"	862F998	X6	886F140	X6E	YC	For ASSA ABLOY ACCENTRA® 6 pin conventional cylinders (1803-46L or 1803-46LL). Option code with lock includes tailpiece.
		2-1/4"	863F008	X6L	886F150	X6LE		
ASSA ABLOY ACCENTRA®	Fixed Core 7 Pin	1-3/8" - 2"	863F018	X7	886F160	X7E	YC7	For ASSA ABLOY ACCENTRA® 7 pin conventional cylinders (1803A-46L or 1803A-46LL). Option code with lock includes tailpiece.
		2-1/4"	863F028	X7L	886F170	X7LE		
Interchangeable Core								
All	SFIC 6 or 7 Pin	1-3/8" - 2"	863F078	SFIC	886F220	EM SFIC	M08	For all SFIC 6 and 7 pin cores. Option code with lock includes special lever and tailpiece.
		2-1/4"	863F088	SF2	886F230	EM SF2		
Schlage®	LFIC 6 Pin	1-3/8" - 2"	862F472	–	886F260	EM	M69	For Schlage® 6 pin large format interchangeable cores. Option code with lock includes special lever and tailpiece.
		2-1/4"	862F482	–	886F270	EM 214		
ASSA ABLOY ACCENTRA®	LFIC 6 Pin	1-3/8" - 2"	862F402	YR	886F240	EM	YRC	For ASSA ABLOY ACCENTRA® 6 pin large format interchangeable cores. Option code with lock includes special lever and tailpiece.
		2-1/4"	862F412	YR214	886F250	EM214		

*Cylinder/core not included

**Cylinder type should be verified before ordering tailpiece pack.



The warranty on Corbin Russwin products becomes void if the product is modified in any way, regardless of whether the modifications causes or contributes to any alleged defect. If a Corbin Russwin product is modified it may no longer meet industry certification and quality control standards applicable to the original product and is no longer a genuine Corbin Russwin product.

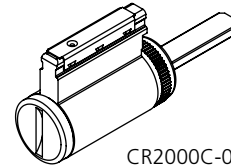
Copyright © 2021-2025, ASSA ABLOY Access and Egress Hardware Group, Inc. All rights reserved. Reproduction in whole or in part without the express written permission of ASSA ABLOY Access and Egress Hardware Group, Inc. is prohibited. Patent pending and/or patent www.assaabloydss.com/patents.

Miscellaneous Cylinder Parts

Part #	Description
627F009	Disposable Cores Corbin Russwin LFIC (10 pack)
707F299	Disposable Cores SFIC (10 pack)
862F049	Spacer Only - Fixed Core Cylinder
CR2000C-034	Emergency Release Cylinder - Privacy/Bathroom Function (CLX3330), 1-3/8" - 2" Doors
CR2000C-034L	Emergency Release Cylinder - Privacy/Bathroom Function (CLX3330), 2-1/4" Doors



862F049

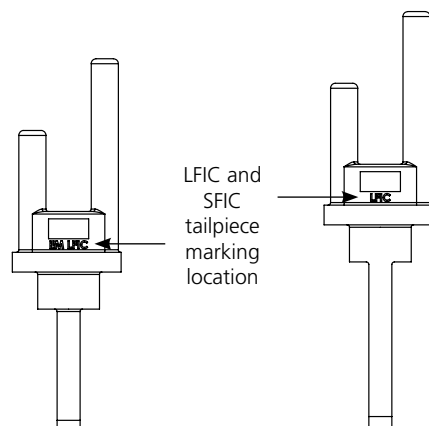


CR2000C-034

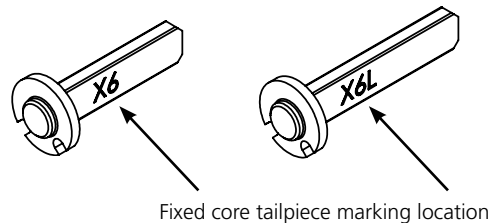
Identifying Tailpieces

CLX3300 Series cylinder tailpieces include stampings to help identify them. Refer to tailpiece ID code as noted on previous pages.

Cylinder type should be verified before ordering tailpiece pack.



LFIC and SFIC tailpiece marking location



Fixed core tailpiece marking location

The warranty on Corbin Russwin products becomes void if the product is modified in any way, regardless of whether the modifications causes or contributes to any alleged defect. If a Corbin Russwin product is modified it may no longer meet industry certification and quality control standards applicable to the original product and is no longer a genuine Corbin Russwin product.

Copyright © 2021-2025, ASSA ABLOY Access and Egress Hardware Group, Inc. All rights reserved. Reproduction in whole or in part without the express written permission of ASSA ABLOY Access and Egress Hardware Group, Inc. is prohibited. Patent pending and/or patent www.assaabloydss.com/patents.

Armstrong AZD Lever: Solid cast zinc Rose: Wrought brass		Newport NZD Lever: Solid cast zinc Rose: Wrought brass		Princeton PZD Lever: Solid cast zinc Rose: Wrought brass	
---	--	---	--	---	--

Decorative Levers

102 	106 	123 	124
----------------	----------------	----------------	----------------

Levers for Doors 1-3/8" - 2-1/4" (Specify finish)

Application	AZ	NZ	PZ	102	106	123	124
Passage/plain	860F005	860F205	860F405	860F655	860F905	861F035	860F775
Emergency key hole	860F055	860F255	860F455	860F705	860F955	861F085	860F825
Fixed core cylinder (Corbin Russwin 6/7-pin, ASSA ABLOY ACCENTRA® 6/7-pin, Schlage® 6-pin)	860F015	860F215	860F415	860F665	860F915	861F045	860F785
Fixed core cylinder (Corbin Russwin 6/7-pin, ASSA ABLOY ACCENTRA® 6/7-pin, Schlage® 6-pin inside CLX3352)	860F025	860F225	860F425	N/A	N/A	N/A	N/A
Push/turn button or fixed core cylinder (SARGENT® 6-pin)	860F035	860F235	860F435	860F685	860F935	861F065	860F805
Fixed core cylinder (SARGENT® inside CLX3352)	860F045	860F245	860F445	N/A	N/A	N/A	N/A
LFIC (Corbin Russwin 6-pin)	860F065	860F265	860F465	860F715	860F965	861F095	860F835
LFIC (Corbin Russwin 6-pin inside CLX3352)	860F075	860F275	860F475	N/A	N/A	N/A	N/A
LFIC (Corbin Russwin 7-pin)	860F085	860F285	860F485	860F735	860F985	861F115	860F855
LFIC (Corbin Russwin 7-pin inside CLX3352)	860F095	860F295	860F495	N/A	N/A	N/A	N/A
LFIC (Schlage® 6-pin)	860F125	860F325	860F525	N/A	N/A	N/A	N/A
LFIC (Schlage® 6-pin inside CLX3352)	860F135	860F335	860F535	N/A	N/A	N/A	N/A
LFIC (ASSA ABLOY ACCENTRA® 6-pin)	860F145	860F345	860F545	N/A	N/A	N/A	N/A
LFIC (ASSA ABLOY ACCENTRA® 6-pin inside CLX3352)	860F155	860F355	860F555	N/A	N/A	N/A	N/A
SFIC 6/7-pin	860F105	860F305	860F505	860F755	861F015	861F135	860F875
SFIC 6/7-pin (inside CLX3352)	860F115	860F315	860F515	N/A	N/A	N/A	N/A

The warranty on Corbin Russwin products becomes void if the product is modified in any way, regardless of whether the modifications causes or contributes to any alleged defect. If a Corbin Russwin product is modified it may no longer meet industry certification and quality control standards applicable to the original product and is no longer a genuine Corbin Russwin product.

Copyright © 2021-2025, ASSA ABLOY Access and Egress Hardware Group, Inc. All rights reserved. Reproduction in whole or in part without the express written permission of ASSA ABLOY Access and Egress Hardware Group, Inc. is prohibited. Patent pending and/or patent www.assaabloydss.com/patents.

Levers with Knurling for Doors 1-3/8" to 2-1/4" (Specify finish)

Application	AZ	NZ	PZ	102	106	123	124
Passage/plain	860N005	860N205	860N405	N/A	N/A	N/A	N/A
Emergency key hole	860N055	860N255	860N455	N/A	N/A	N/A	N/A
Fixed core cylinder (Corbin Russwin 6/7-pin, ASSA ABLOY ACCENTRA® 6/7-pin, Schlage® 6-pin)	860N015	860N215	860N415	N/A	N/A	N/A	N/A
Fixed core cylinder (Corbin Russwin 6/7-pin, ASSA ABLOY ACCENTRA® 6/7-pin, Schlage® 6-pin inside CLX3352)	860N025	860N225	860N425	N/A	N/A	N/A	N/A
Push/turn button or fixed core cylinder (SARGENT® 6-pin)	860N035	860N235	860N435	N/A	N/A	N/A	N/A
Fixed core cylinder (SARGENT® inside CLX3352)	860N045	860N245	860N445	N/A	N/A	N/A	N/A
LFIC (Corbin Russwin 6-pin)	860N065	860N265	860N465	N/A	N/A	N/A	N/A
LFIC (Corbin Russwin 6-pin inside CLX3352)	860N075	860N275	860N475	N/A	N/A	N/A	N/A
LFIC (Corbin Russwin 7-pin)	860N085	860N285	860N485	N/A	N/A	N/A	N/A
LFIC (Corbin Russwin 7-pin inside CLX3352)	860N095	860N295	860N495	N/A	N/A	N/A	N/A
LFIC (Schlage® 6-pin)	860N125	860N325	860N525	N/A	N/A	N/A	N/A
LFIC (Schlage® 6-pin inside CLX3352)	860N135	860N335	860N535	N/A	N/A	N/A	N/A
LFIC (ASSA ABLOY ACCENTRA® 6-pin)	860N145	860N345	860N545	N/A	N/A	N/A	N/A
LFIC (ASSA ABLOY ACCENTRA® 6-pin inside CLX3352)	860N155	860N355	860N555	N/A	N/A	N/A	N/A
SFIC 6/7-pin	860N105	860N305	860N505	N/A	N/A	N/A	N/A
SFIC 6/7-pin (inside CLX3352)	860N115	860N315	860N515	N/A	N/A	N/A	N/A

Levers with Abrasive Coat for Doors 1-3/8" to 2-1/4" (Specify finish)

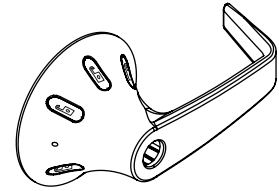
Application	AZ	NZ	PZ	102	106	123	124
Passage/plain	860R005	860R205	860R405	N/A	N/A	N/A	N/A
Emergency key hole	860R055	860R255	860R415	N/A	N/A	N/A	N/A
Fixed core cylinder (Corbin Russwin 6/7-pin, ASSA ABLOY ACCENTRA® 6/7-pin, Schlage® 6-pin)	860R015	860R215	860R425	N/A	N/A	N/A	N/A
Fixed core cylinder (Corbin Russwin 6/7-pin, ASSA ABLOY ACCENTRA® 6/7-pin, Schlage® 6-pin inside CLX3352)	860R025	860R225	860R435	N/A	N/A	N/A	N/A
Push/turn button or fixed core cylinder (SARGENT® 6-pin)	860R035	860R235	860R445	N/A	N/A	N/A	N/A
Fixed core cylinder (SARGENT® inside CLX3352)	860R045	860R245	860R455	N/A	N/A	N/A	N/A
LFIC (Corbin Russwin 6-pin)	860R065	860R265	860R465	N/A	N/A	N/A	N/A
LFIC (Corbin Russwin 6-pin inside CLX3352)	860R075	860R275	860R475	N/A	N/A	N/A	N/A
LFIC (Corbin Russwin 7-pin)	860R085	860R285	860R485	N/A	N/A	N/A	N/A
LFIC (Corbin Russwin 7-pin inside CLX3352)	860R095	860R295	860R495	N/A	N/A	N/A	N/A
LFIC (Schlage® 6-pin)	860R125	860R325	860R525	N/A	N/A	N/A	N/A
LFIC (Schlage® 6-pin inside CLX3352)	860R135	860R335	860R535	N/A	N/A	N/A	N/A
LFIC (ASSA ABLOY ACCENTRA® 6-pin)	860R145	860R345	860R545	N/A	N/A	N/A	N/A
LFIC (ASSA ABLOY ACCENTRA® 6-pin inside CLX3352)	860R155	860R355	860R555	N/A	N/A	N/A	N/A
SFIC 6/7-pin	860R105	860R305	860R505	N/A	N/A	N/A	N/A
SFIC 6/7-pin (inside CLX3352)	860R115	860R315	860R515	N/A	N/A	N/A	N/A

The warranty on Corbin Russwin products becomes void if the product is modified in any way, regardless of whether the modifications causes or contributes to any alleged defect. If a Corbin Russwin product is modified it may no longer meet industry certification and quality control standards applicable to the original product and is no longer a genuine Corbin Russwin product.

Copyright © 2021-2025, ASSA ABLOY Access and Egress Hardware Group, Inc. All rights reserved. Reproduction in whole or in part without the express written permission of ASSA ABLOY Access and Egress Hardware Group, Inc. is prohibited. Patent pending and/or patent www.assaabloydss.com/patents.

Red/Green Indicator Lever Assemblies With Padlock Icons for Doors 1-3/8" - 2-1/4" (Specify finish)

Application	NVSL		
	Inside	Inside CLX3352 Function Only*	Outside
Passage/Plain	892F900		892F920
Emergency key hole			893F020
Fixed core cylinder (Corbin Russwin 6/7-pin, ASSA ABLOY ACCENTRA® 6/7-pin, Schlage® 6-pin)		897F680	892F960
Push/turn button or fixed core cylinder (SARGENT 6-pin)	892F940	897F670	893F000
LFIC (Corbin Russwin 6-pin)		897F690	893F080
LFIC (Corbin Russwin 7-pin)		897F700	893F120
LFIC (Schlage® 6-pin)		897F720	893F200
LFIC (ASSA ABLOY ACCENTRA® 6-pin)		897F730	893F160
SFIC (6/7-pin)		897F710	893F040



NVSL Lever Assembly

Red/White Indicator Lever Assemblies With Padlock Icons for Doors 1-3/8" - 2-1/4" (Specify finish)

Application	NVSL		
	Inside	Inside CLX3352 Function Only*	Outside
Passage/Plain	892F910		892F930
Emergency key hole			893F030
Fixed core cylinder (Corbin Russwin 6/7-pin, ASSA ABLOY ACCENTRA® 6/7-pin, Schlage® 6-pin)		897F760	893F010
Push/turn button or fixed core cylinder (SARGENT 6-pin)	892F950	897F750	892F970
LFIC (Corbin Russwin 6-pin)		897F770	893F090
LFIC (Corbin Russwin 7-pin)		897F780	893F130
LFIC (Schlage® 6-pin)		897F800	893F050
LFIC (ASSA ABLOY ACCENTRA® 6-pin)		897F810	893F170
SFIC (6/7-pin)		897F790	893F210

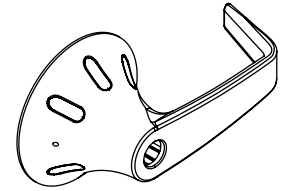
*Inside levers for CLX3352 function include "Lock" engraving on lever

The warranty on Corbin Russwin products becomes void if the product is modified in any way, regardless of whether the modifications causes or contributes to any alleged defect. If a Corbin Russwin product is modified it may no longer meet industry certification and quality control standards applicable to the original product and is no longer a genuine Corbin Russwin product.

Copyright © 2021-2025, ASSA ABLOY Access and Egress Hardware Group, Inc. All rights reserved. Reproduction in whole or in part without the express written permission of ASSA ABLOY Access and Egress Hardware Group, Inc. is prohibited. Patent pending and/or patent www.assaabloydss.com/patents.

Red/Green Indicator Lever Assemblies No Padlock Icons for Doors 1-3/8" - 2-1/4" (Specify finish)

Application	NVSL	
	Inside	Outside
Fixed core cylinder (Corbin Russwin 6/7-pin, ASSA ABLOY ACCENTRA® 6/7-pin, Schlage® 6-pin)		899F690
Push/turn button or fixed core cylinder (SARGENT 6-pin)	899F830	899F700
LFIC (Corbin Russwin 6-pin)		899F710
LFIC (Corbin Russwin 7-pin)		899F720
LFIC (Schlage® 6-pin)		899F740
LFIC (ASSA ABLOY ACCENTRA® 6-pin)		899F750
SFIC (6/7-pin)		899F730



NVSL Lever Assembly

Red/White Indicator Lever Assemblies No Padlock Icons for Doors 1-3/8" - 2-1/4" (Specify finish)

Application	NVSL	
	Inside	Outside
Fixed core cylinder (Corbin Russwin 6/7-pin, ASSA ABLOY ACCENTRA® 6/7-pin, Schlage® 6-pin)		899F760
Push/turn button or fixed core cylinder (SARGENT 6-pin)	899F840	899F770
LFIC (Corbin Russwin 6-pin)		899F780
LFIC (Corbin Russwin 7-pin)		899F790
LFIC (Schlage® 6-pin)		899F810
LFIC (ASSA ABLOY ACCENTRA® 6-pin)		899F820
SFIC (6/7-pin)		899F800

The warranty on Corbin Russwin products becomes void if the product is modified in any way, regardless of whether the modifications causes or contributes to any alleged defect. If a Corbin Russwin product is modified it may no longer meet industry certification and quality control standards applicable to the original product and is no longer a genuine Corbin Russwin product.

Copyright © 2021-2025, ASSA ABLOY Access and Egress Hardware Group, Inc. All rights reserved. Reproduction in whole or in part without the express written permission of ASSA ABLOY Access and Egress Hardware Group, Inc. is prohibited. Patent pending and/or patent www.assaabloydss.com/patents.

How to Order Parts

1. In order to simplify the ordering procedure and maintain regulatory compliance, parts are only available as listed
2. To order parts, provide the appropriate quantity, part number, finish, hand (when required) and description as directed and illustrated below.

For example, use the following configuration to order:

A) ten lockbodies in satin chrome

B) one rose in bright brass

	Quantity	Part Number	Finish	Hand	Description
A	10	861F748 Fin	626	—	Privacy Function Lockbody
B	1	678F25 Fin	605	—	Rose

For assistance, contact your authorized Corbin Russwin distributor, sales agency or visit our website at www.corbinrusswin.com.

Finishes

ANSI/BHMA Code	Finish Description
605	Bright Brass, Clear Coated
606	Satin Brass, Clear Coated
611	Bright Bronze, Clear Coated
612	Satin Bronze, Clear Coated
613	Dark Oxidized Satin Bronze, Oil Rubbed
613E	Dark Oxidized Satin Bronze, Equivalent
613L	Dark Oxidized Satin Bronze, Clear Coated
618	Bright Nickel, Clear Coated
619	Satin Nickel Plated, Clear Coated
619C	Satin Nickel Plated with MicroShield®
625	Bright Chrome Plated
626	Satin Chrome Plated
626C	Satin Chrome Plated with MicroShield®
630	Satin Stainless Steel (BHSS only)
630C	Satin Stainless Steel with MicroShield® (BHSS only)
722	Black Oxidized Satin Bronze, Oil Rubbed
BSP	Black Suede Powder Coat
WSP	White Suede Powder Coat

Lock Finish	Cylinder/Core*
605, 606, 611, 612, 613, 613E, 613L, 722	606
618, 619, 625, 626, 630, WSP	626
BSP	BSP

*Finish when cylinder provided with lock, exceptions may apply.

The warranty on Corbin Russwin products becomes void if the product is modified in any way, regardless of whether the modifications causes or contributes to any alleged defect. If a Corbin Russwin product is modified it may no longer meet industry certification and quality control standards applicable to the original product and is no longer a genuine Corbin Russwin product.

Copyright © 2021-2025, ASSA ABLOY Access and Egress Hardware Group, Inc. All rights reserved. Reproduction in whole or in part without the express written permission of ASSA ABLOY Access and Egress Hardware Group, Inc. is prohibited. Patent pending and/or patent www.assaabloydss.com/patents.

The warranty on Corbin Russwin products becomes void if the product is modified in any way, regardless of whether the modifications causes or contributes to any alleged defect. If a Corbin Russwin product is modified it may no longer meet industry certification and quality control standards applicable to the original product and is no longer a genuine Corbin Russwin product.

Copyright © 2021-2025, ASSA ABLOY Access and Egress Hardware Group, Inc. All rights reserved. Reproduction in whole or in part without the express written permission of ASSA ABLOY Access and Egress Hardware Group, Inc. is prohibited. Patent pending and/or patent www.assaabloydss.com/patents.

The ASSA ABLOY Group is the global leader in access solutions. Every day, we help billions of people experience a more open world.

ASSA ABLOY Opening Solutions leads the development within door openings and products for access solutions in homes, businesses and institutions. Our offering includes doors, frames, door and window hardware, mechanical and smart locks, access control and service.



For additional information, contact your
ASSA ABLOY Door Security Solutions
sales consultant or visit **www.corbinrusswin.com**.

In U.S.

Corbin Russwin
Architectural Hardware
225 Episcopal Road
Berlin, CT 06037
Phone: 800-543-3658
Fax: 800-447-6714
www.corbinrusswin.com

In Canada

ASSA ABLOY Door
Security Solutions Canada
160 Four Valley Drive
Vaughan, Ontario
Canada L4K 4T9
Phone: 800-461-3007
Fax: 800-461-8989
www.assaabloydss.ca