

©

©

8400 CONCEALED VERTICAL ROD AND 8500 RIM: NARROW DESIGN ELECTROFIED EXIT DEVICE RAIL ON NARROW STILE TYPE DOOR CONSTRUCTION

8300 MORTISE LOCK: NARROW DESIGN ELECTROFIED EXIT DEVICE RAIL ON WIDE STILE TYPE DOOR CONSTRUCTION.

DIMENSION "X" CROSS-REFERENCE CHART

DIMENSION "X" CROSS-REFERENCE CHART

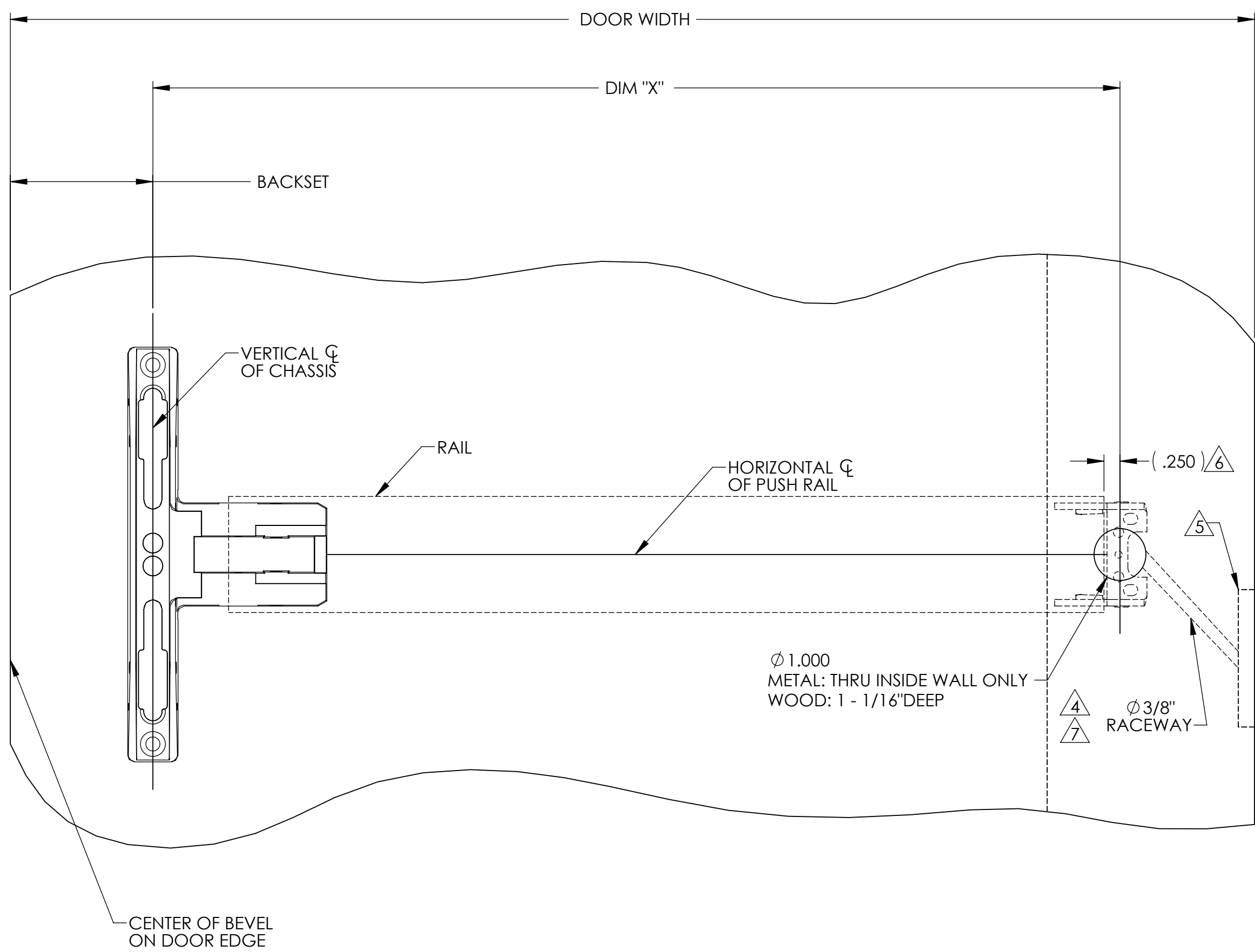
DOOR WIDTH	DIM "X" FOR NARROW DESIGN CHASSIS
48"	45.365"
47"	44.365"
46"	43.365"
45"	42.365"
44"	41.365"
43"	40.365"
42"	39.365"
41"	38.365"
40"	37.365"
39"	36.365"
38"	35.365"
37"	34.365"
36"	33.365"
35"	32.365"
34"	31.365"
33"	30.365"
32"	29.365"
31"	28.365"
30"	27.365"
29"	26.365"
28"	25.365"
27"	24.365"
26"	23.365"
25"	22.365"
24"	21.365"

DOOR WIDTH	DIM "X" FOR NARROW DESIGN CHASSIS
48"	42.180"
47"	41.180"
46"	40.180"
45"	39.180"
44"	38.180"
43"	37.180"
42"	36.180"
41"	35.180"
40"	34.180"
39"	33.180"
38"	32.180"
37"	31.180"
36"	30.180"
35"	29.180"
34"	28.180"
33"	27.180"
32"	26.180"
31"	25.180"
30"	24.180"
29"	23.180"
28"	22.180"
27"	21.180"
26"	20.180"
25"	19.180"
24"	18.180"

AUTHORIZED 80 SERIES EXIT DEVICE PREFIX TEMPLATE AND INSTUCTION SHEET

DESCRIPTION	PREFIX	INSTALLATION INSTUCTIONS
LATCH MONITOR SWITCH	53-	A7678
SIGNAL SWITCH RAIL	55-	A6808
ELECTRIFIED LATCH RETRACTION	56-	A7925
DELAYED EGRESS	57-	A7743
ELECTRIC DOGGING	58-	A6835
ELECTROGUARD	59-	A7690
ALARMED	AL-	A7224
BEACON	BT-	A7974
ILLUMINATED TOUCHPAD	TL-	A7711

©



NOTES:

- IMPORTANT: FOR LOCATION OF VERTICAL AND HORIZONTAL Q , AND ADDITIONAL EXIT DEVICE PREP. REFER TO APPROPRIATE EXIT DEVICE TEMPLATE.
- FOR ELECTROLYNX™ APPLICATIONS REFER TO THE MCKINNEY TRANSFER DEVICE.
- HARNES ROUTES MAY DIFFER BY DOOR, CONSULT DOOR MANUFACTURERS SPECS FOR ROUTES USED.
- 3/8" RACEWAY FOR ELECTROLYNX™ APPLICATIONS REFER TO MCKINNY TRANSFER DEVICE CATALOG.
- CONSULT WITH POWER TRANSFER DEVICE MANUFACTURER AND DOOR MANUFACTURER FOR DOOR AND FRAME TEMPLATE DETAILS.
- FOR MODIFIED RAIL LENGTHS; POSITION HOLE .250" BEYOND END OF RAIL.
- DOOR MFG TO PROVIDE CLEARANCE IN REINFORCEMENT TO ALLOW INSERTION OF ELECTRICAL WIRES RUNNING BETWEEN RAIL AND ELECTRIC HINGE. MAKE PROVISIONS TO PROTECT WIRES FROM ABRASION.

<b>SARGENT</b> <b>ASSA ABLOY</b>	Sargent Manufacturing Company 100 Sargent Drive New Haven, CT 06511	
	DOOR MANUFACTURERS TEMPLATE: ELECTRO - MECHANICAL EXIT DEVICE RAILS (NARROW DESIGN)	RELEASE DATE <b>FEB 11, 2010</b> TEMPLATE NO. 4568 C

©