

SARGENT®

ASSA ABLOY

7 Line Parts Manual



For assistance, contact SARGENT at
800-727-5477 or www.sargentlock.com

⚠ WARNING

This product can expose you to lead which is known to the state of California to cause cancer and birth defects or other reproductive harm. For more information go to www.P65warnings.ca.gov.

08/2018

7 Line Lever Lock

PARTS LIST

PAGE NO.	REV.
7.0	1-18-05

Table of Contents

Page

Lock Functions	7.1
Lock Illustration	7.2
Parts List	7.3
Lock Illustration (same)	7.4
Parts List (cont.)	7.5

7 Line Lever Lock Functions

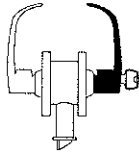
PARTS LIST

PAGE NO. REV.
7.1 1-18-05

Shaded Lever = Rigid at all times
Half Shaded Lever = Rigid when locked
Freewheeling available on all locked functions

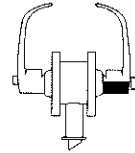
7G04

Storeroom or Closet



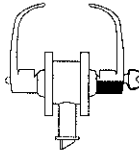
7U68

Hospital Privacy



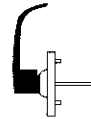
7G05

Entrance or Office



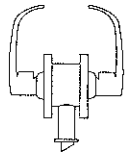
7U93

Single Lever Pull



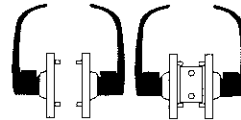
7U15

Passage



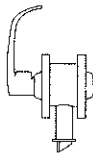
7U94 / 94-2

Double Lever Pull
(-2 With Blank Front)



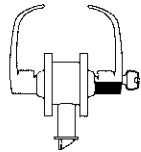
7G15-3

Exit or
Twin Communicating



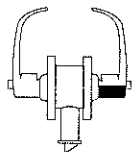
7G37

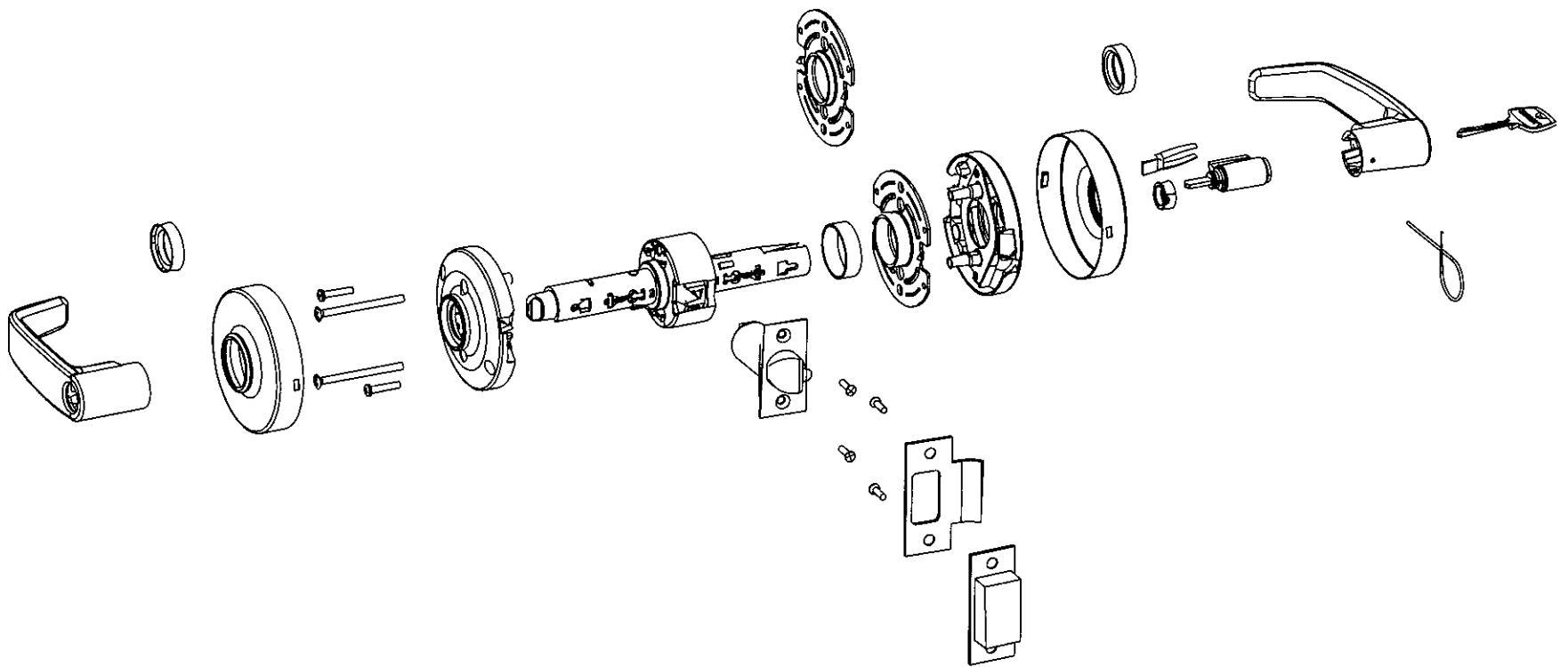
Classroom



7U65

Privacy, Bedroom







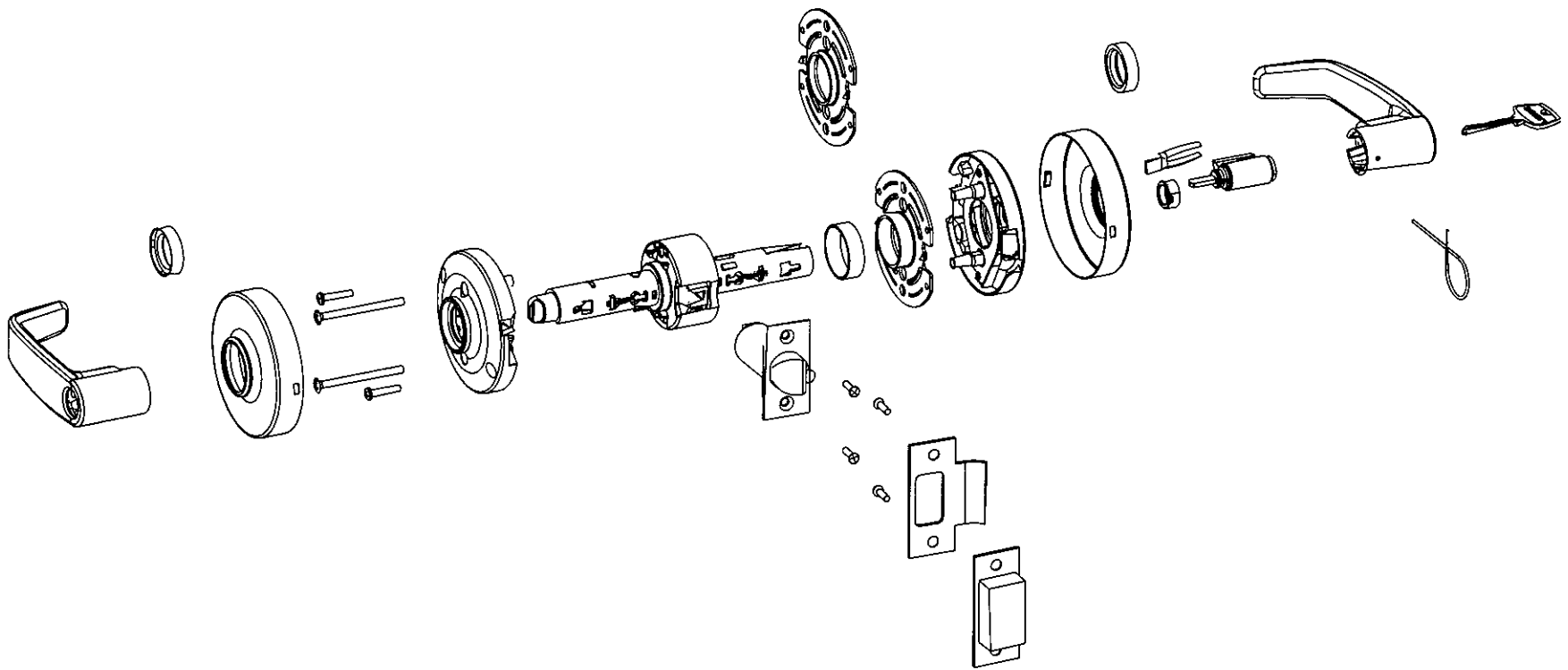
PARTS LIST	
PAGE NO.	REV.
7.2	1-18-05

① See Screw Pack
for these items

7 Line Lever Lock (Locks manufactured after January 2005)
7G05 Function shown

ITEM	PART NO.	DESCRIPTION	QTY
1	Inside and Outside Levers (Specify Finish)		
	"B" Design		
	10-0523	Passage	1
	10-0524	Cylinder	1
	10-1525	Push Button/Emergency Button/30-Prefix	1
	10-0526	Removable Core	1
	10-0527	Interchangeable Core	1
	10-0528	Keso	1
	10-0534	Passage – Handicap	1
	10-1535	Cylinder – Handicap	1
	10-0536	Push Button/Emergency Button/30-Prefix – Handicap	1
	10-0537	Removable Core – Handicap	1
	10-0538	Interchangeable Core – Handicap	1
	10-0539	Keso – Handicap	1
	"G" Design – Decorative (Coastal Series)		
	10-0567	Passage (Left)	1
	10-0568	Passage (Right)	1
	10-0569	Cylinder (Left)	1
	10-0570	Cylinder (Right)	1
	10-0571	Push Button/Emergency Button/30-Prefix (Left)	1
	10-0572	Push Button/Emergency Button/30-Prefix (Right)	1
	10-0573	Removable Core (Left)	1
	10-0574	Removable Core (Right)	1
	10-0575	Interchangeable Core (Left)	1
	10-0576	Interchangeable Core (Right)	1
	10-0577	Keso (Left)	1
	10-0578	Keso (Right)	1
	"L" Design		
	10-0501	Passage	1
	10-0502	Cylinder	1
	10-0503	Push Button/Emergency Button/30-Prefix	1
	10-0504	Removable Core	1
	10-0505	Interchangeable Core	1
	10-0506	Keso	1
	10-0512	Passage – Handicap	1
	10-0513	Cylinder – Handicap	1
	10-0514	Push Button/Emergency Button/30-Prefix – Handicap	1
	10-0515	Removable Core – Handicap	1
	10-0516	Interchangeable Core – Handicap	1
	10-0517	Keso – Handicap	1
	"P" Design		
	10-0545	Passage	1
	10-0546	Cylinder	1
	10-0547	Push Button/Emergency Button/30-Prefix	1
	10-0548	Removable Core	1
	10-0549	Interchangeable Core	1
	10-0550	Keso 1	1
	10-0556	Passage – Handicap	1
	10-0557	Cylinder – Handicap	1
	10-0558	Push Button/Emergency Button/30-Prefix – Handicap	1
	10-0559	Removable Core – Handicap	1
	10-0560	Interchangeable Core – Handicap	1
	10-0561	Keso – Handicap	1


ITEM	PART NO.	DESCRIPTION	QTY
	"Y" Design – Decorative (Coastal Series)		
	10-0611	Passage (Left)	1
	10-0612	Passage (Right)	1
	10-0613	Cylinder (Left)	1
	10-0614	Cylinder (Right)	1
	10-0615	Push Button/Emergency Button/30-Prefix (Left)	1
	10-0616	Push Button/Emergency Button/30-Prefix (Right)	1
	10-0617	Removable Core (Left)	1
	10-0618	Removable Core (Right)	1
	10-0619	Interchangeable Core (Left)	1
	10-0620	Interchangeable Core (Right)	1
	10-0621	Keso (Left)	1
	10-0622	Keso (Right)	1
2	07-0111*	Scalp "L" Design (Inside or Outside)	2
3		Self-Tapping Screw Pan-Head (#6 X 3/4") (01-4414)	4
4		Through-bolt screws (#8-32 x 2-1/8")	2
5	07-2425	Inside Rose Spring Assembly	1
6	Standard Cylinder/Non-Cylinder Lockbodies		
	07-2650	04 Function	1
	07-2660*	05 Function	1
	07-2670	15 Function	1
	07-2675	15-3 Function	1
	07-2680	37 Function	1
	07-2690*	65 & 68 Function (Emergency button must be ordered separately)	1
	07-2418	93 & 94-2 Function (Outside & inside- order two for a complete set)	1
	Removable Core Cylinder Lockbodies (60-, 63-, 64- Prefix Only)		
	07-2652	04 Function	1
	07-2662*	05 Function	1
	07-2682	37 Function	1
	Interchangeable Core Cylinder Lockbody (65-73-, 65-73-7P-, 70-, 72-, 73-, 73-7P- Prefix Only)		
	07-2653	04 Function	1
	07-2663*	05 Function	1
	07-2683	37 Function	1



PARTS LIST	
PAGE NO.	REV.
7.4	1-18-05

① See Screw Pack
for these items

7 Line Lever Lock (Locks manufactured after January 2005)
7G05 Function shown

ITEM	PART NO.	DESCRIPTION	QTY
6 (Cont.)			82-
	82- Prefix Lockbodies		
	07-2654	04 Function	1
	07-2664*	05 Function	1
	07-2684*	37 Function	1
	FW- Prefix Standard Cylinder Lockbody (10-,11-,21-,22-,SC-,SE-,VA-,V5- Only)		
	07-2651	04 Function	1
	07-2661*	05 Function	1
	07-2681	37 Function	1
	07-2691*	65 & 68 Functions (Emergency button must be ordered separately)	1
	FW- Prefix Removable Core Cylinder Lockbody (60-,63-,64- Only)		
	07-2655	04 Function	1
	07-2665*	05 Function	1
	07-2685	37 Function	1
	FW- Prefix Interchangeable Core Cylinder Lockbody (65-73,65-73-7P-,70-,72-,73-,73-7P- Only)		
	07-2656	04 Function	1
	07-2666*	05 Function	1
	07-2686	37 Function	1
	FW- Prefix Keso Cylinder Lockbody 80-, 82-, F1- Only)		
	07-2657	04 Function	1
	07-2667*	05 Function	1
	07-2687	37 Function	1
7	07-0100	Cardboard Spacer	1
8	07-0105	Support plate-outside	1
9	07-2426	Outside Rose Spring Assembly	1
	07-2428	15-3 Function Blank Rose	1
10	10-0019	Cylinder Spacer	1
11	10-0032	Cylinder Retainer – For Standard	2
	10-0058	Cylinder Retainer – For Removable Core/Interchangeable Core/Keso	2
12	13-3266*	Std. Cylinder – All Functions Except 50 Function	1
13		Keys (Specify per key system)	2
14	10-0043	Lever Retainer Push Pin	1
15	07-2430*	2-3/4" Backset (Deadlocking Latch)	1
	07-2432*	2-3/4" Backset (Latch)	1
	07-2431*	2-3/8" Backset (Deadlocking Latch, 20- Prefix)	1
	07-2433*	2-3/8" Backset (Latch, 20- Prefix)	1
16		Flat Head Standard (8-32 X 3/4") (01-5000)	4
	* 	Flat Head Standard (28 Prefix) (8-32 X 3/4") (10-2070)	2
		Flat Head (28 Prefix) (12-24 X 3/4") (01-5002)	2
17	08-0312*	Strike No. 600 (Part # does not include screws)	1
	08-0066*	Strike No. 808 (Prefix 28)	1
	05-0013*	Strike No. 505 (Prefix 14-)	1

ITEM	PART NO.	DESCRIPTION	QTY
18	08-0055	Strike Box – Standard	1
	77-1141	Strike Box – Optional for 28- Prefix	1

20	10-2052*	Screw Pack: Standard (Includes Item Numbers 3, 13, 15 and 17)	1
	10-2070*	Screw Pack (28 Prefix) (Includes Item Numbers 3, 13, and 15)	1
21	07-0270	Through-bolt screws	2
22	07-2492	Screw Packs for 10U93 Function Surface screws (2) and push pin	1
23	07-2492	Screw Pack for 10U94 Function Surface screws and push pin	2
24	08-2842*	Blank Front Plate Pack (94-2 Function)	1