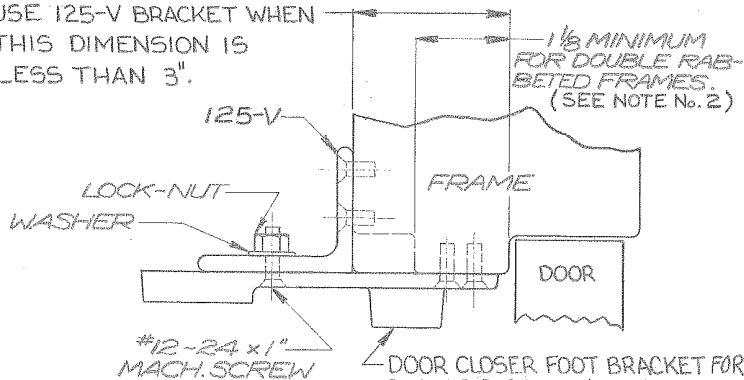


USE 125-V BRACKET WHEN THIS DIMENSION IS LESS THAN 3".



#12-24 x 5/8 FL. HD. MACH. SCREWS OR #12 x 1 1/2 FL. HD. WOOD SCREWS (4 REQ'D.)

CENTER ON MOUNTING SCREW HOLE IN CLOSER FOOT BRACKET.

125-V BRACKET

DOOR CLOSER FOOT BRACKET FOR PS, PSH, PED, PIO, CPS & CFSH ARMS. SEE DATA SHEETS LISTED BELOW FOR THE LOCATION OF THE BRACKET ON THE DOOR FRAME & THE SPACING OF MOUNTING SCREW HOLES

DOOR CLOSER	ARM TYPE	DATA SHEET
351 SERIES	PS & PSH	A6757
351 SERIES	P-10	A7357
1430 SERIES	PS & PSH	A7124
1430 SERIES	PED	A7123
281 SERIES	PS & PSH	A7243
281 SERIES	P-10	A7234

- ③ FOR P-10 ARM MOVE BRACKET MOUNTING SCREWS CLOSER TO FRAME FACE.
- ② SEE DATA SHEET A6523 WHEN FRAME HAS BLADE STOP.
- ① 12 GAUGE MIN. REINFORCEMENTS REQ'D. FOR METAL DOORS & FRAMES.

SARGENT & COMPANY

NEW HAVEN 9, CONN.

DATA SHEET:  
125-V BRACKET FOR  
NARROW DOOR FRAME

RELEASE DATE  
26 SEPT 97

TEMPLET NO.  
A6444 G