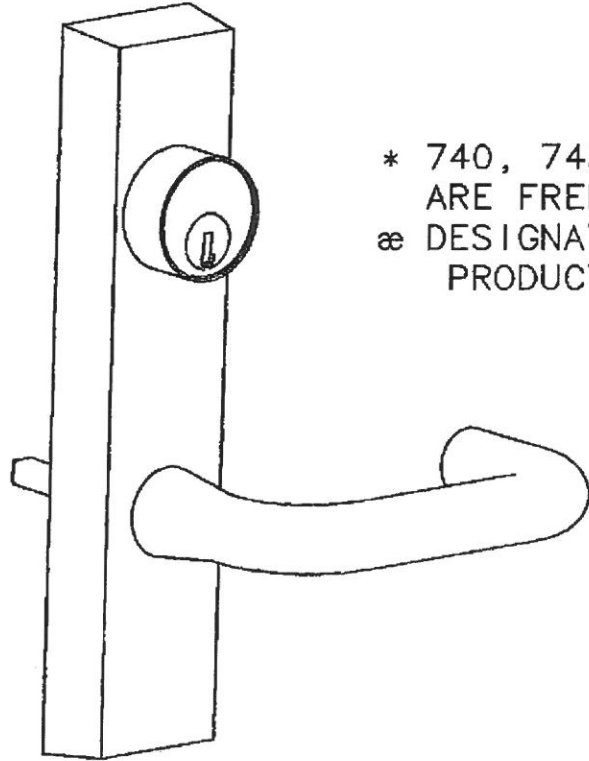


# 80 series Parts List

700 SERIES  
ET CONTROL

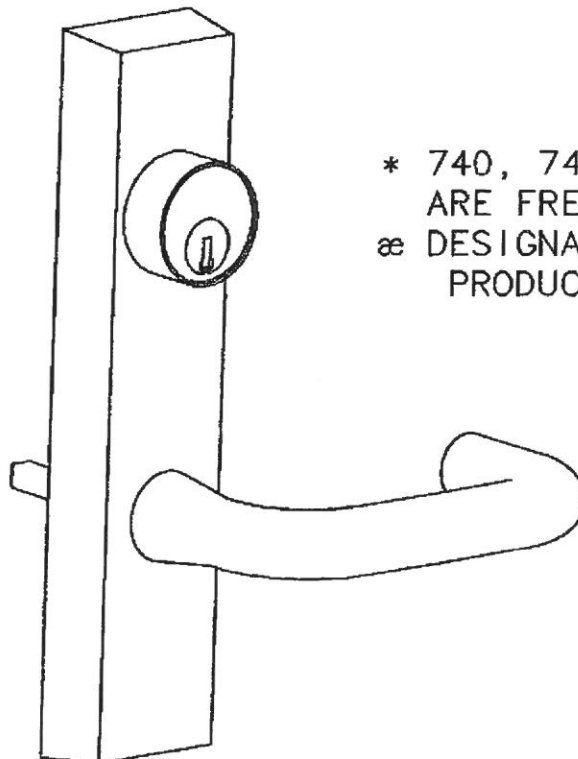
Parts List  
Page No 700.1A Rev F  
1/1/2002

FUNCTION	EXIT DEVICES					
	8300	8400, 12-MD8400	8500	8600æ	MD8600 WD8600	SP8600 PP8600 PR8600
04	704	—	704	—	—	—
	744 *	—	744 *	—	—	—
06	—	706-4	—	706-1æ	706-4	706-6
	—	746-4*	—	—	746-4*	746-6*
10	710	710-4	710	710	710-4	710-6
	740 *	740-4*	740 *	—	740-4*	740-6*
13	713	713-4	713-8	713-1æ	713-4	713-6
	743 *	743-4*	743-8*	—	743-4*	743-6*
15	715	715-4	715-8	715-1æ	715-4	715-6
16	—	—	—	—	—	—
73	—	773-4	773-8	773-1æ	773-4	773-6
74	—	774-4	774-8	774-1æ	774-4	774-6
75	775	—	—	—	—	—
76	776	—	—	—	—	—
77	—	—	—	—	—	—
78	—	—	—	—	—	—



\* 740, 743, 744 & 746  
ARE FREEWHEELING LEVERS  
æ DESIGNATES DISCONTINUED  
PRODUCTS

FUNCTION	EXIT DEVICES					
	LS8600 LP8600 LR8600	8700 HC8700	SP8700 PP8700 PR8700	8800	8888 HC8800	8900
04	—	—	—	704	704	704
	—	—	—	744 *	744 *	744 *
06	706-6	706	706-8	706-8	706-8	—
	746-6*	746 *	746-8*	746-8*	746-8*	—
10	710-6	710	710	710	710	710
	740-6*	740 *	740 *	740 *	740 *	740 *
13	713-6	713	713-8	713-8	713-8	713
	743-6*	743 *	743-8*	743-8*	743-8*	743 *
15	715-6	715	715-8	715-8	715-8	715
16	—	—	—	716	—	716
73	773-6	773	773-8	—	—	—
74	774-6	774	774-8	—	—	—
75	—	—	—	775-8	775-8	775
76	—	—	—	776-8	776-8	776
77	—	—	—	777-8	777-8	777
78	—	—	—	778-8	778-8	778



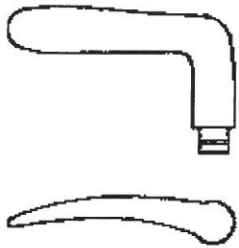
\* 740, 743, 744 & 746  
ARE FREEWHEELING LEVERS  
æ DESIGNATES DISCONTINUED  
PRODUCTS

80 series  
Parts List

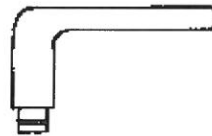
ET CONTROL  
LEVER STYLES

Parts List  
Page No 700.1-1  
Rev B  
3/22/02

NOTE: LEVERS LISTED ARE FOR USE WITH ET CONTROLS  
MANUFACTURED AFTER SEPTEMBER 25, 1998



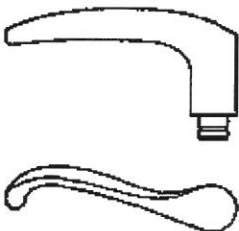
A LEVER 82-0151 (RH)  
82-0152 (LH)



E LEVER  
82-0154



F LEVER  
82-0155



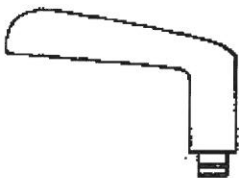
Y LEVER 82-0531 (RH)  
82-0530 (LH)



J LEVER  
97-0486



C LEVER  
97-0567



S LEVER 82-0523 (RH)  
82-0522 (LH)



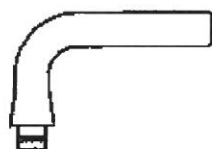
L LEVER  
97-0485



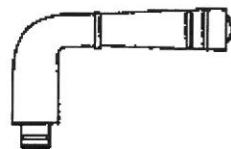
P LEVER  
97-0484



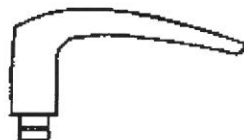
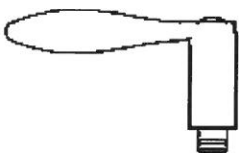
G LEVER 82-0527 (RH)  
82-0526 (LH)



W LEVER  
82-0159



R LEVER  
82-0517



B LEVER  
82-0153

# 80 series Parts List

700 SERIES  
ET LEVER  
CONTROL  
704 & 710

## Parts List

Page No 700.2 Rev F

7/1/2003

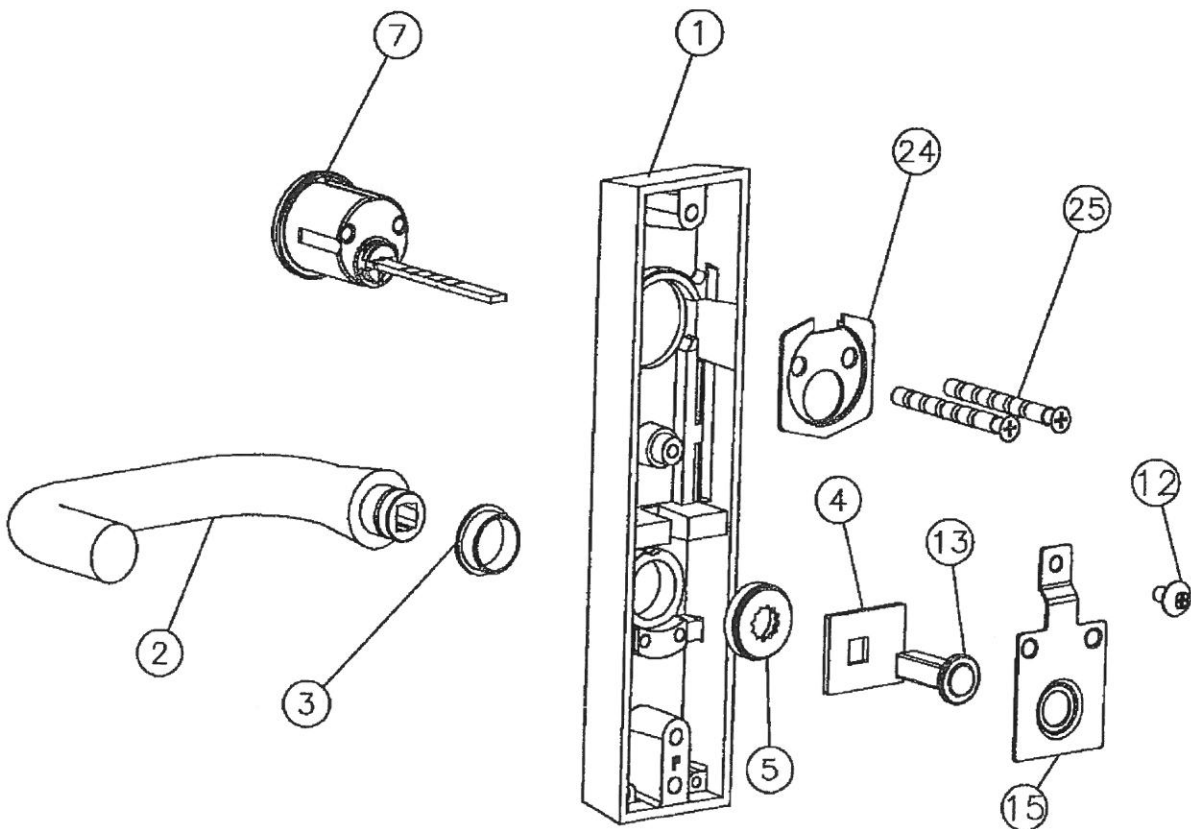
ITEM	PART NO.	DESCRIPTION	QTY
1	97-0427	CASE (704) *	1
	97-0429	CASE (710) *	
2	—	LEVER HANDLE * ±	1
3	97-0477	BUSHING INSERT	1
4	97-0522	LOWER HUB PLATE	1
5	82-0184	CAP NUT	1
7	—	CYLINDER (704 ONLY) * $\phi$	1
12	01-1183	MACHINE SCREW	1
13	97-0573	SPINDLE	1
15	68-1393	RETAINING CLIP	1
24	13-0086	BACKPLATE (704 ONLY)	1
25	13-0074	CONNECTING SCREW (704 ONLY)	2
	13-0075	CONNECTING SCREW (704 ONLY) (2 1/2 DOOR)	
	01-4451	THRU BOLT 1/4-20 x 2 3/8 (1 3/4 DOOR)	2
	01-4372	THRU BOLT 1/4-20 x 2 5/8 (2 DOOR)	
	01-4373	THRU BOLT 1/4-20 x 2 7/8 (2 1/4 DOOR)	

\* SPECIFY FINISH

$\phi$  SPECIFY #34  
CYLINDER BY  
KEYING  
REQUIREMENTS  
(FOR 8300 OR  
8900 SPECIFY  
#46 CYLINDER)

± SPECIFY LEVER  
DESIGN BY HAND

NOTE: CASE NOT  
AVAILABLE IN 32  
OR 32D



# 80 series Parts List

700 SERIES  
ET LEVER  
CONTROL  
710-4

## Parts List

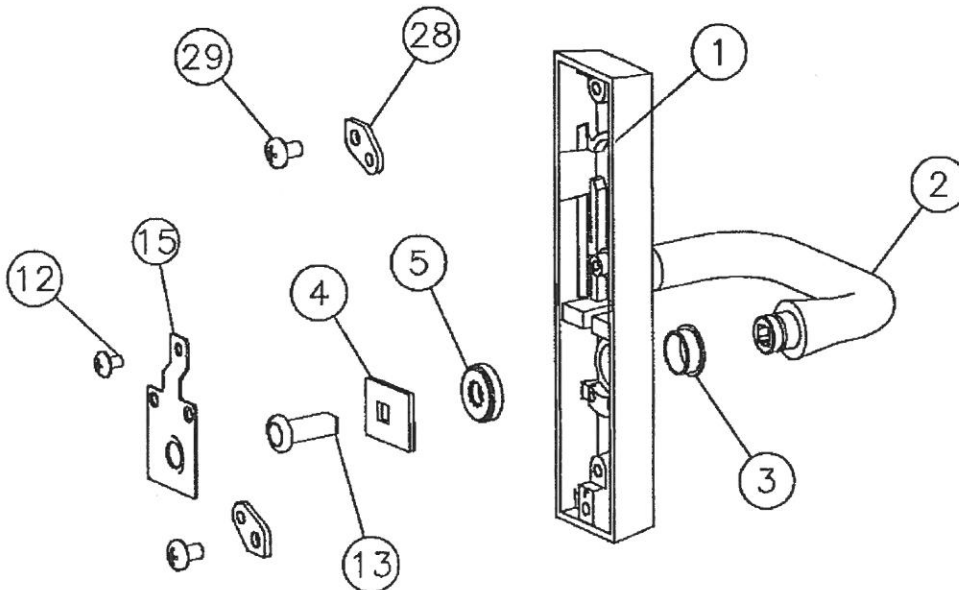
Page No    Rev  
700.3      E  
7/2/2003

ITEM	PART NO.	DESCRIPTION	QTY
1	97-0435	CASE *	1
2	—	LEVER HANDLE * ±	1
3	97-0477	BUSHING INSERT	1
4	97-0522	LOWER HUB PLATE	1
5	82-0184	CAP NUT	1
12	01-1183	MACHINE SCREW 10-32 x 5/16	1
13	97-0573	SPINDLE	1
15	68-1393	RETAINING PLATE	1
28	68-0853	BRACKET	2
29	01-1478	MACHINE SCREW 1/4-20 x 3/8	2
	01-4451	THRU BOLT 1/4-20 x 2 3/8 (1 3/4 DOOR)	2
	01-4372	THRU BOLT 1/4-20 x 2 5/8 (2 DOOR)	
	01-4373	THRU BOLT 1/4-20 x 2 7/8 (2 1/4 DOOR)	

\* SPECIFY FINISH

± SPECIFY LEVER DESIGN BY HAND

NOTE: CASE NOT AVAILABLE IN 32 OR 32D



# 80 series Parts List

700 SERIES  
ET LEVER  
CONTROL  
710-6

## Parts List

Page No Rev  
700.3-1 C

7/2/03

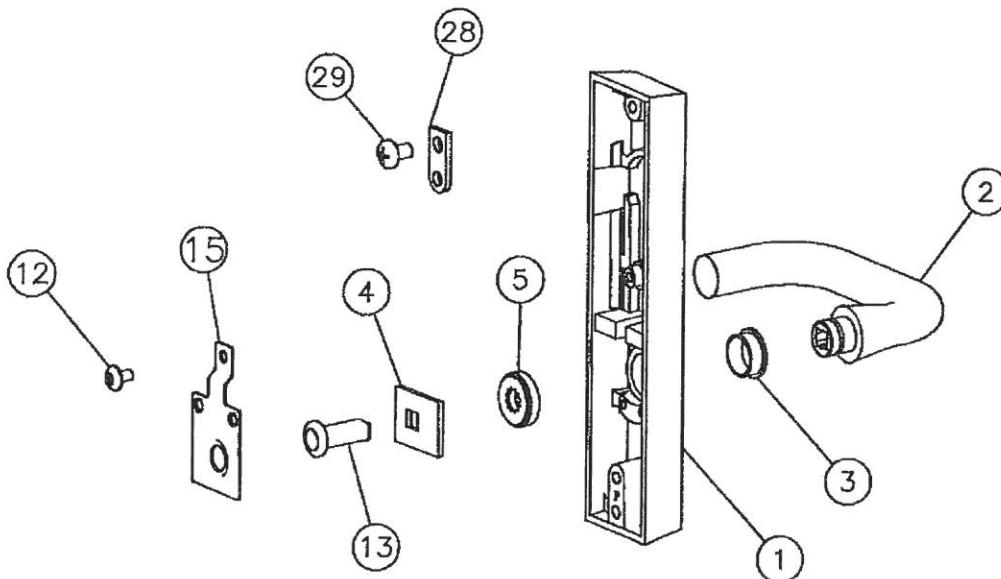
ITEM	PART NO.	DESCRIPTION	QTY
1	97-0523	CASE *	1
2	—	LEVER HANDLE * ±	1
3	97-0477	BUSHING INSERT	1
4	97-0522	HUB PLATE	1
5	82-0184	CAP NUT	1
12	01-1183	MACHINE SCREW 10-32 x 5/16	1
13	97-0573	SPINDLE	1
15	68-1393	RETAINING PLATE	1
28	68-1254	BRACKET	1
29	01-1478	MACHINE SCREW 1/4-20 x 3/8	1
	01-4451	THRU BOLT 1/4-20 x 2 3/8	2

\* SPECIFY FINISH

± SPECIFY LEVER DESIGN BY HAND

NOTE: CASE NOT AVAILABLE IN 32 OR 32D

NOTE: 700-6 ET CONTROL IS ONLY AVAILABLE  
FOR 1-3/4 DOORS



# 80 series Parts List

700 SERIES  
ET LEVER  
CONTROL  
706 & 713

## Parts List

Page No Rev  
700.4 F  
7/1/2003

ITEM	PART NO.	DESCRIPTION	QTY
1	—	CASE	1
2	—	LEVER HANDLE * ±	1
3	97-0477	BUSHING INSERT	1
4	97-0528	LOWER HUB PLATE	1
5	82-0184	CAP NUT	1
6	01-1182	CAP SCREW	1
7	—	CYLINDER ASSEMBLY * ø	1
8	97-0350	COLLAR *	1
9	13-0180	CYLINDER NUT	1
10	607-2	LOCKING SLIDE REPLACEMENT KIT (706)	1
	607-1	LOCKING SLIDE REPLACEMENT KIT (713)	
12	01-1183	MACHINE SCREW #10-32 x 5/16	1
13	730-1	SPINDLE RETROFIT KIT (1 3/4" DOOR)	1
	730-2	SPINDLE RETROFIT KIT (2" DOOR)	
	730-3	SPINDLE RETROFIT KIT (2 1/4" DOOR)	
18	01-4507	GROOV PIN	2
19	97-0425	HUB SPRING (ALL OTHER LEVERS)	1
	97-0586	HUB SPRING (J LEVER ONLY)	
20	97-0557	FUSIBLE LINK	1
	01-4451	THRU BOLT 1/4-20 x 2 3/8 (1 3/4 DOOR)	2
	01-4372	THRU BOLT 1/4-20 x 2 5/8 (2 DOOR)	
	01-4373	THRU BOLT 1/4-20 x 2 7/8 (2 1/4 DOOR)	

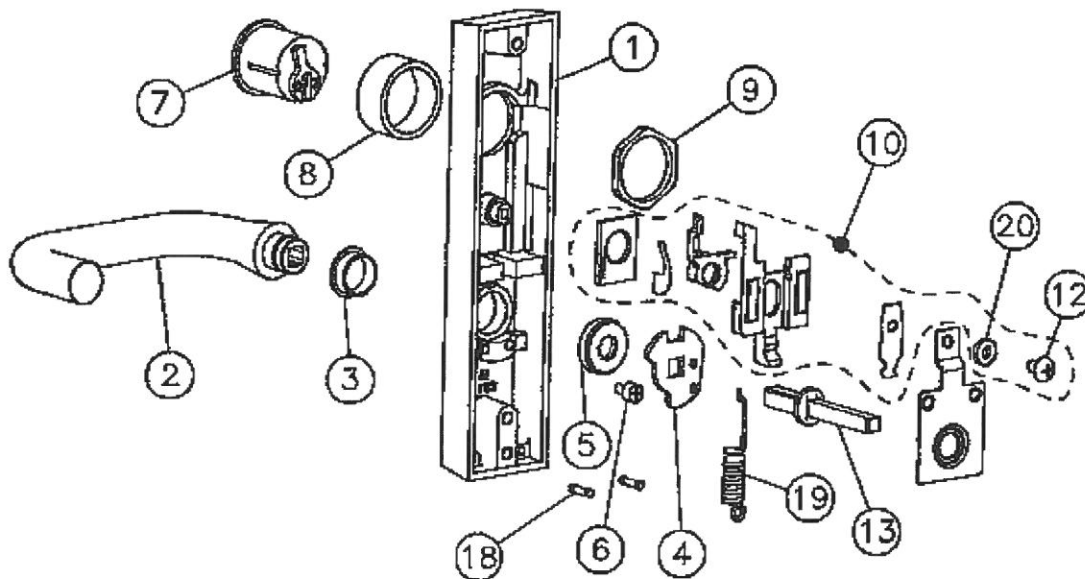
\* SPECIFY FINISH

ø SPECIFY #41 CYLINDER  
BY KEYING REQUIREMENTS

± SPECIFY LEVER DESIGN  
BY HAND

NOTE: 607 KIT CONTAINS  
ALL PARTS NEEDED TO  
REPLACE LOCKING SLIDE.

NOTE: 730 KIT INCLUDES  
ITEMS 4, 12, 19, 20  
AND THRU BOLTS FOR  
SPECIFIED DOOR THICKNESS.



# 80 series Parts List

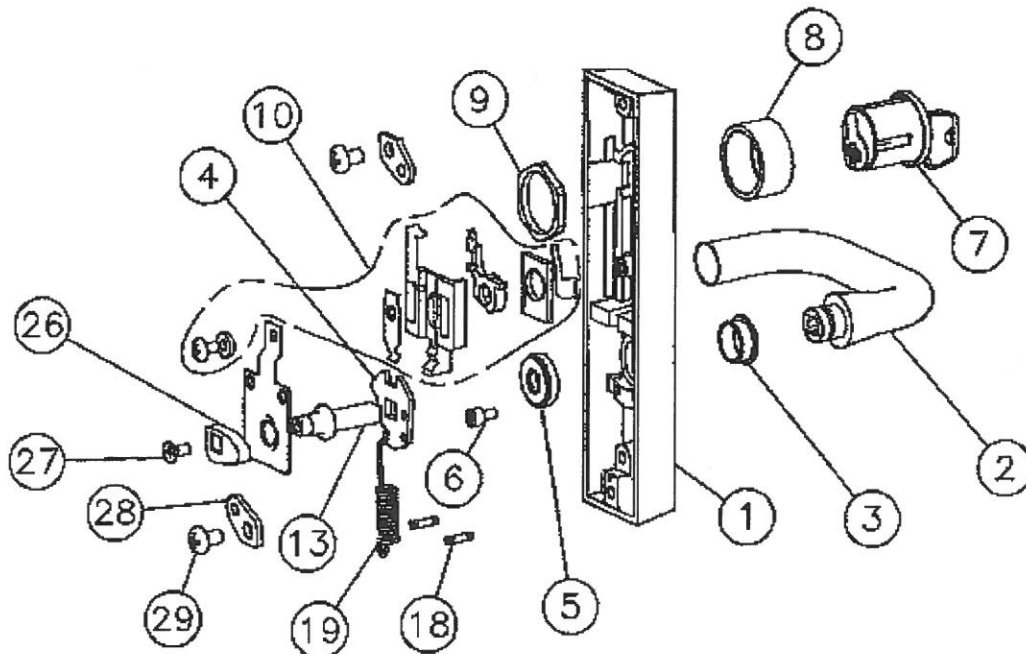
700 SERIES  
ET LEVER  
CONTROL  
706-4 & 713-4

## Parts List

Page No 700.5 Rev E  
1/1/2002

ITEM	PART NO.	DESCRIPTION	QTY
1	—	CASE	1
2	—	LEVER HANDLE * ±	1
3	97-0477	BUSHING INSERT	1
4	97-0528	LOWER HUB PLATE	1
5	82-0184	CAP NUT	1
6	01-1182	CAP SCREW	1
7	—	CYLINDER ASSEMBLY * ∅	1
8	97-0350	COLLAR *	1
9	13-0180	CYLINDER NUT	1
10	607-2	LOCKING SLIDE REPLACEMENT KIT (706)	1
	607-1	LOCKING SLIDE REPLACEMENT KIT (713)	
13	730-4	RETROFIT KIT (1 3/4 DOOR)	1
	730-5	RETROFIT KIT (2 DOOR)	
	730-6	RETROFIT KIT (2 1/4 DOOR)	
18	01-4507	GROOV PIN	2
19	97-0425	HUB SPRING (ALL OTHER LEVERS)	1
	97-0566	HUB SPRING (J LEVER ONLY)	
21	97-0347	LOCKING SLIDE SPRING	1
26	68-0852	CAM	1
27	01-1027	MACHINE SCREW 10-24 x 3/8	1
28	68-0853	BRACKET	2
29	01-1478	MACHINE SCREW 1/4-20 x 3/8	2
	01-4451	THRU BOLT 1/4-20 x 2 3/8 (1 3/4 DOOR)	2
	01-4372	THRU BOLT 1/4-20 x 2 5/8 (2 DOOR)	
	01-4373	THRU BOLT 1/4-20 x 2 7/8 (2 1/4 DOOR)	

\* SPECIFY FINISH  
∅ SPECIFY #41 CYLINDER  
BY KEYING REQUIREMENTS  
± SPECIFY LEVER DESIGN  
BY HAND  
NOTE: 607 KIT CONTAINS  
ALL PARTS NEEDED TO  
REPLACE LOCKING SLIDE.  
NOTE: 730 KIT INCLUDES  
ALL PARTS NEEDED TO  
REPLACE SPINDLE  
AND APPROPRIATE THRU  
BOLT KIT.





# 80 series Parts List

700 SERIES  
ET LEVER  
CONTROL  
706-8 & 713-8

## Parts List

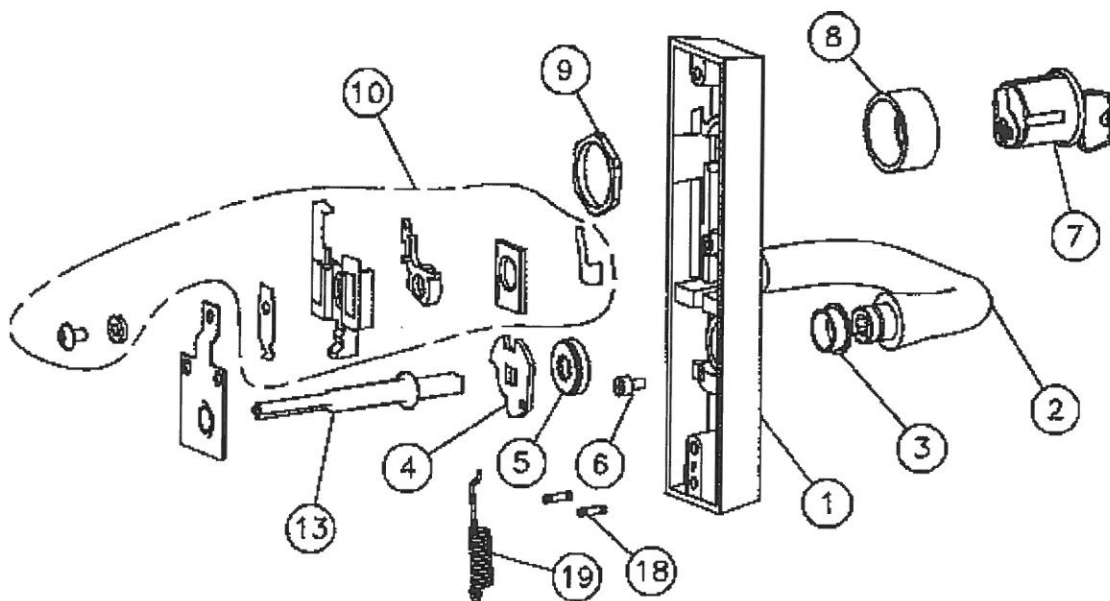
Page No Rev  
700.6 E  
5/29/2002

ITEM	PART NO.	DESCRIPTION	QTY
1	—	CASE	1
2	—	LEVER HANDLE * ±	1
3	97-0477	BUSHING INSERT	1
4	97-0480	LOWER HUB PLATE	1
5	82-0184	CAP NUT	1
6	01-1182	CAP SCREW	1
7	—	CYLINDER ASSEMBLY * ∅	1
8	97-0350	COLLAR *	1
9	13-0180	CYLINDER NUT	1
10	607-2	LOCKING SLIDE KIT (706)	1
	607-1	LOCKING SLIDE KIT (713)	
13	730-7	SPINDLE KIT (1 3/4" DOOR)	1
	730-8	SPINDLE KIT (2" DOOR)	
	730-9	SPINDLE KIT (2 1/4" DOOR)	
18	01-4507	GROOV PIN	2
19	97-0425	HUB SPRING (ALL OTHER LEVERS)	1
	97-0586	HUB SPRING (J LEVER ONLY)	
	01-4451	THRU BOLT 1/4-20 x 2 3/8 (1 3/4 DOOR)	2
	01-4372	THRU BOLT 1/4-20 x 2 5/8 (2 DOOR)	
	01-4373	THRU BOLT 1/4-20 x 2 7/8 (2 1/4 DOOR)	

\* SPECIFY FINISH  
∅ SPECIFY #41 CYLINDER  
BY KEYING REQUIREMENTS  
± SPECIFY LEVER DESIGN  
BY HAND

NOTE: 607 KIT CONTAINS ALL  
PARTS NEEDED TO REPLACE  
LOCKING SLIDE

NOTE: 730 KIT INCLUDES  
ITEMS 4, 19, RETAINING  
PLATE, SCREW, AND  
THRUBOLTS FOR SPECIFIED  
DOOR THICKNESS



# 80 series Parts List

700 SERIES  
ET LEVER  
CONTROL  
706-6 & 713-6

## Parts List

Page No Rev  
700.6-1 E  
1/1/2002

ITEM	PART NO.	DESCRIPTION	QTY
1	—	CASE	1
2	—	LEVER HANDLE * ±	1
3	97-0477	BUSHING INSERT	1
5	82-0184	CAP NUT	1
6	01-1182	CAP SCREW	1
7	—	CYLINDER ASSEMBLY * ∅	1
8	97-0350	COLLAR *	1
9	13-0180	CYLINDER NUT	1
10	607-2	LOCKING SLIDE REPLACEMENT KIT (706)	1
	607-1	LOCKING SLIDE REPLACEMENT KIT (713)	
12	01-1183	MACHINE SCREW #10-32 x 5/16*	1
13	730-1	SPINDLE RETROFIT KIT (1 3/4 DOOR)	1
14	97-0480	LOWER HUB PLATE	1
18	01-4507	GROOV PIN	2
19	97-0425	HUB SPRING (ALL OTHER LEVERS)	1
	97-0566	HUB SPRING (J LEVER ONLY)	
20	97-0557	FUSIBLE LINK	1
21	97-0347	LOCKING SLIDE SPRING	1
28	68-1254	BRACKET	1
29	01-1478	MACHINE SCREW 1/4-20 x 3/8	1
	01-4451	THRU BOLT 1/4-20 x 2 3/8 (1 3/4 DOOR)	2

\* SPECIFY FINISH

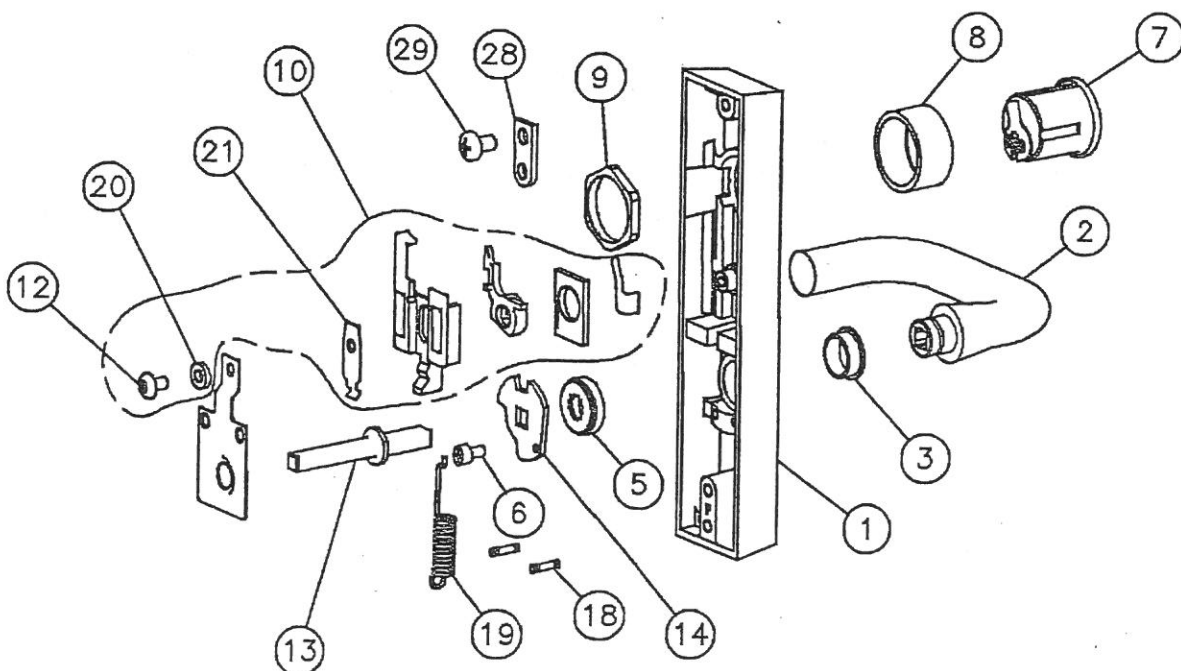
∅ SPECIFY #41 CYLINDER  
BY KEYING REQUIREMENTS

± SPECIFY LEVER DESIGN BY  
HAND

NOTE: 700-6 ET CONTROL  
IS ONLY AVAILABLE FOR  
1-3/4 DOORS

NOTE: 730 KIT INCLUDES  
ITEMS 12, 14, 19,  
20 AND THRU BOLTS  
01-4451

NOTE: 607 KIT INCLUDES ALL  
PARTS NEEDED TO REPLACE  
THE LOCKING SLIDE.



80 series  
Parts List

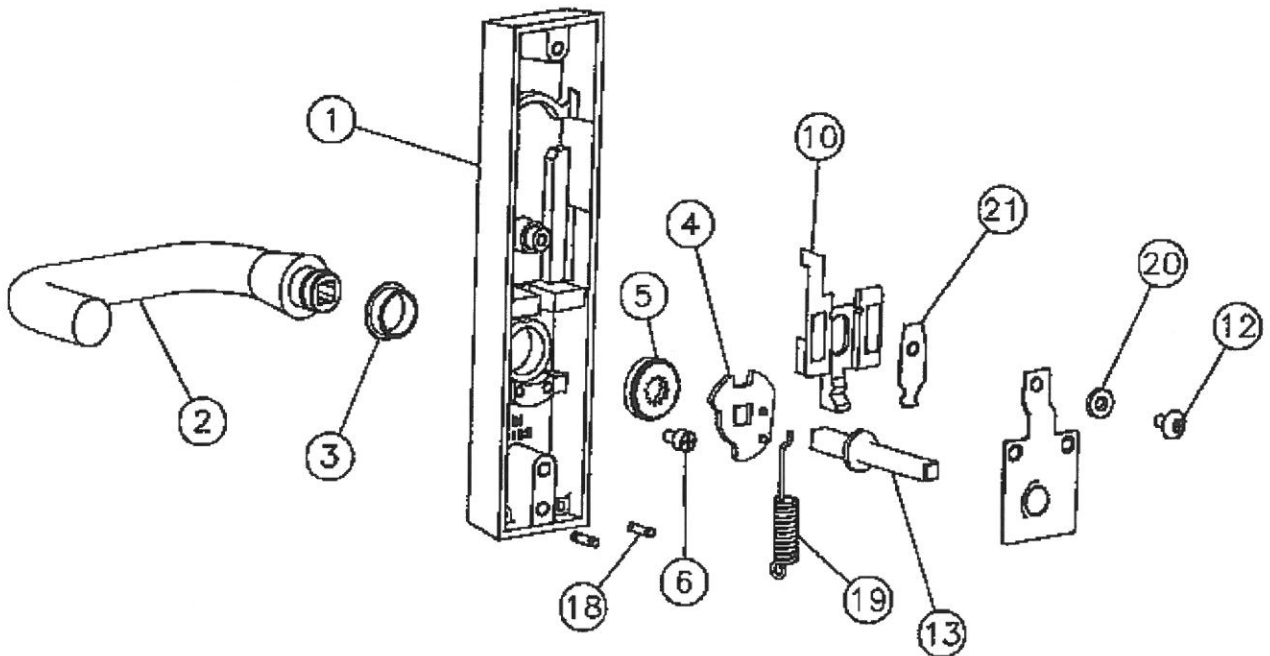
700 SERIES  
ET LEVER  
CONTROL  
715

Parts List  
Page No Rev  
700.7 F  
5/29/2002

ITEM	PART NO.	DESCRIPTION	QTY
1	—	CASE	1
2	—	LEVER HANDLE * ±	1
3	97-0477	BUSHING INSERT	1
4	97-0528	LOWER HUB PLATE	1
5	82-0184	CAP NUT	1
6	01-1182	CAP SCREW	1
10	97-0355	LOCKING SLIDE	1
12	01-1183	MACHINE SCREW 10-32 x 5/16	1
13	730-1	SPINDLE RETROFIT KIT (1 3/4 DOOR)	1
	730-2	SPINDLE RETROFIT KIT (2 DOOR)	
	730-3	SPINDLE RETROFIT KIT (2 1/4 DOOR)	
18	01-4507	GROOV PIN	2
19	97-0425	HUB SPRING (ALL OTHER LEVERS)	1
	97-0566	HUB SPRING (J LEVER ONLY)	
20	97-0557	FUSIBLE LINK	1
21	97-0571	LOCKING SLIDE SPRING	1
	01-4451	THRU BOLT 1/4-20 x 2 3/8 (1 3/4 DOOR)	2
	01-4372	THRU BOLT 1/4-20 x 2 5/8 (2 DOOR)	
	01-4373	THRU BOLT 1/4-20 x 2 7/8 (2 1/4 DOOR)	

\* SPECIFY FINISH  
± SPECIFY LEVER DESIGN  
BY HAND

NOTE: 730 KIT INCLUDES  
ITEMS 4, 12, 19, 20 AND  
THRUBOLTS FOR SPECIFIED  
DOOR THICKNESS.



# 80 series Parts List

700 SERIES  
ET LEVER  
CONTROL  
715-4

## Parts List

Page No 700.8  
Rev F  
5/29/2002

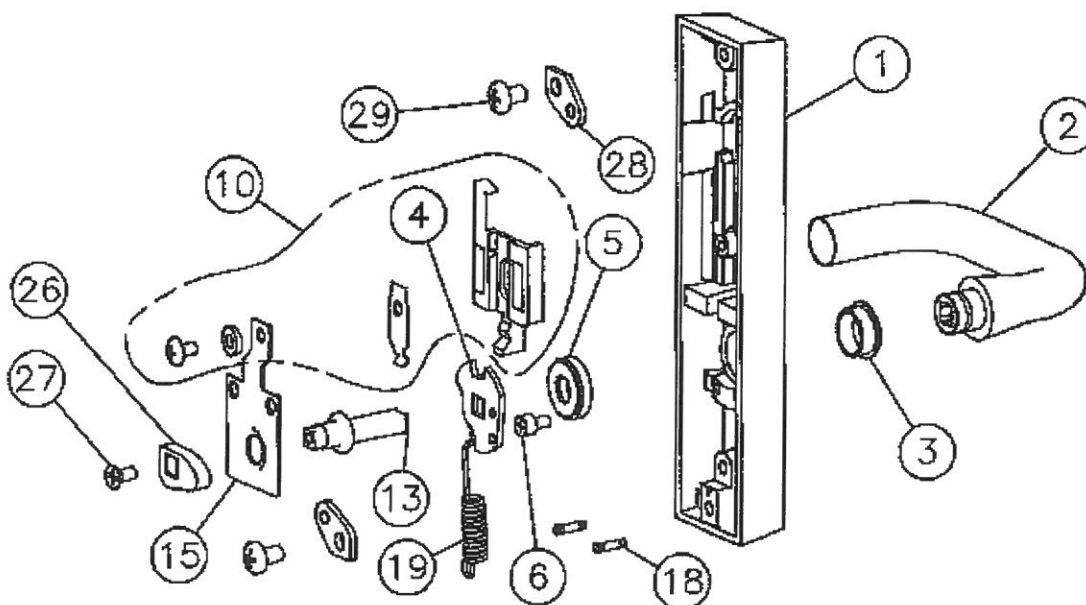
ITEM	PART NO.	DESCRIPTION	QTY
1	—	CASE	1
2	—	LEVER HANDLE * ±	1
3	97-0477	BUSHING INSERT	1
4	97-0528	LOWER HUB PLATE	1
5	82-0184	CAP NUT	1
6	01-1182	CAP SCREW	1
10	706-1	LOCKING SLIDE KIT	1
13	730-4	RETROFIT KIT (1 3/4 DOOR)	1
	730-5	RETROFIT KIT (2 DOOR)	
	730-6	RETROFIT KIT (2 1/4 DOOR)	
15	68-1393	RETAINING PLATE	1
18	01-4507	GROOV PIN	2
19	97-0425	HUB SPRING (ALL OTHER LEVERS)	1
	97-0566	HUB SPRING (J LEVER ONLY)	
21	97-0571	LOCKING SLIDE SPRING	1
26	68-0852	CAM	1
27	01-1027	MACHINE SCREW 10-24 x 3/8	1
28	68-0853	BRACKET	2
29	01-1478	MACHINE SCREW 1/4-20 x 3/8	2
	01-4451	THRU BOLT 1/4-20 x 2 3/8 (1 3/4 DOOR)	2
	01-4372	THRU BOLT 1/4-20 x 2 5/8 (2 DOOR)	
	01-4373	THRU BOLT 1/4-20 x 2 7/8 (2 1/4 DOOR)	

\* SPECIFY FINISH

± SPECIFY LEVER DESIGN  
BY HAND

NOTE: 706 KIT INCLUDES  
ALL PARTS NEEDED TO  
REPLACE LOCKING  
SLIDE

NOTE: 730 KIT INCLUDES  
ALL PARTS NEEDED TO  
REPLACE SPINDLE  
AND APPROPRIATE THRU  
BOLT KIT



# 80 series Parts List

700 SERIES  
ET LEVER  
CONTROL  
715-8

## Parts List

Page No 700,9  
Rev E  
5/29/2002

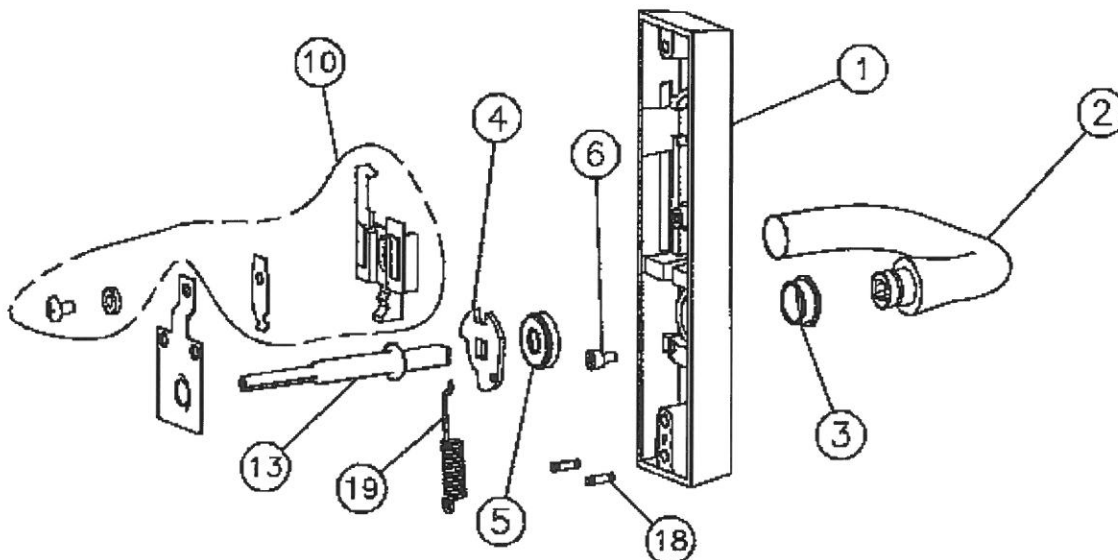
ITEM	PART NO.	DESCRIPTION	QTY
1	—	CASE	1
2	—	LEVER HANDLE * ±	1
3	97-0477	BUSHING INSERT	1
4	97-0480	LOWER HUB PLATE	1
5	82-0184	CAP NUT	1
6	01-1182	CAP SCREW	1
10	607-1	LOCKING SLIDE KIT	1
13	730-7	SPINDLE KIT (1 3/4" DOOR)	1
	730-8	SPINDLE KIT (2" DOOR)	
	730-9	SPINDLE KIT (2 1/4" DOOR)	
18	01-4507	GROOV PIN	2
19	97-0425	HUB SPRING (ALL OTER LEVERS)	1
	97-0566	HUB SPRING (J LEVER ONLY)	
	01-4451	THRU BOLT 1/4-20 x 2 3/8 (1 3/4 DOOR)	2
	01-4372	THRU BOLT 1/4-20 x 2 5/8 (2 DOOR)	
	01-4373	THRU BOLT 1/4-20 x 2 7/8 (2 1/4 DOOR)	

\* SPECIFY FINISH

± SPECIFY LEVER DESIGN BY HAND

NOTE: 607 KIT CONTAINS ALL PARTS NEEDED  
TO REPLACE LOCKING SLIDE

NOTE: 730 KIT CONTAINS ALL PARTS NEEDED  
TO REPLACE SPINDLE INCLUDING THRU BOLTS  
FOR SPECIFIED DOOR THICKNESS



# 80 series Parts List

700 SERIES  
ET LEVER  
CONTROL  
715-6

## Parts List

Page No Rev  
700.9-1 F  
5/29/2002

ITEM	PART NO.	DESCRIPTION	QTY
1	—	CASE	1
2	—	LEVER HANDLE * ±	1
3	97-0477	BUSHING INSERT	1
5	82-0184	CAP NUT	1
6	01-1182	CAP SCREW	1
10	607-1	LOCKING SLIDE KIT	1
12	01-1183	MACHINE SCREW #10-32 x 5/16"	1
13	730-1	SPINDLE RETROFIT KIT (1 3/4" DOOR)	1
14	97-0480	LOWER HUB PLATE	1
18	01-4507	GROOV PIN	2
19	97-0425	HUB SPRING (ALL OTHER LEVERS)	1
	97-0566	HUB SPRING (J LEVER ONLY)	
20	97-0557	FUSIBLE LINK	1
28	68-1254	BRACKET	1
29	01-1478	MACHINE SCREW 1/4-20 x 3/8	1
	01-4451	THRU BOLT 1/4-20 x 2 3/8 (1 3/4 DOOR)	2

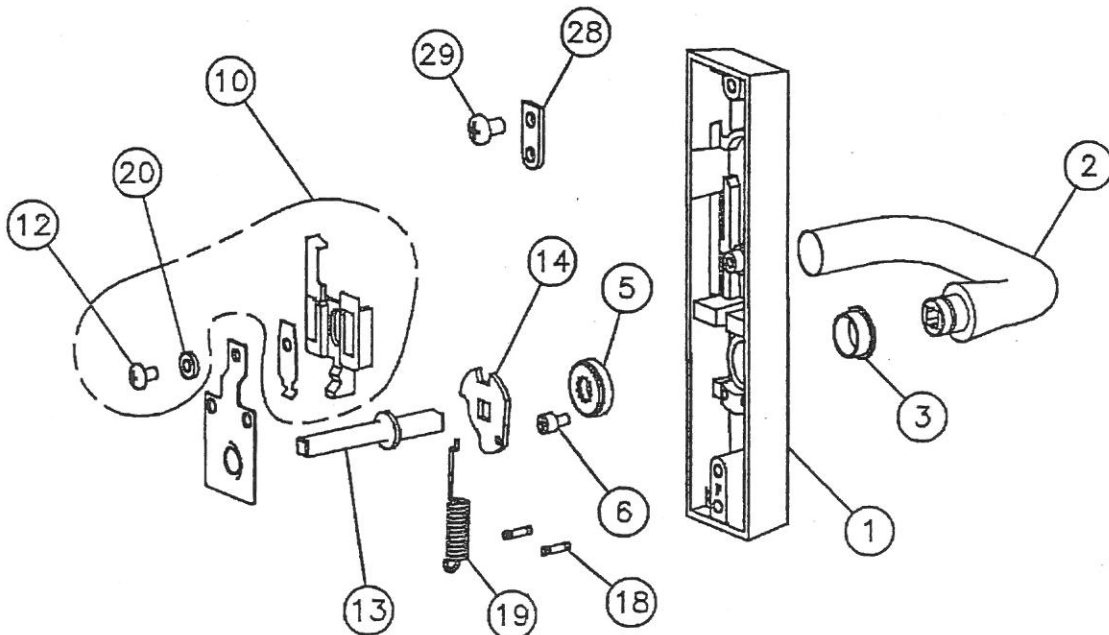
\* SPECIFY FINISH

± SPECIFY LEVER DESIGN  
BY HAND

NOTE: 700-6 ET CONTROL  
IS ONLY AVAILABLE  
FOR 1-3/4 DOORS

NOTE: 607 KIT INCLUDES  
ALL PARTS NEEDED TO  
REPLACE LOCKING SLIDE

NOTE: 730 KIT INCLUDES  
ITEMS 12, 14, 19, 20  
AND THRU BOLTS 01-4451



# 80 series Parts List

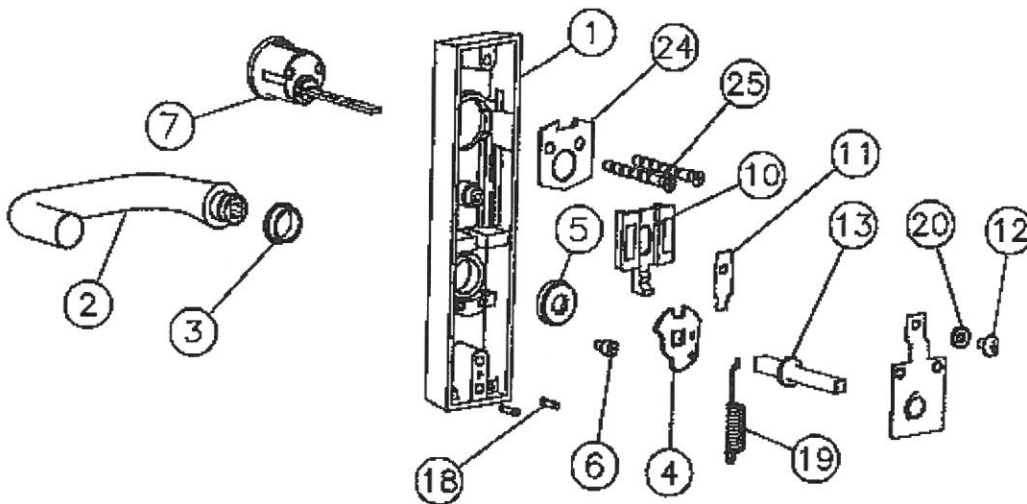
700 SERIES  
ET LEVER  
CONTROL  
716

## Parts List

Page No Rev  
700.10 F  
5/29/2002

ITEM	PART NO.	DESCRIPTION	QTY
1	—	CASE	1
2	—	LEVER HANDLE * ±	1
3	97-0477	BUSHING INSERT	1
4	97-0528	HUB PLATE	1
5	82-0184	CAP NUT	1
6	01-1182	CAP SCREW	1
7	—	CYLINDER * ø	1
10	97-0439	LOCKING SLIDE	1
11	97-0571	LOCKING SLIDE SPRING	1
12	01-1183	MACHINE SCREW #10-32 x 5/16	1
13	730-1	SPINDLE RETROFIT KIT (1 3/4 DOOR)	1
	730-2	SPINDLE RETROFIT KIT (2 DOOR)	
	730-3	SPINDLE RETROFIT KIT (2 1/4 DOOR)	
18	01-4507	GROOV PIN	2
19	97-0425	HUB SPRING (ALL OTHER LEVERS)	1
	97-0566	HUB SPRING (J LEVER ONLY)	
20	97-0557	FUSIBLE LINK	1
24	13-0086	BACKPLATE (8816 ONLY)	
25	13-0074	CONNECTING SCREW (8816 ONLY)	2
	13-0075	CONNECTING SCREW (8816 ONLY) (2 1/2 DOOR AND OVER)	
	01-4451	THRU BOLT 1/4-20 x 2 3/8 (1 3/4 DOOR)	2
	01-4372	THRU BOLT 1/4-20 x 2 5/8 (2 DOOR)	
	01-4373	THRU BOLT 1/4-20 x 2 7/8 (2 1/4 DOOR)	

\* SPECIFY FINISH  
ø SPECIFY CYLINDER SIZE\*\*  
BY KEYING REQUIREMENTS  
\*\* #34 CYLINDER FOR 8816  
#46 MORTISE CYLINDER  
FOR 8916 AND 9916  
± SPECIFY LEVER DESIGN BY  
HAND  
NOTE: 730 KIT INCLUDES  
ITEMS 4, 12, 19, 20 AND  
THRU BOLTS FOR DOOR  
THICKNESS SPECIFIED.



# 80 series Parts List

700 SERIES  
FREEWHEELING  
ET  
740 & 744

## Parts List

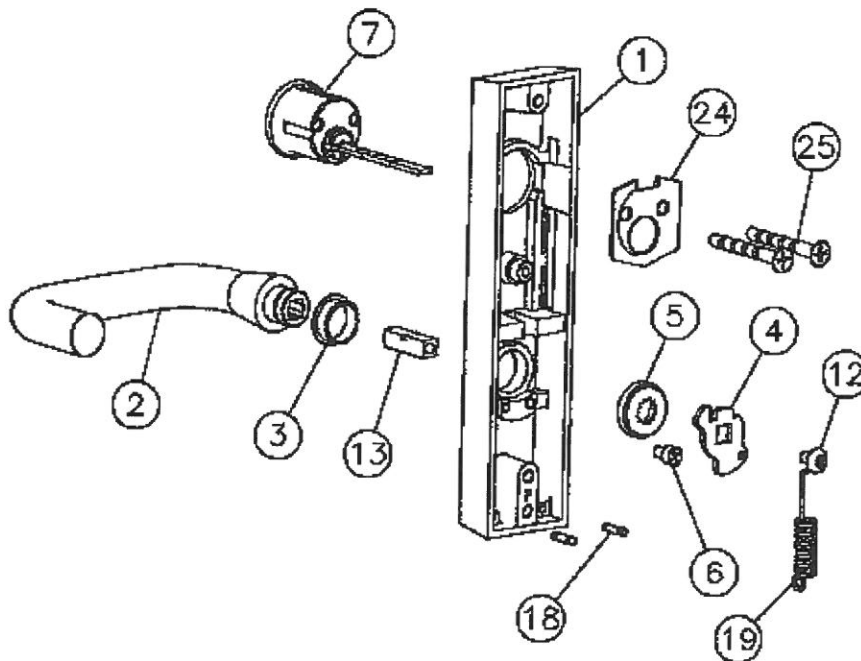
Page No 700.11  
Rev D  
1/1/2002

ITEM	PART NO.	DESCRIPTION	QTY
1	—	CASE	1
2	—	LEVER HANDLE * ±	1
3	97-0477	BUSHING INSERT	1
4	97-0478	LOWER HUB PLATE	1
5	82-0184	CAP NUT	1
6	01-1182	CAP SCREW	1
7	—	RIM CYLINDER (744 ONLY) * $\phi$	1
12	01-1183	MACHINE SCREW 10-32 x 5/16	1
13	97-0482	SPINDLE	1
18	01-4507	GROOV PIN	2
19	97-0425	HUB SPRING (ALL OTHER LEVERS)	1
	97-0566	HUB SPRING (J LEVER ONLY)	
24	13-0086	BACKPLATE (744 ONLY)	1
25	13-0074	CONNECTING SCREW (744 ONLY)	2
	13-0075	CONNECTING SCREW (744 ONLY) (2 1/2 DOOR AND OVER)	
	01-4451	THRU BOLT 1/4-20 x 2 3/8 (1 3/4 DOOR)	2
	01-4372	THRU BOLT 1/4-20 x 2 5/8 (2 DOOR)	
	01-4373	THRU BOLT 1/4-20 x 2 7/8 (2 1/4 DOOR)	

\* SPECIFY FINISH

$\phi$  SPECIFY #34 CYLINDER  
(#46 CYLINDER FOR  
8300 OR 8900)  
BY KEYING  
REQUIREMENTS

± SPECIFY LEVER DESIGN  
BY HAND





# 80 series Parts List

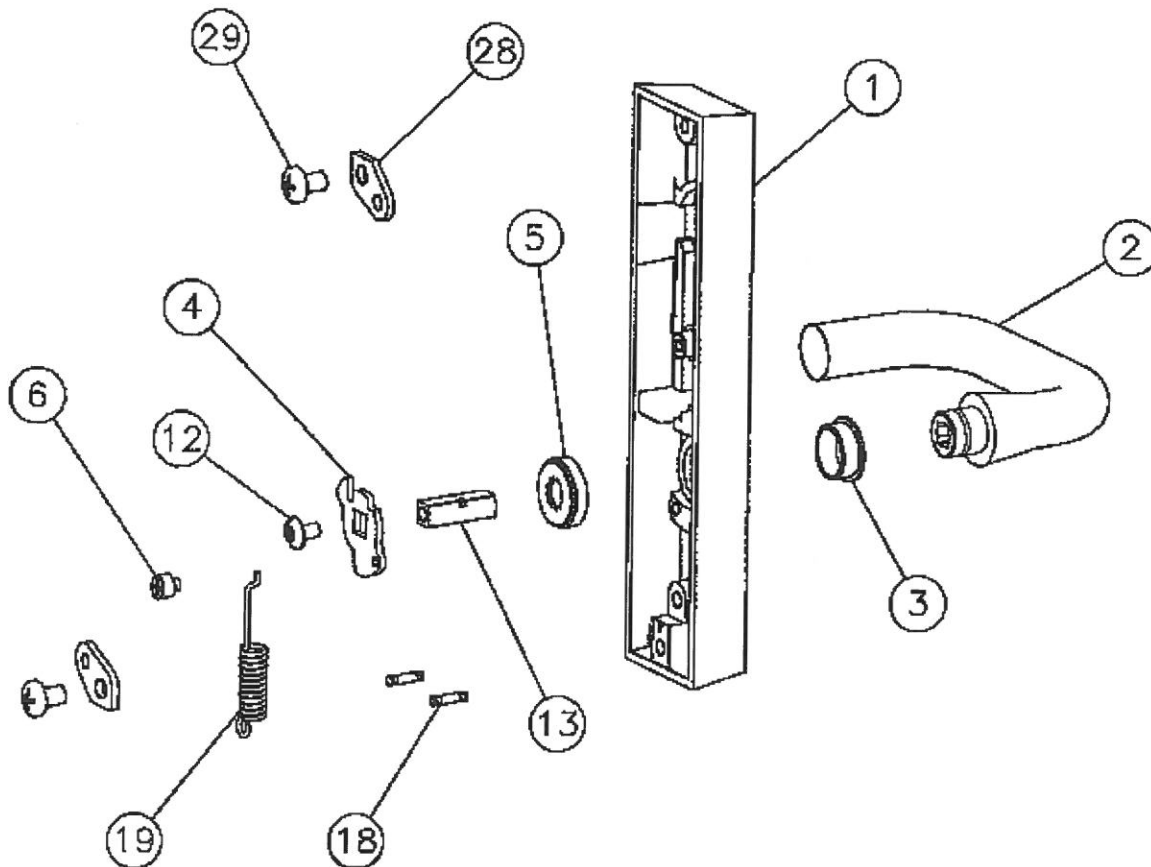
700 SERIES  
FREEWHEELING  
ET  
740-4

## Parts List

Page No Rev  
700.12 C  
1/1/2002

ITEM	PART NO.	DESCRIPTION	QTY
1	—	CASE *	1
2	—	LEVER HANDLE * ±	1
3	97-0477	BUSHING INSERT	1
4	97-0478	LOWER HUB PLATE	1
5	82-0184	CAP NUT	1
6	01-1182	CAP SCREW	1
12	01-1183	MACHINE SCREW 10-32 x 5/16	1
13	97-0482	SPINDLE	1
18	01-4507	GROOV PIN	2
19	97-0425	HUB SPRING (ALL OTHER LEVERS)	1
	97-0566	HUB SPRING (J LEVER ONLY)	
28	68-0853	BRACKET	2
29	01-1478	MACHINE SCREW 1/4-20 x 3/8	2
	01-4451	THRU BOLT 1/4-20 x 2 3/8 (1 3/4 DOOR)	
	01-4372	THRU BOLT 1/4-20 x 2 5/8 (2 DOOR)	
	01-4373	THRU BOLT 1/4-20 x 2 7/8 (2 1/4 DOOR)	

\* SPECIFY FINISH  
± SPECIFY LEVER DESIGN  
BY HAND



# 80 series Parts List

700 SERIES  
FREEWHEELING  
ET  
740-6

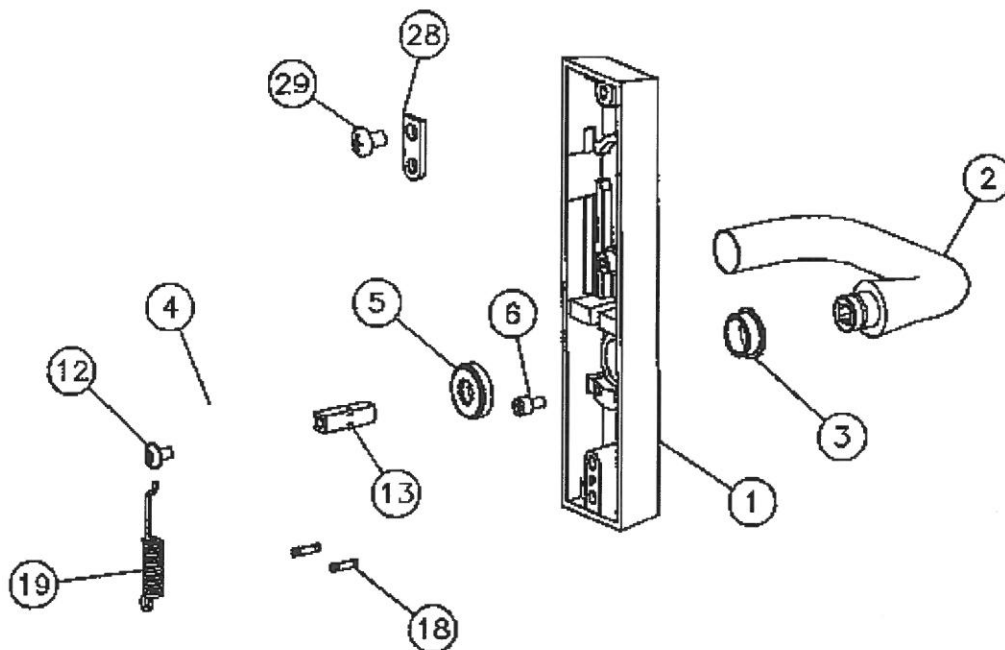
## Parts List

Page No Rev  
700.12-1 C  
1/1/2002

ITEM	PART NO.	DESCRIPTION	QTY
1	—	CASE	1
2	—	LEVER HANDLE * ±	1
3	97-0477	BUSHING INSERT	1
4	97-0478	LOWER HUB PLATE	1
5	82-0184	CAP NUT	1
6	01-1182	CAP SCREW	1
12	01-1183	MACHINE SCREW 10-32 x 5/16	1
13	97-0482	SPINDLE	1
18	01-4507	GROOV PIN	2
19	97-0425	HUB SPRING (ALL OTHER LEVERS)	1
	97-0586	HUB SPRING (J LEVER ONLY)	
28	68-1254	BRACKET	1
29	10-1478	MACHINE SCREW 1/4-20 x 3/8	1
	01-4451	THRU BOLT 1/4-20 x 2 3/8 (1 3/4 DOOR)	2

\* SPECIFY FINISH

± SPECIFY LEVER DESIGN BY HAND



# 80 series Parts List

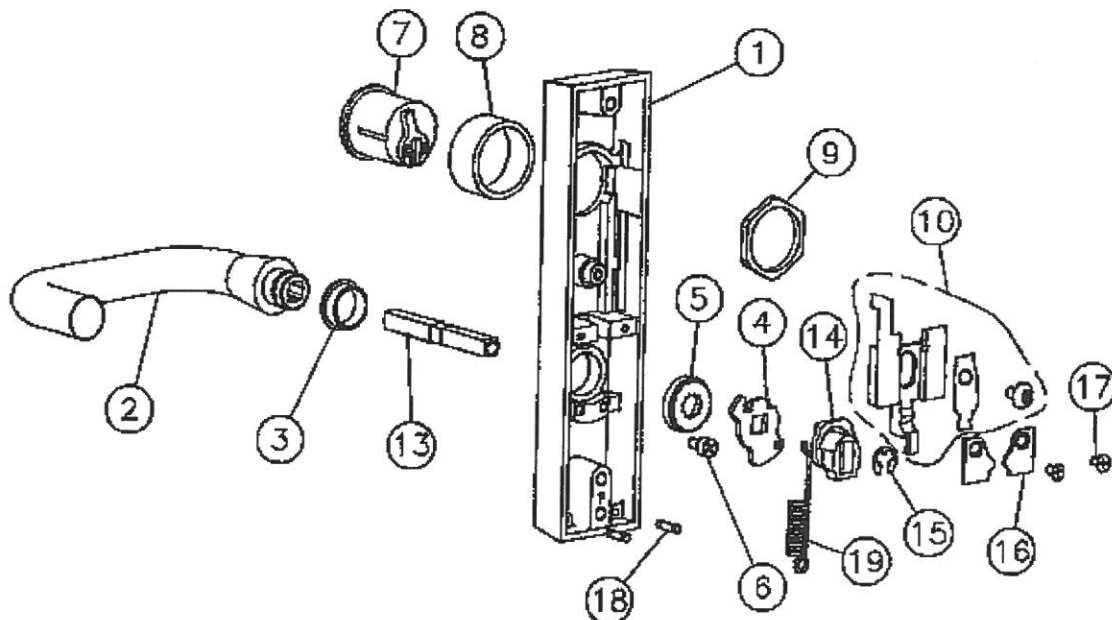
700 SERIES  
FREEWHEELING  
ET  
743

## Parts List

Page No Rev  
700.13 E  
1/1/2002

ITEM	PART NO.	DESCRIPTION	QTY
1	—	CASE	1
2	—	LEVER HANDLE * ±	1
3	97-0477	BUSHING INSERT	1
4	97-0478	LOWER HUB PLATE	1
5	82-0184	CAP NUT	1
6	01-1182	CAP SCREW	1
7	—	CYLINDER * ∅	1
8	97-0350	COLLAR *	1
9	13-0180	CYLINDER NUT	1
10	607-3	LOCKING SLIDE REPLACEMENT KIT (743)	1
13	97-3092	SPINDLE ASSEMBLY (1 3/4" DOOR)	1
	97-3093	SPINDLE ASSEMBLY (2" DOOR)	
	97-3094	SPINDLE ASSEMBLY (2 1/4" DOOR)	
14	97-0479	SPINDLE LOCKING HUB	1
15	97-0527	RETAINING RING	1
16	97-0499	GUIDE	2
17	01-1154	MACHINE SCREW 5-32 x 1/4	2
18	01-4507	GROOV PIN	2
19	97-0425	HUB SPRING (ALL OTHER LEVERS)	1
	97-0566	HUB SPRING (J LEVER ONLY)	
	01-4451	THRU BOLT 1/4-20 x 2 3/8 (1 3/4 DOOR)	2
	01-4372	THRU BOLT 1/4-20 x 2 5/8 (2 DOOR)	
	01-4373	THRU BOLT 1/4-20 x 2 7/8 (2 1/4 DOOR)	

\* SPECIFY FINISH  
∅ SPECIFY #41 CYLINDER  
BY KEYING REQUIREMENTS  
± SPECIFY LEVER DESIGN BY  
HAND  
NOTE: 607 KIT CONTAINS  
ALL PARTS NEEDED TO  
REPLACE LOCKING SLIDE.



# 80 series Parts List

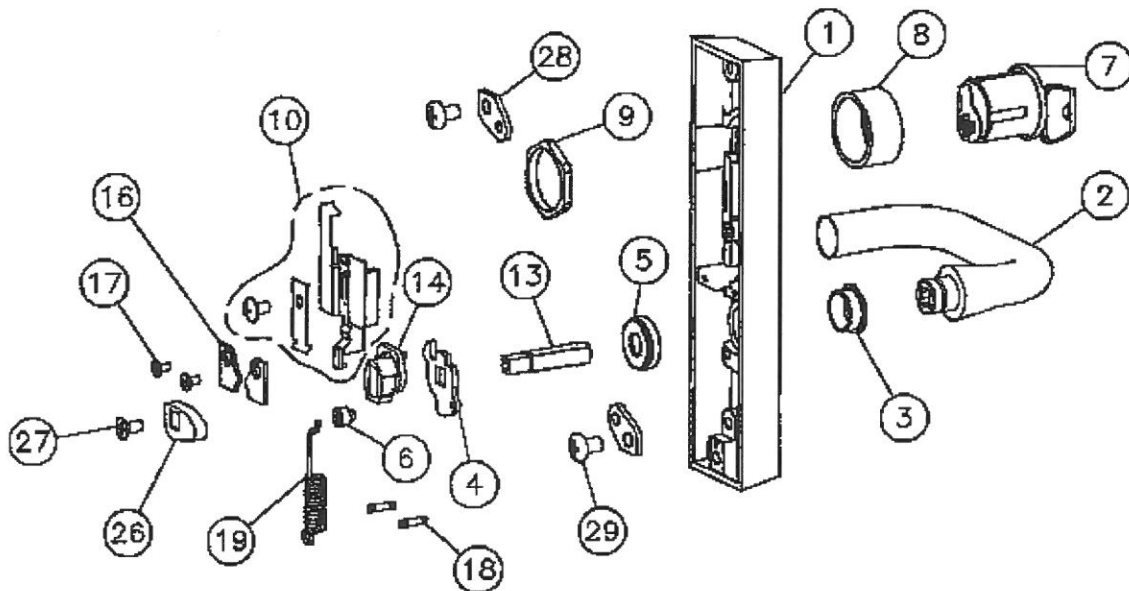
700 SERIES  
FREEWHEELING  
ET  
743-4

## Parts List

Page No Rev  
700.14 E  
1/1/2002

ITEM	PART NO.	DESCRIPTION	QTY
1	—	CASE	1
2	—	LEVER HANDLE * ±	1
3	97-0477	BUSHING INSERT	1
4	97-0478	LOWER HUB PLATE	1
5	82-0184	CAP NUT	1
6	01-1182	CAP SCREW	1
7	—	CYLINDER * $\phi$	1
8	97-0350	COLLAR *	1
9	13-0180	CYLINDER NUT	1
10	607-3	LOCKING SLIDE REPLACEMENT KIT (743)	1
13	97-3098	SPINDLE ASSEMBLY (1 3/4" DOOR)	1
	97-3099	SPINDLE ASSEMBLY (2" DOOR)	
	97-3100	SPINDLE ASSEMBLY (2 1/4" DOOR)	
14	97-0479	SPINDLE LOCKING HUB	1
16	97-0499	GUIDE	2
17	01-1154	MACHINE SCREW 6-32 x 1/4	2
18	01-4507	GROOV PIN	2
19	97-0425	HUB SPRING (ALL OTHER LEVERS)	1
	97-0566	HUB SPRING (J LEVER ONLY)	
26	68-0852	CAM	1
27	01-1027	MACHINE SCREW 10-24 x 3/8	1
28	68-0853	BRACKET	2
29	01-1478	MACHINE SCREW 1/4-20 x 3/8	2
	01-4451	THRU BOLT 1/4-20 x 2 3/8 (1 3/4 DOOR)	2
	01-4372	THRU BOLT 1/4-20 x 2 5/8 (2 DOOR)	
	01-4373	THRU BOLT 1/4-20 x 2 7/8 (2 1/4 DOOR)	

\* SPECIFY FINISH  
 $\phi$  SPECIFY #41 CYLINDER  
 BY KEYING REQUIREMENTS  
 ± SPECIFY LEVER DESIGN BY  
 HAND  
 NOTE: 607 KIT CONTAINS ALL  
 PARTS NEEDED TO REPLACE  
 LOCKING SLIDE



# 80 series Parts List

700 SERIES  
FREEWHEELING  
ET  
743-8

## Parts List

Page No 700.15  
Rev E  
1/1/2002

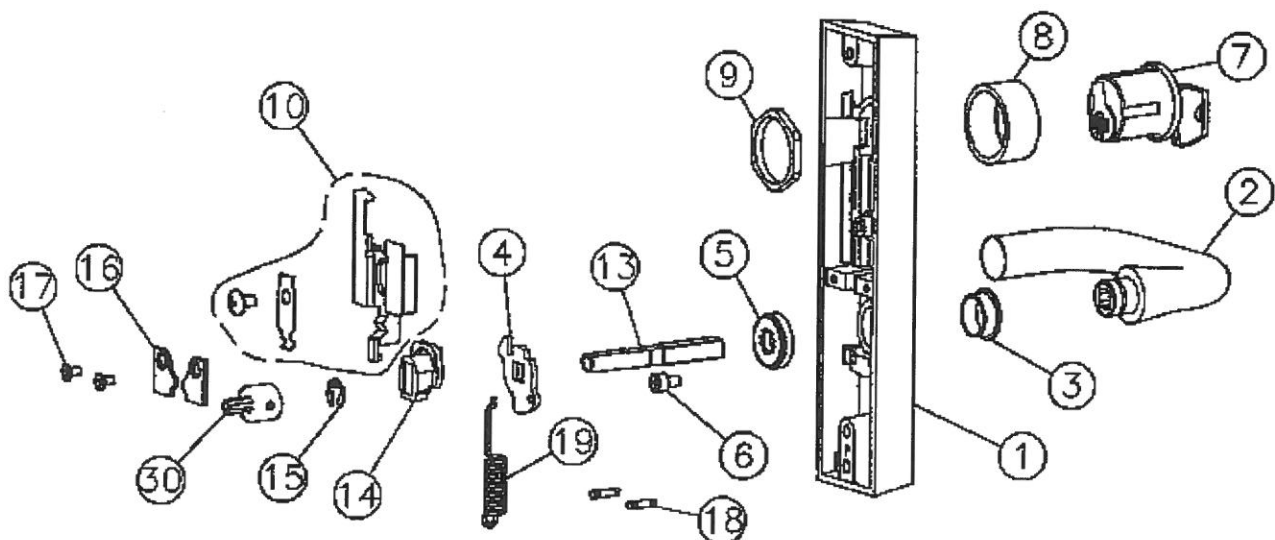
ITEM	PART NO.	DESCRIPTION	QTY
1	---	CASE	1
2	---	LEVER HANDLE * ±	1
3	97-0477	BUSHING INSERT	1
4	97-0478	LOWER HUB PLATE	1
5	82-0184	CAP NUT	1
6	01-1182	CAP SCREW	1
7	---	CYLINDER * φ	1
8	97-0350	COLLAR *	1
9	13-0180	CYLINDER NUT	1
10	607-3	LOCKING SLIDE REPLACEMENT KIT (743)	1
13	97-3092	SPINDLE ASSEMBLY (1 3/4" DOOR)	1
	97-3093	SPINDLE ASSEMBLY (2" DOOR)	
	97-3094	SPINDLE ASSEMBLY (2 1/4" DOOR)	
14	97-0479	SPINDLE LOCKING HUB	1
15	97-0527	RETAINING RING	1
16	97-0499	GUIDE	2
17	01-1154	MACHINE SCREW 6-32 x 1/4	2
18	01-4507	GROOV PIN	2
19	97-0425	HUB SPRING (ALL OTHER LEVERS)	1
	97-0566	HUB SPRING (J LEVER ONLY)	
30	68-3671	ADAPTER	1
	01-4451	THRU BOLT 1/4-20 x 2 3/8 (1 3/4 DOOR)	2
	01-4372	THRU BOLT 1/4-20 x 2 5/8 (2 DOOR)	
	01-4373	THRU BOLT 1/4-20 x 2 7/8 (2 1/4 DOOR)	

\* SPECIFY FINISH

φ SPECIFY #41 CYLINDER  
BY KEYING REQUIREMENTS

± SPECIFY LEVER DESIGN  
BY HAND

NOTE 607 KIT CONTAINS ALL  
PARTS NEEDED TO  
REPLACE LOCKING SLIDE



# 80 series Parts List

700 SERIES  
FREEWHEELING  
ET  
743-6

## Parts List

Page No Rev  
700.15-1 E  
1/1/2002

ITEM	PART NO.	DESCRIPTION	QTY
1	—	CASE	1
2	—	LEVER HANDLE * ±	1
3	97-0477	BUSHING INSERT	1
4	97-0478	LOWER HUB PLATE	1
5	82-0184	CAP NUT	1
6	01-1182	CAP SCREW	1
7	—	CYLINDER * ∅	1
8	97-0350	COLLAR *	1
9	13-0180	CYLINDER NUT	1
10	607-3	LOCKING SLIDE REPLACEMENT KIT (743)	1
13	97-3092	SPINDLE ASSEMBLY (1 3/4" DOOR)	1
14	97-0479	SPINDLE LOCKING HUB	1
15	97-0528	RETAINING RING	1
16	97-0499	GUIDE	2
17	01-1154	MACHINE SCREW 6-32 x 1/4	2
18	01-4507	GROOV PIN	2
19	97-0425	HUB SPRING (ALL OTHER LEVERS)	1
	97-0566	HUB SPRING (J LEVER ONLY)	
28	68-1254	BRACKET	1
29	01-1478	MACHINE SCREW 1/4-20 x 3/8	1
	01-4451	THRU BOLT 1/4-20 x 2 3/8 (1 3/4 DOOR)	2

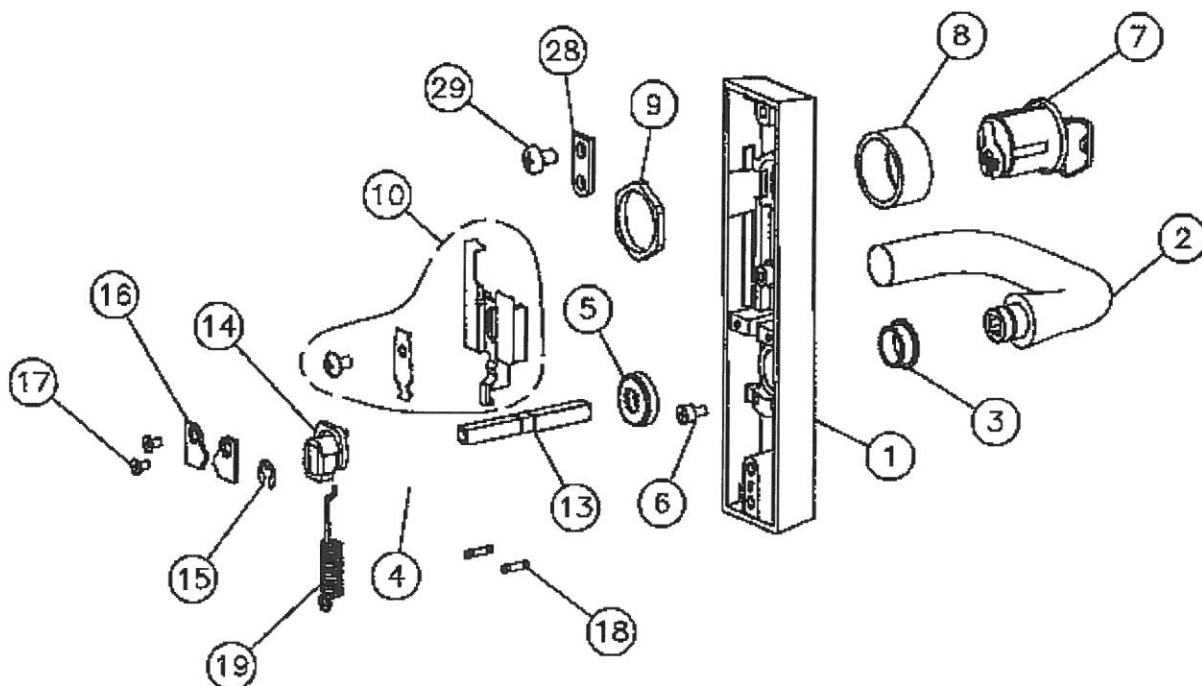
\* SPECIFY FINISH

∅ SPECIFY #41 CYLINDER  
BY KEYING REQUIREMENTS

± SPECIFY LEVER DESIGN BY  
HAND

NOTE: 700-6 ET CONTROL  
IS ONLY AVAILABLE FOR  
1-3/4 DOORS

NOTE: 607 KIT CONTAINS ALL  
PARTS NEEDED TO REPLACE  
LOCKING SLIDE



# 80 series Parts List

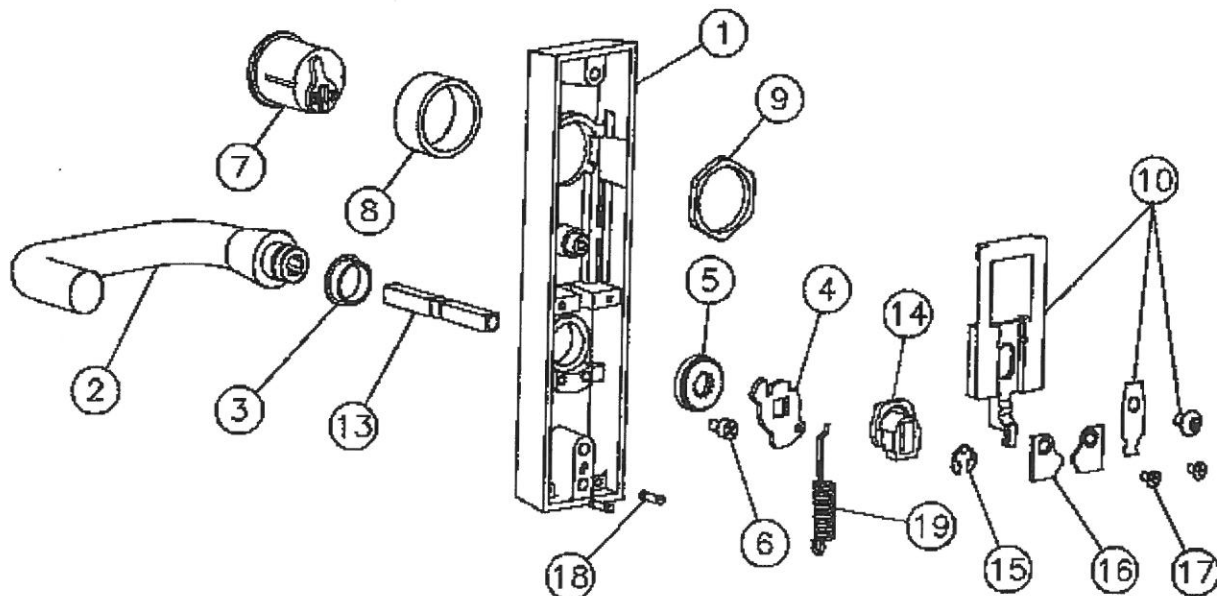
700 SERIES  
FREEWHEELING  
ET  
746

## Parts List

Page No Rev  
700.16 E  
1/1/2002

ITEM	PART NO.	DESCRIPTION	QTY
1	—	CASE	1
2	—	LEVER HANDLE * ±	1
3	97-0477	BUSHING INSERT	1
4	97-0478	LOWER HUB PLATE	1
5	82-0184	CAP NUT	1
6	01-1182	CAP SCREW	1
7	—	CYLINDER * $\phi$	1
8	97-0350	COLLAR *	1
9	13-0180	CYLINDER NUT	1
10	607-4	LOCKING SLIDE REPLACEMENT KIT (746)	1
13	97-3092	SPINDLE ASSEMBLY (1 3/4" DOOR)	1
	97-3093	SPINDLE ASSEMBLY (2" DOOR)	
	97-3094	SPINDLE ASSEMBLY (2 1/4" DOOR)	
14	97-0479	SPINDLE LOCKING HUB	1
15	97-0527	RETAINING RING	1
16	97-0499	GUIDE	2
17	01-1154	MACHINE SCREW 6-32 x 1/4	2
18	01-4507	GROOV PIN	2
19	97-0425	HUB SPRING (ALL OTHER LEVERS)	1
	97-0566	HUB SPRING (J LEVER ONLY)	
	01-4451	THRU BOLT 1/4-20 x 2 3/8 (1 3/4 DOOR)	2
	01-4372	THRU BOLT 1/4-20 x 2 5/8 (2 DOOR)	
	01-4373	THRU BOLT 1/4-20 x 2 7/8 (2 1/4 DOOR)	

\* SPECIFY FINISH  
 $\phi$  SPECIFY #41 CYLINDER  
 BY KEYING REQUIREMENTS  
 ± SPECIFY LEVER DESIGN BY  
 HAND  
 NOTE: 607 KIT CONTAINS  
 ALL PARTS NEEDED TO  
 REPLACE LOCKING SLIDE.



# 80 series Parts List

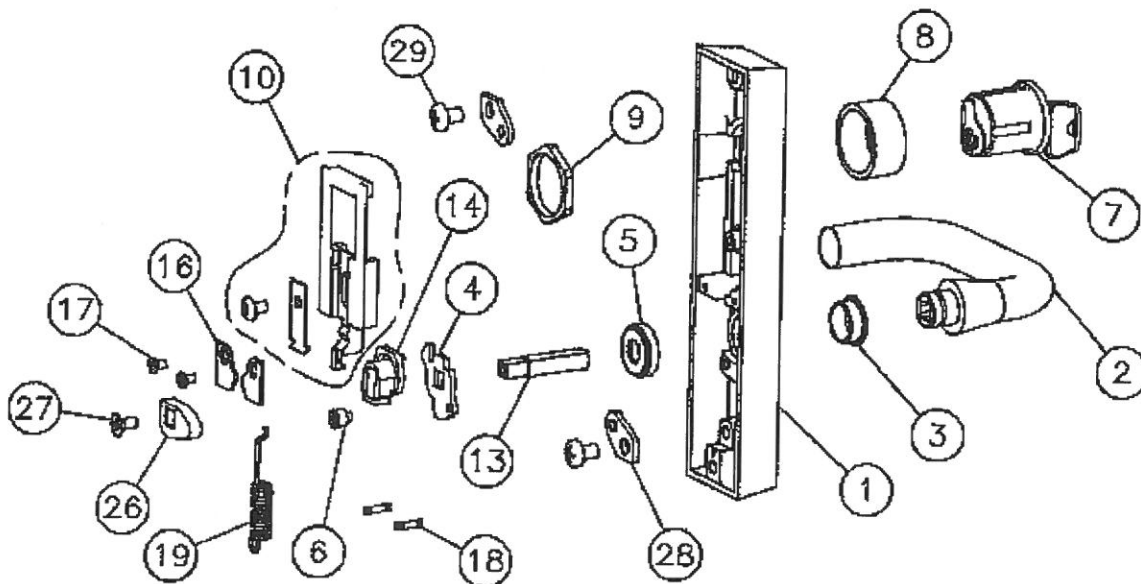
700 SERIES  
FREEWHEELING  
ET  
746-4

## Parts List

Page No Rev  
700.17 E  
1/1/2002

ITEM	PART NO.	DESCRIPTION	QTY
1	—	CASE	1
2	—	LEVER HANDLE * ±	1
3	97-0477	BUSHING INSERT	1
4	97-0478	LOWER HUB PLATE	1
5	82-0184	CAP NUT	1
6	01-1182	CAP SCREW	1
7	—	CYLINDER * Ø	1
8	97-0350	COLLAR *	1
9	13-0180	CYLINDER NUT	1
10	607-4	LOCKING SLIDE REPLACEMENT KIT (746)	1
13	97-3098	SPINDLE ASSEMBLY (1 3/4" DOOR)	1
	97-3099	SPINDLE ASSEMBLY (2" DOOR)	
	97-3100	SPINDLE ASSEMBLY (2 1/4" DOOR)	
14	97-0479	SPINDLE LOCKING HUB	1
16	97-0499	GUIDE	2
17	01-1154	MACHINE SCREW 6-32 x 1/4	2
18	01-4507	GROOV PIN	2
19	97-0425	HUB SPRING (ALL OTHER LEVERS)	1
	97-0566	HUB SPRING (J LEVR ONLY)	
26	68-0852	CAM	1
27	01-1027	MACHINE SCREW 10-24 x 3/8	1
28	68-0853	BRACKET	2
29	01-1478	MACHINE SCREW 1/4-20 x 3/8	2
	01-4451	THRU BOLT 1/4-20 x 2 3/8 (1 3/4 DOOR)	2
	01-4372	THRU BOLT 1/4-20 x 2 5/8 (2 DOOR)	
	01-4373	THRU BOLT 1/4-20 x 2 7/8 (2 1/4 DOOR)	

\* SPECIFY FINISH  
Ø SPECIFY #41 CYLINDER  
BY KEYING REQUIREMENTS  
± SPECIFY LEVER DESIGN  
BY HAND  
NOTE: 607 KIT CONTAINS  
ALL PARTS NEEDED TO  
REPLACE LOCKING SLIDE





# 80 series Parts List

700 SERIES  
FREEWHEELING  
ET  
746-6

## Parts List

Page No Rev  
700.17-1 E  
1/1/2002

ITEM	PART NO.	DESCRIPTION	QTY
1	—	CASE	1
2	—	LEVER HANDLE * ±	1
3	97-0477	BUSHING INSERT	1
4	97-0478	LOWER HUB PLATE	1
5	82-0184	CAP NUT	1
6	01-1182	CAP SCREW	1
7	—	CYLINDER * ∅	1
8	97-0350	COLLAR *	1
9	13-0180	CYLINDER NUT	1
10	607-5	LOCKING SLIDE REPLACEMENT KIT (746-6)	1
13	97-3092	SPINDLE ASSEMBLY (1 3/4" DOOR)	1
14	97-0479	SPINDLE LOCKING HUB	1
15	97-0528	RETAINING RING	1
16	97-0499	GUIDE	2
17	01-1154	MACHINE SCREW, 6-32 x 1/4	2
18	01-4507	GROOV PIN	2
19	97-0425	HUB SPRING (ALL OTHER LEVERS)	1
	97-0566	HUB SPRING (J LEVER ONLY)	
28	68-1254	BRACKET	1
29	01-1478	SCREW 1/4-20 x 3/8	1
	01-4451	THRU BOLT 1/4-20 x 2 3/8 (1 3/4 DOOR)	2

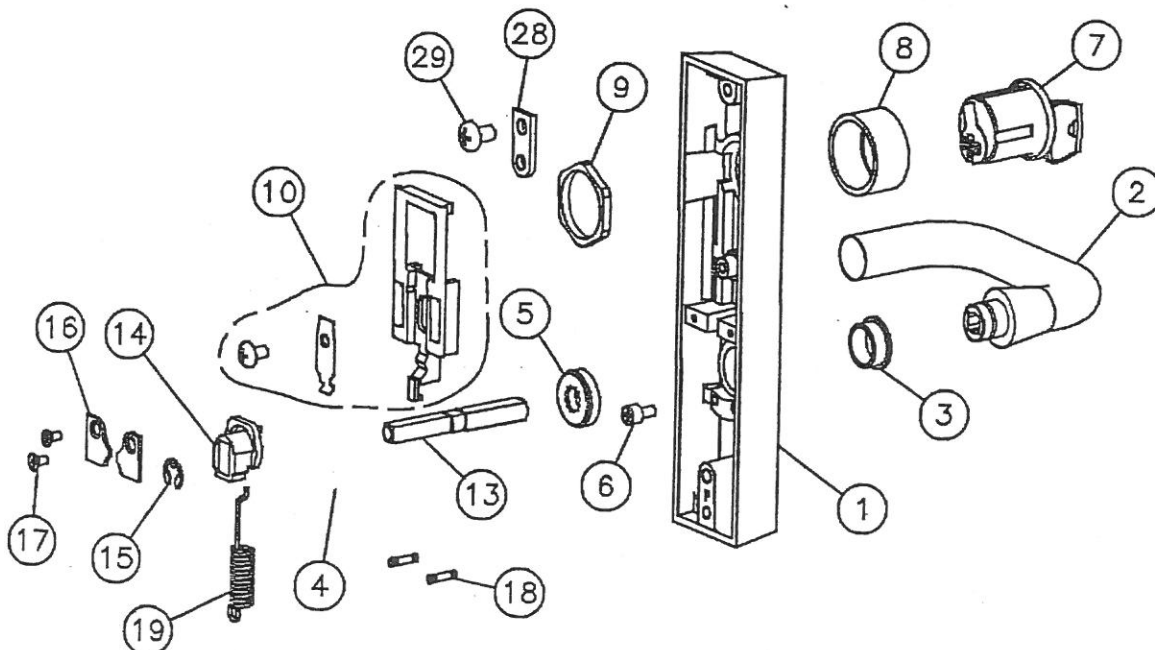
\* SPECIFY FINISH

∅ SPECIFY #41 CYLINDER  
BY KEYING REQUIREMENTS

± SPECIFY LEVER DESIGN BY  
HAND

NOTE: 700-6 ET CONTROL  
IS ONLY AVAILABLE FOR  
1-3/4 DOORS

NOTE: 607 KIT CONTAINS ALL  
PARTS NEEDED TO REPLACE  
LOCKING SLIDE



# 80 series Parts List

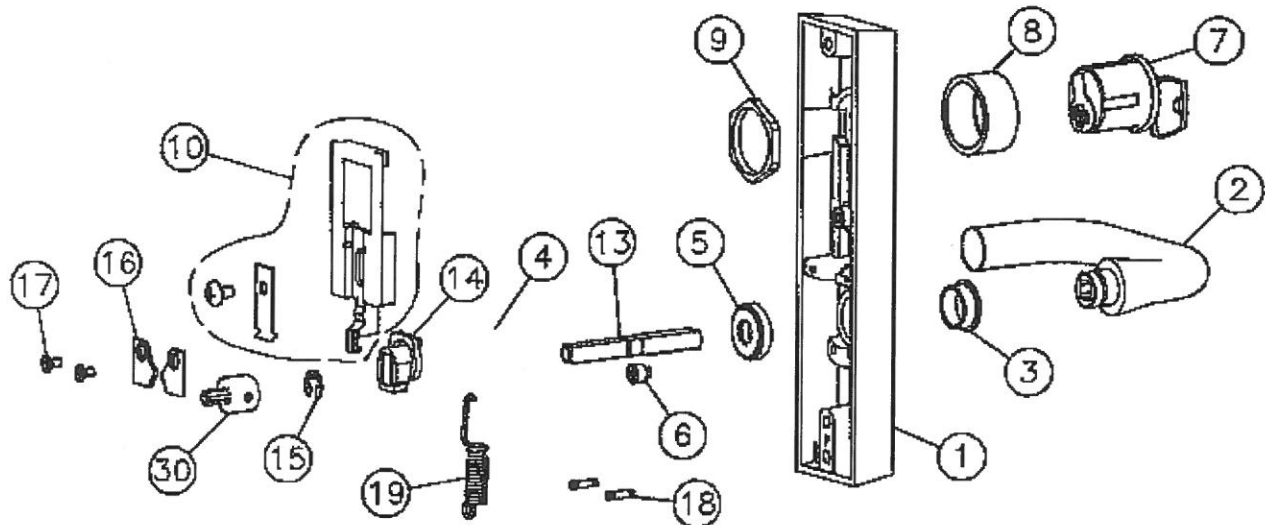
700 SERIES  
FREEWHEELING  
ET  
746-8

## Parts List

Page No Rev  
700.18 E  
5/29/2002

ITEM	PART NO.	DESCRIPTION	QTY
1	—	CASE	1
2	—	LEVER HANDLE * ±	1
3	97-0477	BUSHING INSERT	1
4	97-0478	LOWER HUB PLATE	1
5	82-0184	CAP NUT	1
6	01-1182	CAP SCREW	1
7	—	CYLINDER * $\phi$	1
8	97-0350	COLLAR *	1
9	13-0180	CYLINDER NUT	1
10	607-4	LOCKING SLIDE REPLACEMENT KIT (746)	1
13	97-3092	SPINDLE ASSEMBLY (1 3/4" DOOR)	1
	97-3093	SPINDLE ASSEMBLY (2" DOOR)	
	97-3094	SPINDLE ASSEMBLY (2 1/4" DOOR)	
14	97-0479	SPINDLE LOCKING HUB	1
15	97-0527	RETAINING RING	1
16	97-0499	GUIDE	2
17	01-1154	MACHINE SCREW 8-32 x 1/4	2
18	01-4507	GROOV PIN	2
19	97-0425	HUB SPRING (ALL OTHER LEVERS)	1
	97-0566	HUB SPRING (J LEVER ONLY)	
30	68-3871	ADAPTER	1
	01-4451	THRU BOLT 1/4-20 x 2 3/8 (1 3/4 DOOR)	2
	01-4372	THRU BOLT 1/4-20 x 2 5/8 (2 DOOR)	
	01-4373	THRU BOLT 1/4-20 x 2 7/8 (2 1/4 DOOR)	

\* SPECIFY FINISH  
 $\phi$  SPECIFY #41 CYLINDER  
 BY KEYING REQUIREMENTS  
 ± SPECIFY LEVER DESIGN BY  
 HAND  
 NOTE: 607 KIT CONTAINS ALL  
 PARTS NEEDED TO REPLACE  
 LOCKING SLIDE



80 series  
Parts List

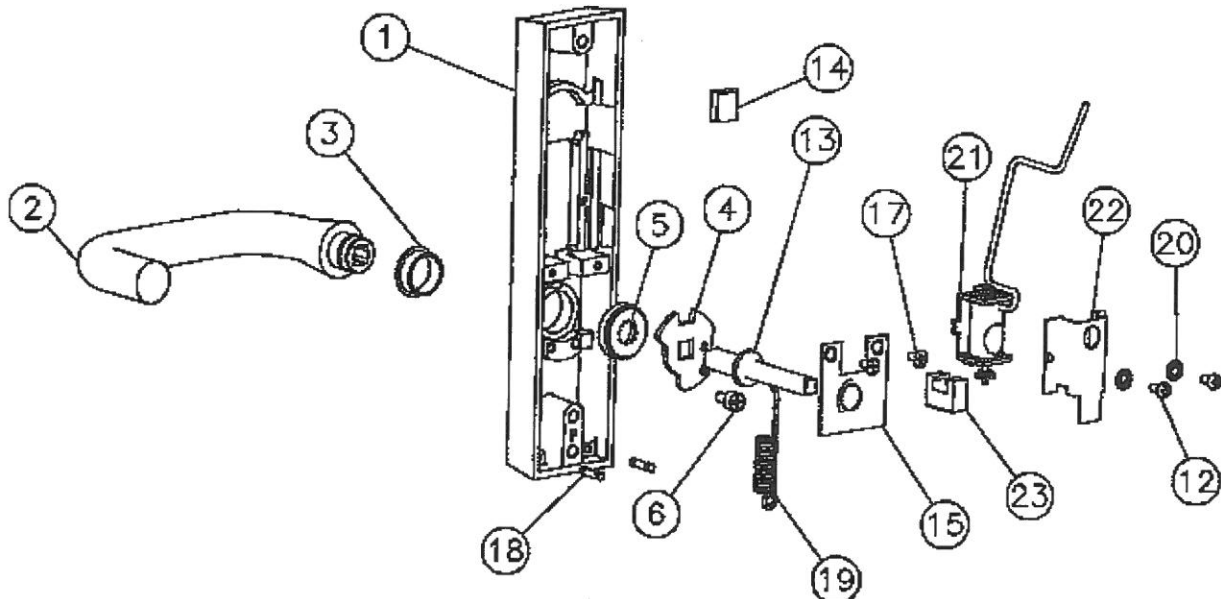
700 SERIES  
ET LEVER  
CONTROL  
773 & 774

Parts List

Page No 700.19  
Rev E  
1/1/2002

ITEM	PART NO.	DESCRIPTION	QTY
1	—	CASE	1
2	—	LEVER HANDLE * ±	1
3	97-0477	BUSHING INSERT	1
4	97-0528	LOWER HUB PLATE	1
5	82-0184	CAP NUT	1
6	01-1182	CAP SCREW	1
12	01-3583	MACHINE SCREW 5-40 x 1/4	2
13	97-0549	SPINDLE (1 3/4" DOOR)	1
	97-0550	SPINDLE (2" DOOR)	
	97-0551	SPINDLE (2 1/4" DOOR)	
14	01-0150	WIRE CLIP	1
15	68-1402	RETAINING PLATE (ELECTRICAL)	1
17	01-1154	MACHINE SCREW #8-32 x 1/4"	2
18	01-4507	GROOV PIN	2
19	97-0425	HUB SPRING (ALL OTHER LEVERS)	1
	97-0566	HUB SPRING (J LEVER ONLY)	
20	01-0868	LOCK WASHER	2
21	97-2865	SOLENOID ASSEMBLY (773)	1
	97-2866	SOLENOID ASSEMBLY (774)	
22	97-0328	SOLENOID COVER	1
23	97-0329	LOCKING TAIL	1
	01-4451	THRU BOLT 1/4-20 x 2 3/8 (1 3/4 DOOR)	2
	01-4372	THRU BOLT 1/4-20 x 2 5/8 (2 DOOR)	
	01-4373	THRU BOLT 1/4-20 x 2 7/8 (2 1/4 DOOR)	

\* SPECIFY FINISH  
± SPECIFY LEVER DESIGN  
BY HAND



# 80 series Parts List

700 SERIES  
ET LEVER  
CONTROL  
773-4 & 774-4

## Parts List

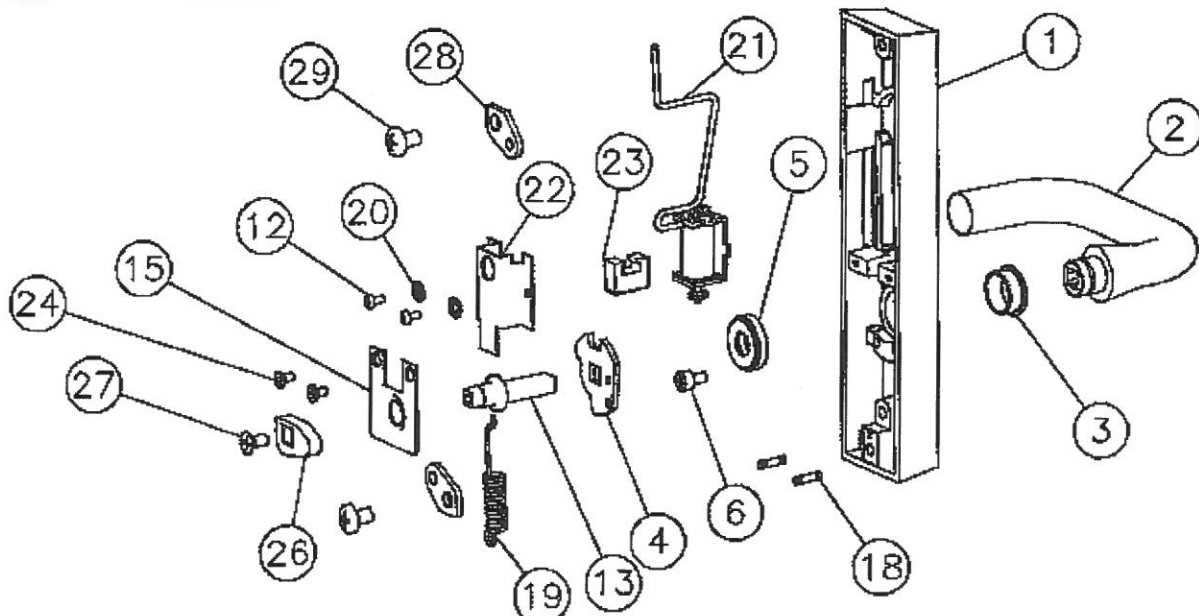
Page No Rev  
700.20 E  
1/1/2002

ITEM	PART NO.	DESCRIPTION	QTY
1	—	CASE	1
2	—	LEVER HANDLE * ±	1
3	97-0477	BUSHING INSERT	1
4	97-0528	LOWER HUB PLATE	1
5	82-0184	CAP NUT	1
6	01-1182	CAP SCREW	1
12	01-3563	MACHINE SCREW 5-40 x 1/4	2
13	730-4	RETROFIT KIT (1 3/4 DOOR)	1
	730-5	RETROFIT KIT (2 DOOR)	
	730-6	RETROFIT KIT (2 1/4 DOOR)	
15	68-1402	RETAINING PLATE (ELECTRICAL)	1
18	01-4507	GROOV PIN	2
19	97-0425	HUB SPRING (ALL OTHER LEVERS)	1
	97-0566	HUB SPRING (J LEVER ONLY)	
20	01-0868	LOCK WASHER	2
21	97-2865	SOLENOID ASSEMBLY (773)	1
	97-2866	SOLENOID ASSEMBLY (774)	
22	97-0328	SOLENOID COVER	1
23	97-0329	LOCKING TAIL	1
24	01-1154	MACHINE SCREW #6-24 x 1/4"	2
26	68-0852	CAM	1
27	01-1027	MACHINE SCREW 10-24 x 3/8	1
28	68-0853	BRACKET	2
29	01-1478	MACHINE SCREW 1/4-20 x 3/8	2
	01-4451	THRU BOLT 1/4-20 x 2 3/8 (1 3/4 DOOR)	2
	01-4372	THRU BOLT 1/4-20 x 2 5/8 (2 DOOR)	
	01-4373	THRU BOLT 1/4-20 x 2 7/8 (2 1/4 DOOR)	

\* SPECIFY FINISH

± SPECIFY LEVER DESIGN  
BY HAND

NOTE: 730 KIT INCLUDES  
ALL PARTS NEEDED TO  
REPLACE SPINDLE  
AND APPROPRIATE THRU  
BOLT KIT.



# 80 series Parts List

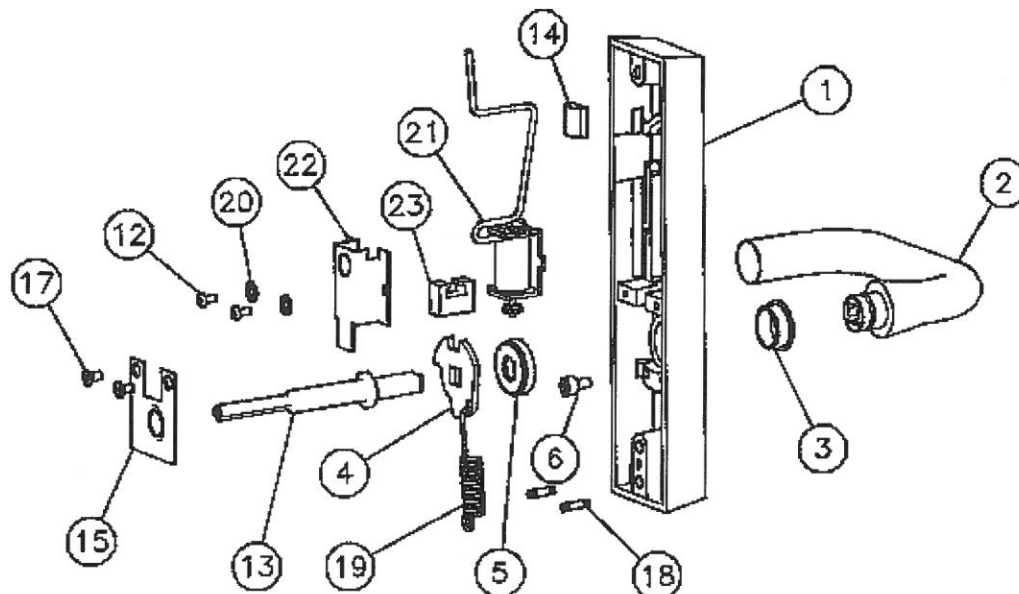
700 SERIES  
ET LEVER  
CONTROL  
773-8 & 774-8

## Parts List

Page No 700.21  
Rev D  
2/4/2000

ITEM	PART NO.	DESCRIPTION	QTY
1	---	CASE	1
2	---	LEVER HANDLE + ±	1
3	97-0477	BUSHING INSERT	1
4	97-0480	LOWER HUB PLATE	1
5	82-0184	CAP NUT	1
6	01-1182	CAP SCREW	1
12	01-3563	MACHINE SCREW 5-40 x 1/4	2
13	730-7	SPINDLE KIT (1 3/4" DOOR)	1
	730-8	SPINDLE KIT (2" DOOR)	
	730-9	SPINDLE KIT (2 1/4" DOOR)	
14	01-0150	WIRE CLIP	1
15	97-0527	RETAINING PLATE	1
17	01-1154	MACHINE SCREW 6-32 x 1/4	2
18	01-4507	GROOV PIN	2
19	97-0425	HUB SPRING (ALL OTHER LEVERS)	1
	97-0566	HUB SPRING (J LEVER ONLY)	
20	01-0868	LOCK WASHER	2
21	97-2865	SOLENOID ASSEMBLY (773-5 & 773-8)	1
	97-2866	SOLENOID ASSEMBLY (774-5 & 774-8)	
22	97-0328	SOLENOID COVER	1
23	97-0329	LOCKING TAIL	1
	01-4451	THRU BOLT 1/4-20 x 2 3/8 (1 3/4 DOOR)	2
	01-4372	THRU BOLT 1/4-20 x 2 5/8 (2 DOOR)	
	01-4373	THRU BOLT 1/4-20 x 2 7/8 (2 1/4 DOOR)	

\* SPECIFY FINISH  
± SPECIFY LEVER DESIGN  
BY HAND  
NOTE: 730 KIT INCLUDES  
ALL PARTS NEEDED TO  
REPLACE SPINDLE AND  
THRUBOLTS FOR SPECIFIED  
DOOR THICKNESS



# 80 series Parts List

700 SERIES  
ET LEVER  
CONTROL  
773-6 & 774-6

## Parts List

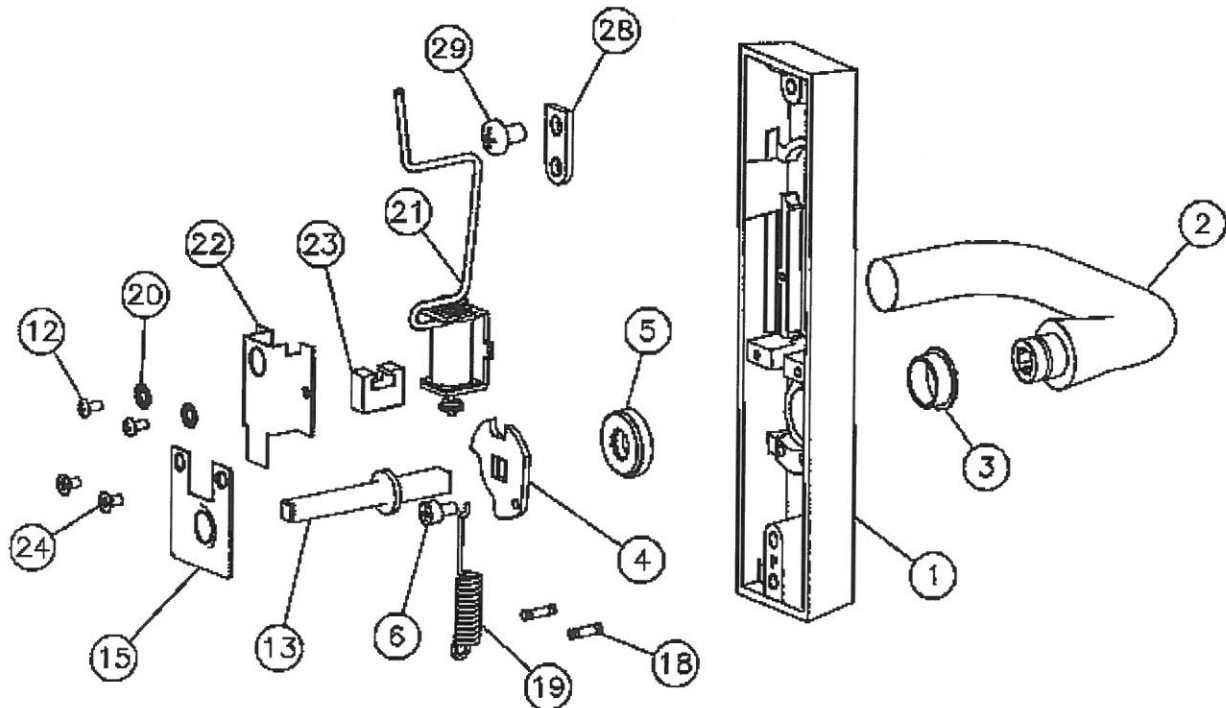
Page No Rev  
700.21-1 D  
1/1/2002

ITEM	PART NO.	DESCRIPTION	QTY
1	—	CASE	1
2	—	LEVER HANDLE * ±	1
3	97-0477	BUSHING INSERT	1
4	97-0480	HUB PLATE	1
5	82-0184	CAP NUT	1
6	01-1182	CAP SCREW	1
12	01-3563	MACHINE SCREW 5-40 x 1/4	2
13	97-0549	SPINDLE (1 3/4" DOOR)	1
15	68-1402	RETAINING PLATE (ELECTRICAL)	1
18	01-4507	GROOV PIN	2
19	97-0425	HUB SPRING (ALL OTHER LEVERS)	1
	97-0566	HUB SPRING (J LEVERS ONLY)	
20	01-0868	LOCK WASHER	2
21	97-2865	SOLENOID ASSEMBLY (773)	1
	97-2866	SOLENOID ASSEMBLY (774)	
22	97-0328	SOLENOID COVER	1
23	01-0329	LOCKING TAIL	1
24	01-1154	MACHINE SCREW 6-32 x 1/4	2
28	68-1254	BRACKET	1
29	01-1478	SCREW 1/4-20 x 3/8	1
	01-4451	THRU BOLT 1/4-20 x 2 3/8 (1 3/4 DOOR)	2

\* SPECIFY FINISH

± SPECIFY LEVER DESIGN  
BY HAND

NOTE: 700-6 ET CONTROL  
IS ONLY AVAILABLE  
FOR 1 3/4 DOORS



# 80 series Parts List

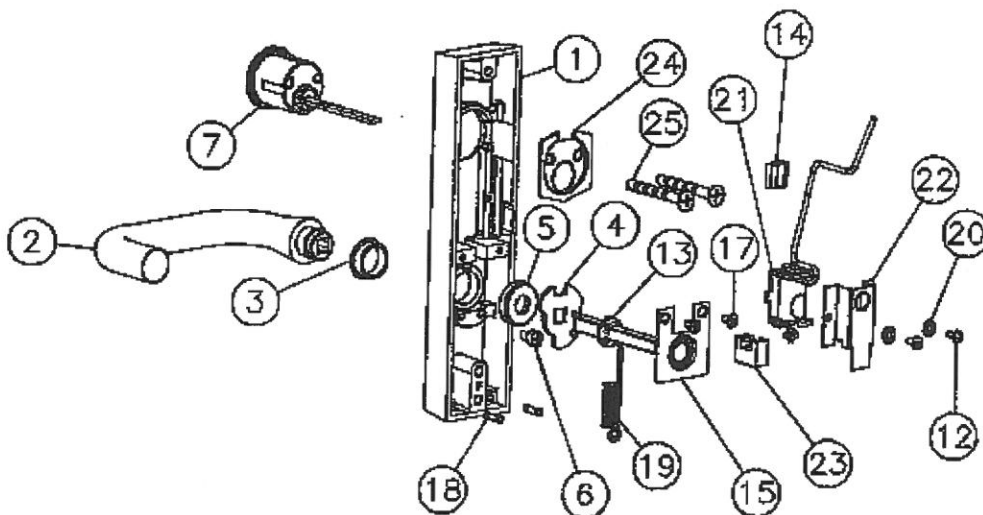
700 SERIES  
ET LEVER  
CONTROL  
775 & 776

## Parts List

Page No Rev  
700.22 E  
1/1/2002

ITEM	PART NO.	DESCRIPTION	QTY
1	—	CASE *	1
2	—	LEVER HANDLE * ±	1
3	97-0477	BUSHING INSERT	1
4	97-0528	LOWER HUB PLATE	1
5	82-0184	CAP NUT	1
6	01-1182	CAP SCREW	1
7	—	CYLINDER * φ	1
12	01-3563	MACHINE SCREW 5-40 x 1/4	2
13	97-0549	SPINDLE (1 3/4" DOOR)	1
	97-0550	SPINDLE (2" DOOR)	
	97-0551	SPINDLE (2 1/4" DOOR)	
14	01-0150	WIRE CLIP	1
15	68-1402	RETAINING PLATE (ELECTRICAL)	1
17	01-1154	MACHINE SCREW #6-32 x 1/4"	2
18	01-4507	GROOV PIN	2
19	97-0425	HUB SPRING (ALL OTHER LEVERS)	1
	97-0566	HUB SPRING (J LEVER ONLY)	
20	01-0868	LOCK WASHER	1
21	97-2865	SOLENOID ASSEMBLY (775)	1
	97-2866	SOLENOID ASSEMBLY (776)	
22	97-0328	SOLENIOD COVER	1
23	97-0329	LOCKING TAIL	1
24	13-0086	BACKPLATE	1
25	13-0074	CONNECTING SCREW	2
	13-0075	CONNECTING SCREW (2 1/2 DOOR AND OVER)	
	01-4451	THRU BOLT 1/4-20 x 2 3/8 (1 3/4 DOOR)	2
	01-4372	THRU BOLT 1/4-20 x 2 5/8 (2 DOOR)	
	01-4373	THRU BOLT 1/4-20 x 2 7/8 (2 1/4 DOOR)	

\* SPECIFY FINISH  
φ SPECIFY #34 CYLINDER  
BY KEYING  
REQUIREMENTS  
± SPECIFY LEVER DESIGN  
BY HAND



# 80 series Parts List

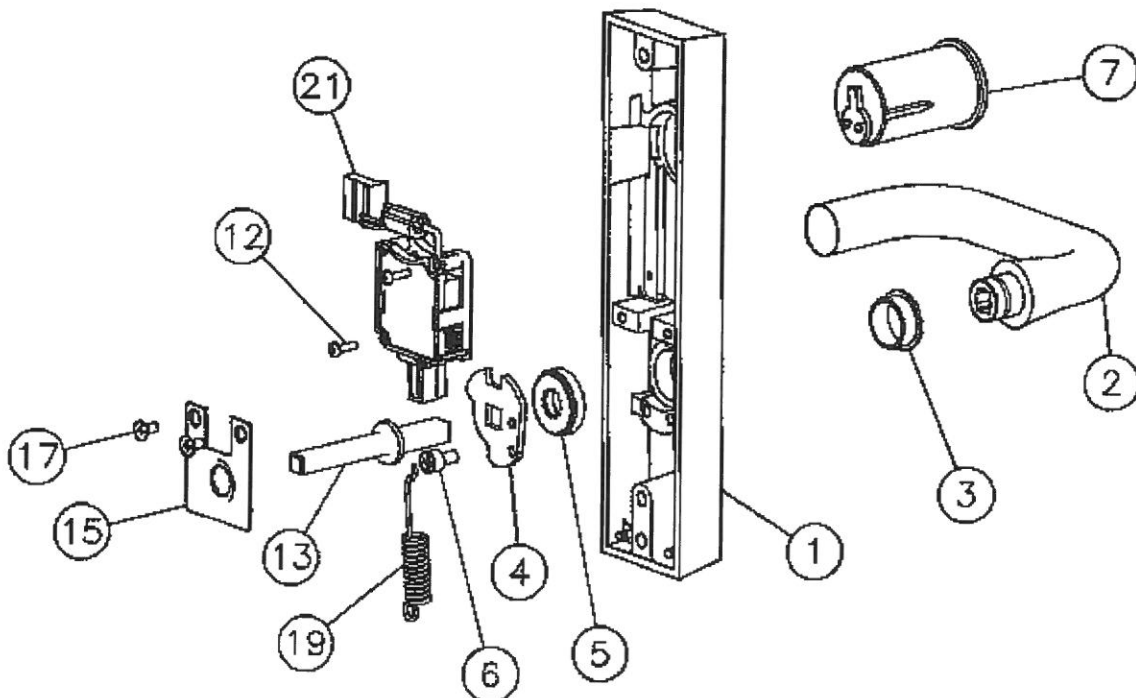
700 SERIES  
ET LEVER  
CONTROL  
777

## Parts List

Page No 700.23  
Rev F  
12/31/2002

ITEM	PART NO.	DESCRIPTION	QTY
1	—	CASE *	1
2	—	LEVER HANDLE * ±	1
3	97-0477	BUSHING INSERT	1
4	97-0528	HUB PLATE	1
5	82-0184	CAP NUT	1
6	01-1182	CAP SCREW	1
7	—	CYLINDER * ø	1
12	01-4540	MACHINE SCREW 3-48 x 5/8"	2
13	97-0549	SPINDLE (1 3/4" DOOR)	1
	97-0550	SPINDLE (2" DOOR)	
	97-0551	SPINDLE (2 1/4" DOOR)	
15	68-1402	RETAINING PLATE (ELECTRICAL)	1
17	01-1154	MACHINE SCREW #6-32 x 1/4"	2
19	97-0425	HUB SPRING (ALL OTHER LEVERS)	1
	97-0566	HUB SPRING (J LEVER ONLY)	
21	52-2556	MOTOR & HOUSING ASSEMBLY	1
	01-4451	THRU BOLT 1/4-20 x 2 3/8 (1 3/4 DOOR)	2
	01-4372	THRU BOLT 1/4-20 x 2 5/8 (2 DOOR)	
	01-4373	THRU BOLT 1/4-20 x 2 7/8 (2 1/4 DOOR)	

\* SPECIFY FINISH  
ø SPECIFY #46 CYLINDER  
BY KEYING  
REQUIREMENTS  
± SPECIFY LEVER  
DESIGN BY HAND





# 80 series Parts List

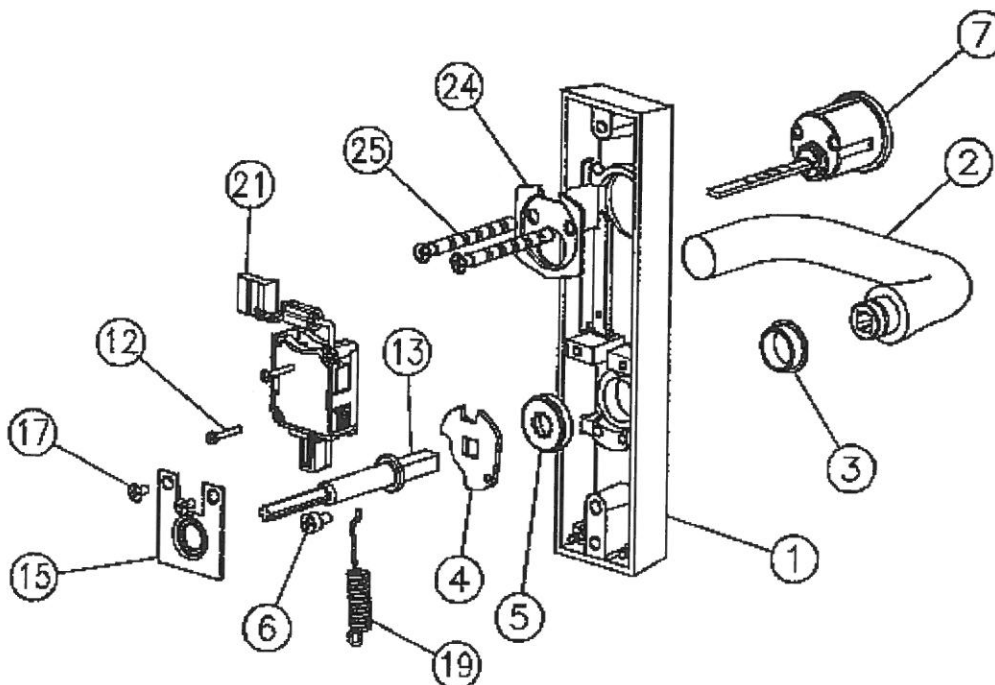
700 SERIES  
ET LEVER  
CONTROL  
777-B

## Parts List

Page No Rev  
700.23-1 B  
12/31/2002

ITEM	PART NO.	DESCRIPTION	QTY
1	—	CASE	1
2	—	LEVER HANDLE * ±	1
3	97-0477	BUSHING INSERT	1
4	97-0480	LOWER HUB PLATE	1
5	82-0184	CAP NUT	1
6	01-1182	CAP SCREW	1
7	—	CYLINDER ASSEMBLY * ∅	1
12	01-4540	MACHINE SCREW #3-48 x 5/8"	2
13	97-0541	SPINDLE	1
15	68-1402	RETAINING PLATE (ELECTRICAL)	1
17	01-1154	MACHINE SCREW #6-32 x 1/4"	2
19	97-0425	HUB SPRING (ALL OTHER LEVERS)	1
	97-0566	HUB SPRING (J LEVERS ONLY)	
21	52-2556	MOTOR & HOUSING ASSEMBLY	1
24	13-0086	BACKPLATE	1
25	13-0074	CONNECTING SCREW	2
	13-0075	CONNECTING SCREW (2 1/2 DOOR AND OVER)	
	01-4451	THRU BOLT 1/4-20 x 2 3/8 (1 3/4 DOOR)	2
	01-4372	THRU BOLT 1/4-20 x 2 5/8 (2 DOOR)	
	01-4373	THRU BOLT 1/4-20 x 2 7/8 (2 1/4 DOOR)	

\* SPECIFY FINISH  
∅ SPECIFY #34 CYLINDER  
BY KEYING REQUIREMENTS  
± SPECIFY LEVER DESIGN  
BY HAND



# 80 series Parts List

700 SERIES  
ET LEVER  
CONTROL  
77B

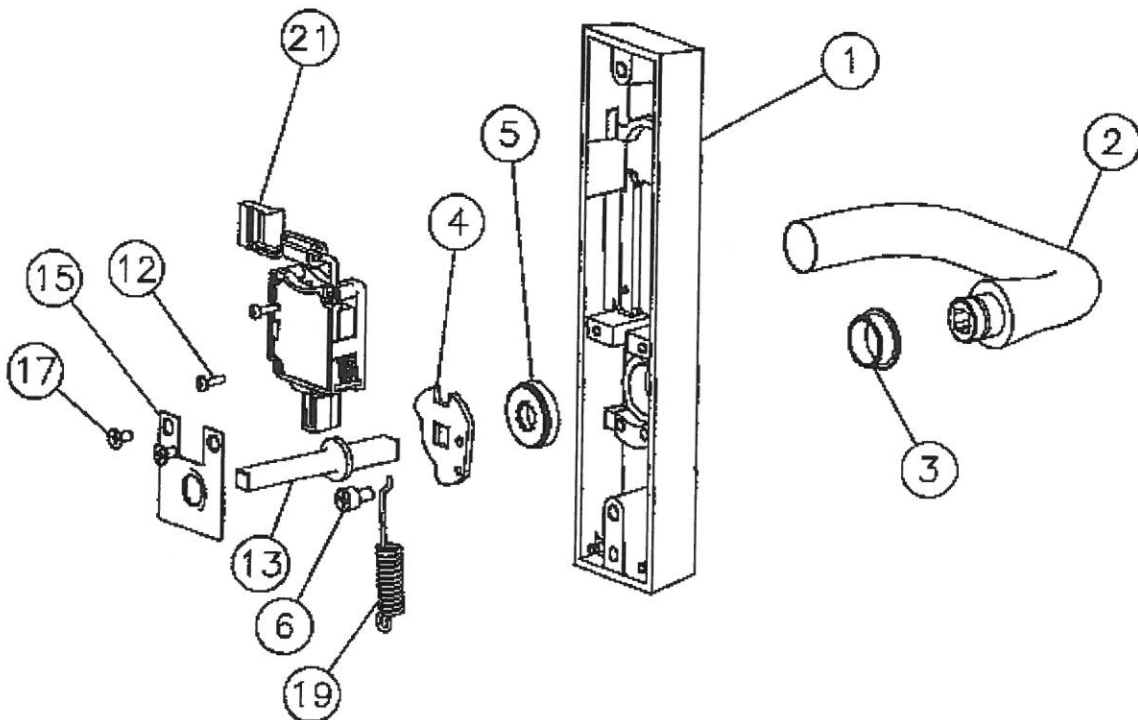
## Parts List

Page No Rev  
700.24 F  
12/31/2002

ITEM	PART NO.	DESCRIPTION	QTY
1	—	CASE *	1
2	—	LEVER HANDLE * ±	1
3	97-0477	BUSHING INSERT	1
4	97-0528	HUB PLATE	1
5	82-0184	CAP NUT	1
6	01-1182	CAP SCREW	1
12	01-4540	MACHINE SCREW 3-48 x 5/8"	2
13	97-0549	SPINDLE (1 3/4" DOOR)	1
	97-0550	SPINDLE (2" DOOR)	
	97-0551	SPINDLE (2 1/4" DOOR)	
15	68-1402	RETAINING PLATE (ELECTRICAL)	1
17	01-1154	MACHINE SCREW #6-32 x 1/4"	2
19	97-0425	HUB SPRING (ALL OTHER LEVERS)	1
	97-0566	HUB SPRING (J LEVER ONLY)	
21	52-2556	MOTOR & HOUSING ASSEMBLY	1
	01-4451	THRU BOLT 1/4-20 x 2 3/8 (1 3/4 DOOR)	2
	01-4372	THRU BOLT 1/4-20 x 2 5/8 (2 DOOR)	
	01-4373	THRU BOLT 1/4-20 x 2 7/8 (2 1/4 DOOR)	

\* SPECIFY FINISH

± SPECIFY LEVER DESIGN  
BY HAND



# 80 series Parts List

700 SERIES  
ET LEVER  
CONTROL  
778-8

## Parts List

Page No Rev  
700.26 C  
12/31/2002

ITEM	PART NO.	DESCRIPTION	QTY
1	—	CASE *	1
2	—	LEVER HANDLE * ±	1
3	97-0477	BUSHING INSERT	1
4	97-0480	LOWER HUB PLATE	1
5	82-0184	CAP NUT	1
6	01-1182	CAP SCREW	1
12	01-4540	MACHINE SCREW #3-48 x 5/8"	2
13	97-0541	SPINDLE	1
15	68-1402	RETAINING PLATE (ELECTRICAL)	1
17	01-1154	MACHINE SCREW #6-32 x 1/4"	2
19	97-0425	HUB SPRING (ALL OTHER LEVERS)	1
	97-0566	HUB SPRING (J LEVERS ONLY)	
21	52-2556	MOTOR & HOUSING ASSEMBLY	1
	01-4451	THRU BOLT 1/4-20 x 2 3/8 (1 3/4 DOOR)	2
	01-4372	THRU BOLT 1/4-20 x 2 5/8 (2 DOOR)	
	01-4373	THRU BOLT 1/4-20 x 2 7/8 (2 1/4 DOOR)	

\* SPECIFY FINISH

± SPECIFY LEVER DESIGN BY HAND

