

## The Premier Pemko Acoustic Automatic Door Bottom

### Superior performance and an enhanced design.

The Pemko STC411™ and STC4131™ automatic door bottoms are the latest design for high quality performance in acoustic control and sound attenuation. The newly designed spring assembly increases the pressure applied on the drop bar across the entire length of the automatic door bottom, maximizing seal performance.

The Pemko STC411 and PDB411 are acoustically equivalent, as determined by a third-party acoustic test lab. As such, the STC411 may be used in acoustic openings in place of the PDB411 without retesting. These automatic door bottoms are a great enhancement to the Pemko Acoustic Products portfolio.

When installed, the high quality, multi-finned seal of the Pemko STC-series automatic door bottoms conforms to slight irregularities in thresholds, sills, and most flooring materials. The seal not only provides superior acoustic performance, but also seals the opening against wind and debris to improve its overall energy efficiency.

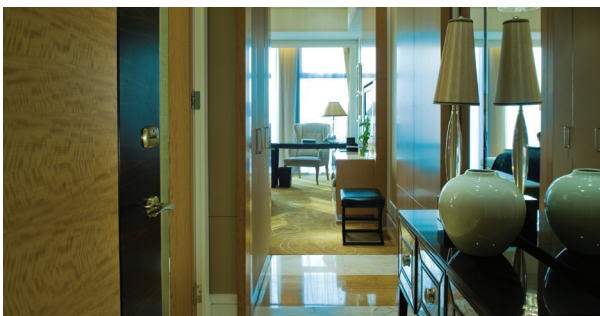
The expertly designed Pemko STC411™ full-mortise automatic door bottom uses the existing 411 door bottom casing enabling installation into the same mortise. This makes retrofit or new installations easy for installers who are already familiar with existing Pemko automatic door bottoms.

Features	Benefits
Multi-finned seal	Top of the line acoustic performance and energy efficient sealing
Newly designed mechanism	Improves the seal across the width of the opening and allows the gasket to conform to minor irregularities
Existing case design	Interchangeable with other Pemko products with the same case design
Meets ANSI Standard S12.60-2010	Helps earn LEED Credits
Meets UL10B, UL10C and UL1784	Fire and Smoke Tested

### Applications:

- Hospitality
- Healthcare
- Schools
- Office Buildings
- Theaters
- Auditoriums
- Libraries
- Multi-use facilities

Copyright © 2019,  
ASSA ABLOY Accessories and  
Door Controls Group, Inc.



The ASSA ABLOY Group is the global leader in access solutions. Every day, we help billions of people experience a more open world.

## Acoustic Solutions

Pemko Acoustic Automatic Door Bottoms are only one element of the acoustic solutions offered. A wide range of jamb gasketing, door bottoms and thresholds have been designed to assist with sound attenuation. In addition to these Pemko products, ASSA ABLOY can provide other elements of an overall solution for STC Rated doors and frames.

## Acoustic Automatic Door Bottoms

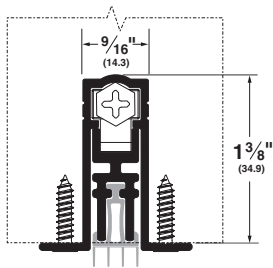
Part number	Width	Finishes
STC411_PK	12" to 72"	A - Mill Finish Aluminum with Black PemkoPrene® Gasket
STC4131_PK	12" to 72"	C - Clear Anodized Aluminum with Black PemkoPrene® Gasket D - Dark Bronze Anodized Aluminum with Black PemkoPrene® Gasket

To achieve the best acoustical results

- Min Drop:  $\frac{1}{8}$ " – Max Drop:  $\frac{3}{4}$ "  
Recommended Drop:  $\frac{3}{8}$ " to  $\frac{1}{2}$ "

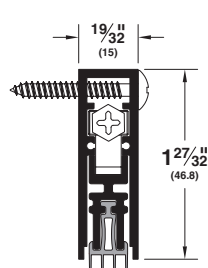
### Full-Mortise Application STC411™

AVAILABLE FINISHES: A  
REPLACEMENT INSERT: PK4111 (BL)



### Semi-Mortise or Face-Mount Application STC4131™

AVAILABLE FINISHES: C, D  
REPLACEMENT INSERT: PK4111 (BL)



## Technical Specifications:

**Material:** 6063-T6 Aircraft Aluminum

**Insert Material:** PemkoPrene®

**Fasteners:**

**STC411™:** Special #6-10 x  $\frac{5}{8}$ " x #4 bugle head wood screw

**STC4131™:** #8 x 1-1/4" sheet metal screw

**End Plate Kits:**

**STC411™:** Includes K435 kit

For doors narrower than 1-3/4", specify K411 end plate kit

**STC4131™:** K4133C for Clear Anodized  
K4133D for Dark Bronze Anodized

**Sound Rated:**

Tested to meet ASTM E 90-2009 Standard.

Tested to meet ANSI Standard

S12.60-2010, Acoustical Performance Criteria.

**Fire Rated:**

Meets UL10C Standard as a Category H and J gasket.

**Smoke Tested:**

Meets requirements of UBC 7-2 and UL 1784-01 Standards and is tested in accordance with NFPA 105 test method.

**Air Tested:**

Air infiltration tested in accordance with ASTM E283-04.

**ANSI/BHMA:**

Meets the requirements of ANSI/BHMA A156.22-2012 Door Gasketing Systems.



ASSA ABLOY is a member of the USGBC and CaGBC. U.S. Green Building Council logo is a trademark owned by the U.S. Green Building Council and is used with permission.

## ARCHITECTURAL DOOR ACCESSORIES™

Markar | McKinney | Pemko | Rockwood

ASSA ABLOY Opening Solutions  
Architectural Door Accessories  
5535 Distribution Drive, Memphis, TN 38141  
orders.pemko@assaabloy.com  
www.assaabloydooraccessories.us

Memphis, TN USA  
P: 800 824-3018  
F: 800 243-3656

Ventura, CA USA  
P: 800 283-9988  
F: 800 283-4050

Vaughan, ON CA  
P: 800.461.3007  
F: 800.461.8989