

## HG305 Hinge Guard

### Standard Features

#### Barrel Type Hinge

.187" diameter stainless steel pin (rod)  
 Flanged nylon bearings  
 Stainless steel end pins

#### Material

Heavy-duty 14 gauge stainless steel

#### Finishes

US32D Satin Stainless Steel (630)

#### Standards

Grade 1  
 ANSI/BHMA Standard A156.26

#### Mounting Hardware

Fasteners concealed when door is closed  
 Universal screw pack provided

#### Capacity

Supports weights up to 600lbs.  
 4'0" maximum door width

#### Standard Sizes

6'8", 7'0", 7'2", 8'0", 10'0"

#### Hole Pattern

Symmetrically templated

#### Handing

Not required for standard 7'0", 8'0" or 10'0". Handing required for 6'8" and 7'2" and for most optional features listed

#### Fire Rating

3 hours- hollow metal doors  
 90 minutes- hollow metal and composite  
 20 minutes- wood doors



Classified in accordance with UL10C for positive pressure



Fire-rated label

### Optional Features

#### Finish

US32 Bright Stainless Steel (629)  
 Scratch-Resistant Powder Coated Paint

#### Other Features

Custom lengths- specify in inches  
 Custom hole pattern  
 Dutch door hinges- suffix "DDP"  
 Hospital tips – suffix "HT"  
 Raised barrel – suffix "RB"  
 Special sheared leaf

#### Electrical Modifications

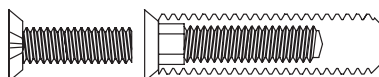
Adjustable monitoring switch - suffix "AMS"  
 Current Transfer Prep - suffix "CTP"  
 Electrical Transfer Access Prep - suffix "ETAP"

#### Fasteners

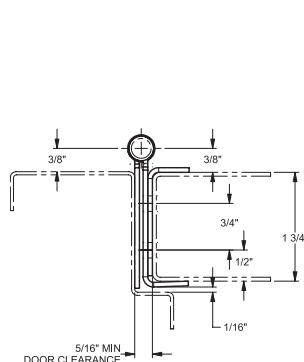
Adjust-A-Screw™ for correcting frame fit problems up to 3/8"

#### ElectroLynx™

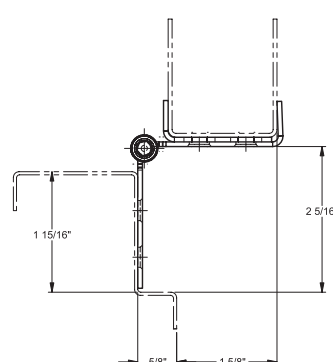
EL4 (4 wire), EL8 (8 wire), EL12 (12 wire)



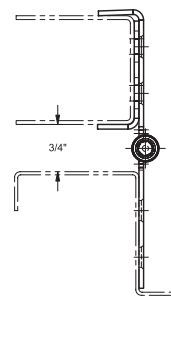
The integral hinge guard protects the door from dings and gouges from carts and gurneys while providing clean lines and aesthetic appearance. Our HG products also have fire ratings up to and including 3 hours. Not only that, but the wrap-around edge guard protects the door from unsightly dents and gouges and will deflect objects, preventing further damage.



Door Closed



Door Open 90°



Door Open 180°