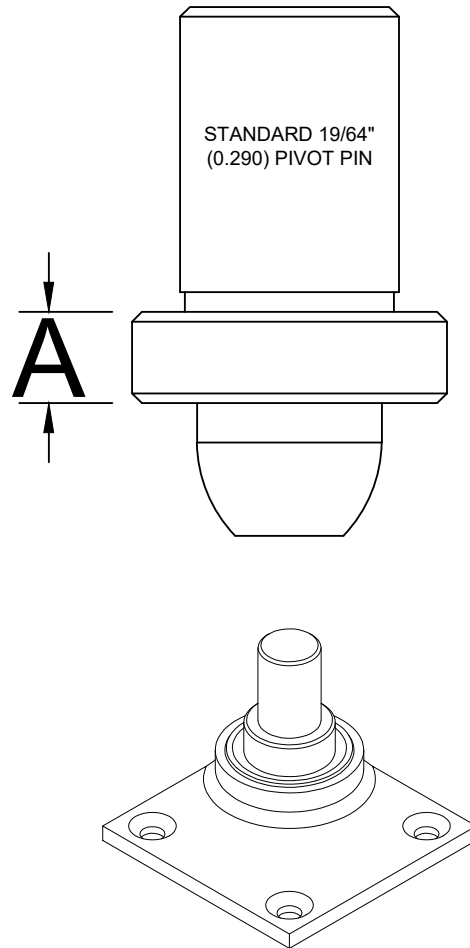


# 0147 EXTENSION-BOTTOM SPINDLE



0147

| ABH DWG # | EXT. LENGTH | A      |
|-----------|-------------|--------|
| ABH-3049  | 1/16"       | 0.345" |
| ABH-3033  | 1/8"        | 0.415" |
| ABH-3050  | 3/16"       | 0.477" |
| ABH-3034  | 1/4"        | 0.540" |
| ABH-3051  | 5/16"       | 0.602" |
| ABH-3035  | 3/8"        | 0.665" |
| ABH-3052  | 7/16"       | 0.727" |
| ABH-3036  | 1/2"        | 0.790" |
| ABH-3053  | 9/16"       | 0.852" |
| ABH-3037  | 5/8"        | 0.915" |
| ABH-3054  | 11/16"      | 0.977" |
| ABH-3038  | 3/4"        | 1.040" |
| ABH-3055  | 13/16"      | 1.102" |
| ABH-3039  | 7/8"        | 1.165" |
| ABH-3056  | 15/16"      | 1.227" |
| ABH-3040  | 1"          | 1.290" |
| ABH-3057  | 1-1/16"     | 1.352" |
| ABH-3058  | 1-1/8"      | 1.414" |
| ABH-3059  | 1-3/16"     | 1.476" |
| ABH-3060  | 1-1/4"      | 1.538" |
| ABH-3061  | 1-5/16"     | 1.600" |
| ABH-3062  | 1-3/8"      | 1.662" |
| ABH-3063  | 1-7/16"     | 1.724" |
| ABH-3064  | 1-1/2"      | 1.786" |
| ABH-3065  | 1-9/16"     | 1.848" |
| ABH-3066  | 1-5/8"      | 1.910" |
| ABH-3067  | 1-11/16"    | 1.972" |
| ABH-3068  | 1-3/4"      | 2.034" |
| ABH-3069  | 1-13/16"    | 2.096" |
| ABH-3070  | 1-7/8"      | 2.158" |
| ABH-3071  | 1-15/16"    | 2.220" |
| ABH-3072  | 2"          | 2.282" |